

4

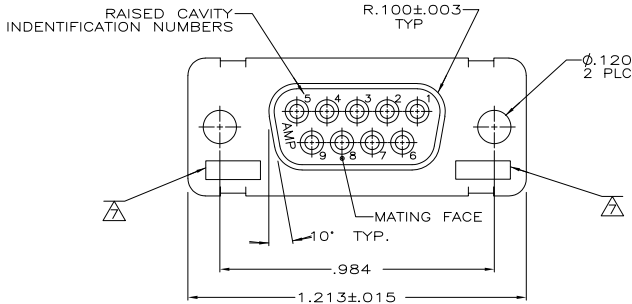
3

2

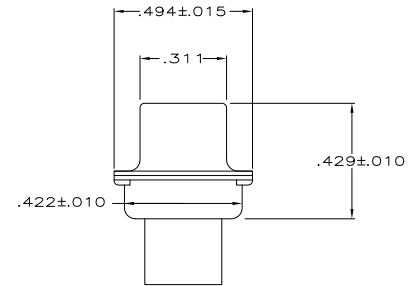
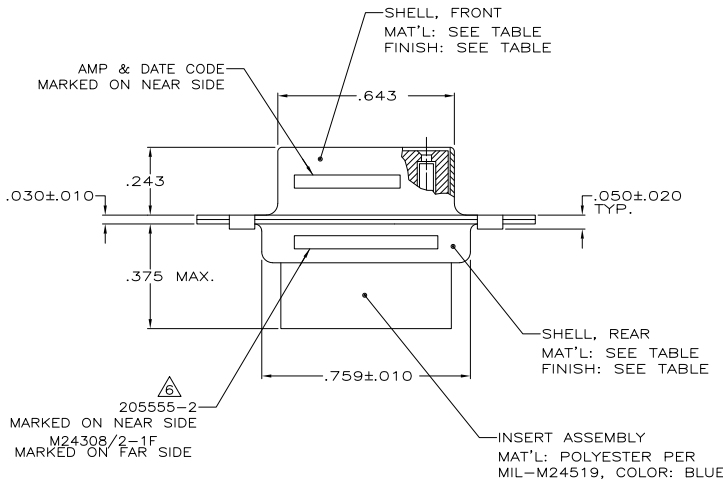
1

THIS DRAWING IS UNPUBLISHED. RELEASED FOR PUBLICATION. ALL RIGHTS RESERVED.

LOC		DIBT		REVISIONS		
DF	DO	P	LR	DESCRIPTION	DATE	BY
		P1		REVISED PER ECO-11-005030	11MAR11	RK HMR



1. THIS RCPT. IS DESIGNED TO CONFORM TO THE LATEST ISSUE OF MIL-C-24308
 2. MAX WIRE INSUL TO BE USED WITH THIS RCPT IS .068 DIA
 3. STAINLESS STEEL RETENTION CLIPS ARE INCLUDED IN INSERTS
 4. PACKAGE STAMPED M24308/2-281F
 5. THIS RCPT. WILL ACCEPT SIZE 20 SOCKET CONTACT M39029/63-368 OR ANY AMP HD-20 SOCKET CONTACT
- ⚠ AMP PART NO. STAMPED ON CONNECTOR REPRESENTS KIT NUMBER WITH CONTACTS
 ⚠ UL/CSA DESIGNATION STAMPED IN THIS AREA.
 ⚠ RESTRICTED ITAR DRAWING.
 ⚠ FINISH: PLATED BRIGHT TIN .000400 MIN THK PER ASTM-B-545 OVER COPPER PLATE .000050 MIN THK PER MIL-C-14550.



	⚠	STEEL, CLASS G	205161-5
	⚠	-	205161-4
SUPSC BY 205161-1	⚠	CADMIUM PER QQ-P-416	STEEL, CLASS G
SUPSD BY 207253-2	⚠	CADMIUM PER QQ-P-416	BRASS
	⚠	CADMIUM PER QQ-P-416	STEEL, CLASS G
		SHELL FINISH	SHELL MATERIAL
			PART NUMBER

DIMENSIONS:		OTHER DIMENSIONS:		APPROVALS:		TE Connectivity	
INCHES	0 PLC ± .005	1-12-05	C.C. THOMAS	1-12-05	D. MILLER	RCPT ASSY,AMPLITE, SIZE 1,9 POSN,SERIES 109	RESTRICTED TO
	1 PLC ± .005	1-12-05	D. MILLER	1-12-05	D. MILLER	SIZE CASE CODE DRAWING NO	
	2 PLC ± .005					A2 00779 C-205161	
	3 PLC ± .005					CUSTOMER DRAWING	
	4 PLC ± .005					SCALE 4:1 SHEET 1 of 1 REV P1	
	ANGLES ± .01°						
MATERIAL	SEE CALLOUTS						
FINISH	SEE CALLOUTS						