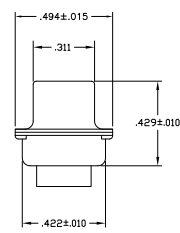
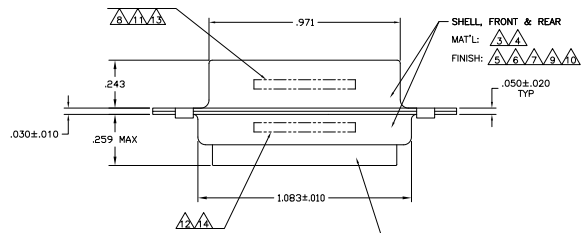
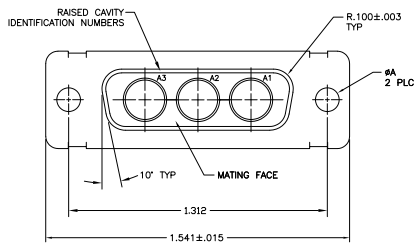


REV	DATE	DESCRIPTION	BY	CHK	APP
1	1-8-10	REV PER ECO 00-018296	U		CT RL



- THIS RECEPTACLE WILL MATE WITH ANY 3CS, SIZE 2 PLUG IN AMPLIMITE SERIES.
- THIS CONNECTOR ACCEPTS (3) POWER B, OR COAX SOCKET CONTACTS IN POSITIONS A1 THRU A3, PURCHASED SEPARATELY.
- STEEL PER ASTM-A-109.
- BRASS PER MIL-C-50 AND ASTM-B-36 UNS NO. C26000.
- FINISH: TIN PER ASTM-B-545 .000200 MIN THK OVER COPPER PER AMS2418 .000100-.000200 THK.
- GOLD PLATED PER MIL-G-45204 TYPE II, GRADE C, CLASS 1 OVER COPPER PER MIL-C-14550, CLASS IV.
- FINISH: PLATED CADMIUM PER QQ-P-416, TYPE II, CLASS 2, OVER COPPER PER MIL-C-14550, CLASS IV.
- IF CUSTOMER PART NUMBER DOES NOT FIT ON FRONT SHELL NEAR SIDE, THEN SPLIT BETWEEN FRONT AND REAR SHELL FAR SIDE.
- FINISH: TIN PER ASTM-B-545 .000200 MIN THK OVER COPPER PER AMS2418 .000100-.000200 THK.
- FINISH: ZINC PLATE PER ASTM-B-633 .000200-.000400 THK WITH SUPPLEMENTARY CHROMATE (Cr3+).
- MANUFACTURER'S NAME, BRAND OR LOGO AND DATE CODE MARKED ON FAR SIDE. CUSTOMER PART NO MARKED ON NEAR SIDE.
- MFG'S PART NUMBER MARKED ON FAR SIDE.
- MARK DATE CODE AND CUSTOMER PART NUMBER, FAR SIDE.
- MARK MFG PART NUMBER ON NEAR SIDE.

REMARKS	ØA	CUSTOMER PART NO.	PART NO.
			5-445705-4
		T5935-0103-005	445705-8
			445705-7
OBSOLETE		A010942-0042	445705-6
		B010942-0014	445705-5
			445705-4
		311P405-7S-B-15	445705-3
		311P405-7S-B-12	445705-2
			445705-1

THIS DRAWING IS A CONTROLLED DOCUMENT. TTI ELECTRONICS CORPORATION, Harrisburg, PA 17105-3608

RECEPTACLE ASSEMBLY AMPLIMITE 3C3 SIZE 2, SERIES 109, COAX MIX

SIZE: A1 00779 ©=445705

CUSTOMER DRAWING