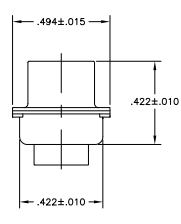
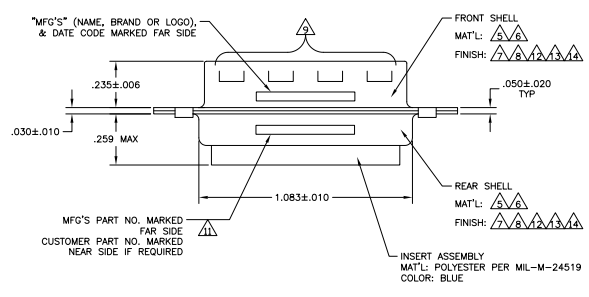
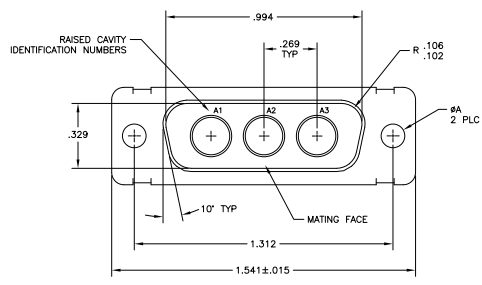


REV	DATE	DESCRIPTION	BY	CHK	APP
DF	DO				
F		REVISED PER ECO-08-012539			20-01-08 CT RL



- THIS PLUG WILL MATE WITH ANY 3C3, SIZE 2 RECEPTACLE IN AMPLIMITE SERIES.
- THIS PLUG IS DESIGNED TO CONFORM TO THE LATEST ISSUE OF MIL-C-24308.
- THIS CONNECTOR ACCEPTS (3) POWER 8, OR COAX PIN CONTACTS IN POSITIONS A1 THRU A3, PURCHASED SEPARATELY.
  - RAISED NUMBERS FOR IDENTIFICATION OF CIRCUIT HOLES.
  - STEEL PER ASTM-A-109.
  - BRASS PER MIL-C-50 AND ASTM-B-36 UNS NO. C26000.
  - CADMIUM PLATED PER QQ-P-416.
  - GOLD PLATED PER MIL-G-45204 TYPE II, GRADE C, CLASS 1 OVER COPPER PER MIL-C-14550, CLASS IV.
  - GROUNDING INDENTS FOR 448153-4 & 5-448153-4 ONLY.
  - "MFG'S" (NAME, BRAND OR LOGO) AND DATE CODE INK STAMPED ON FRONT SHELL, FAR SIDE. MFG'S PART NUMBER INK STAMPED ON REAR SHELL, FAR SIDE. FAR SIDE REFERS TO WIDE SIDE OF KEYSTONE.
  - CUSTOMER PART NUMBER MAY BE SPLIT BETWEEN FRONT AND REAR SHELL, NEAR SIDE.
  - FINISH: TIN PER ASTM-B-545 .000200 MIN THK OVER COPPER PER AMS2418 .000100-.000200 THK.
  - FINISH: TIN PER ASTM-B-545 .000200 MIN THK OVER COPPER PER AMS2418 .000100-.000200 THK.
  - FINISH: ZINC PLATE PER ASTM-B-633 .000200-.000400 THK WITH SUPPLEMENTARY CHROMATE (C3+).

	.120 [3.05]	T5935-0103-002	448153-7
	.120 [3.05]	-	5-448153-4
	.120 [3.05]	-	5-448153-1
	.120 [3.05]	B010942-0013	448153-5
	.120 [3.05]	-	448153-4
	.154 [3.91]	311P405-7P-B-15	448153-3
	.120 [3.05]	311P405-7P-B-12	448153-2
	.120 [3.05]	-	448153-1

THIS DRAWING IS A CONTROLLED DOCUMENT.		REV	DATE	DESCRIPTION	BY	CHK	APP
DESIGNED	BY						
DRAWN	BY						
CHECKED	BY						
APPROVED	BY						
CUSTOMER DRAWING		A1	00779	448153			