

4

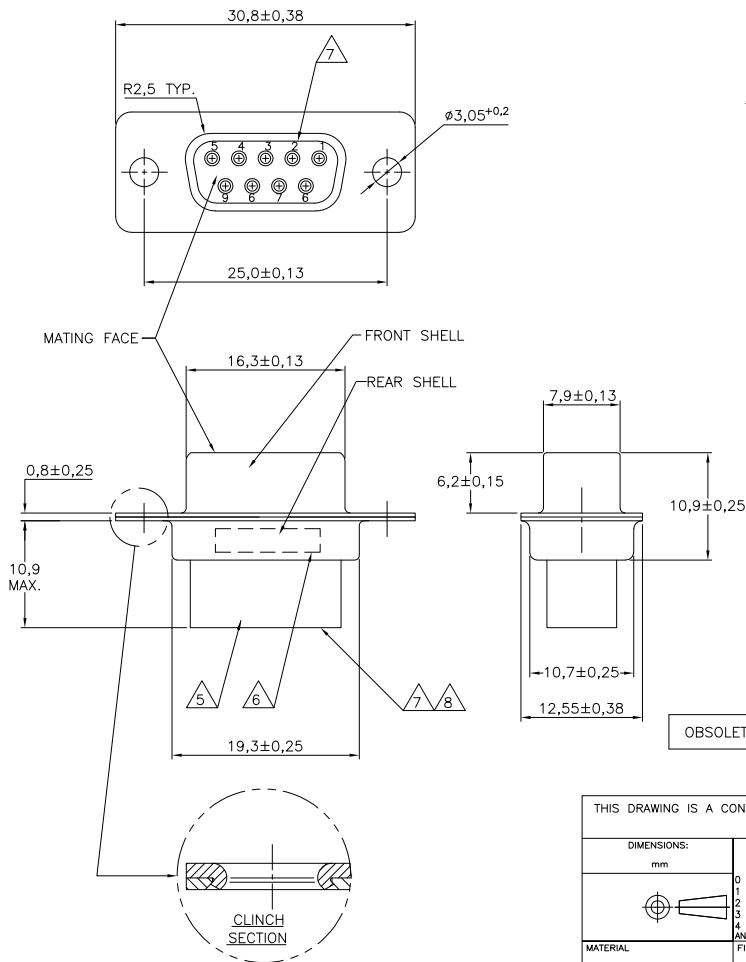
3

2

1

THIS DRAWING IS UNPUBLISHED. RELEASED FOR PUBLICATION
 © COPYRIGHT - BY TYCO ELECTRONICS CORPORATION. ALL RIGHTS RESERVED.

LOC	DIST	REVISIONS				
P	LTR	DESCRIPTION	DATE	DWN	APVD	
	L	ECR-07-008767	16-07-07	BSV	KMA	
	M	ECR-09-004273	02-03-09	AEG	KMA	
	M1	ECR-10-020025	13JAN11	RK	KMA	



NOTES:

- 1 THIS RECEPTACLE ACCEPTS SIZE 20 REC. CONTACTS.
 - 2 MAXIMUM WIRE INSULATION RECOMMENDED FOR USE WITH THIS RECEPTACLE IS 1,73 DIA. MAX..
 - 3 RETENTION TINES ARE AN INTEGRAL PART OF INSERT.
 - 4 FOLLOWING INSERTION/REMOVAL TOOLS ARE RECOMMENDED FOR USE WITH THESE CONNECTORS:
 32-28AWG/28-24AWG CONTACTS
 91067-3 INSERTION/REMOVAL
 726363-1 INSERTION ONLY
 24-20AWG CONTACTS
 726363-1 INSERTION ONLY
 726364-1 REMOVAL ONLY
- △5 INSERTS: GLASSFILLED SELF-EXTINGUISHING PBT, COLOR BLACK.
 △6 TE, PARTNUMBER AND DATE CODE; INK STAMPED.
 △7 RAISED CAVITY IDENTIFICATION 0,8 HIGH.
 △8 RAISED CAVITY IDENTIFICATION NUMBERS ON WIRE SIDE ARE WHITENED FOR 164531-9.

OBSOLETE	BRIGHT TIN	BRIGHT TIN	STEEL	164531-9 △8
	BRIGHT TIN	BRIGHT TIN	STEEL	164531-4
	PLATING FRONT SHELL	PLATING REAR SHELL	MATERIAL SHELLS	PARTNUMBER

THIS DRAWING IS A CONTROLLED DOCUMENT.		DWN D. KESSLER	11FEB99	Tyco Electronics Corporation 's-Hertogenbosch, Nederland	
DIMENSIONS: mm		CHK W. SOOMERS	APVD W. SOOMERS	NAME 9 POS HDP-20 RECEPTACLE CONNECTOR SIZE 1	
TOLERANCES UNLESS OTHERWISE SPECIFIED:		PRODUCT SPEC		RESTRICTED TO	
0 PLC ± -		APPLICATION SPEC		SIZE A3	
1 PLC ± 0,2		WEIGHT		CAGE CODE -	
2 PLC ± -		DRAWING NO C-164531		DRAWING NO	
3 PLC ± -		SCALE NTS		SHEET 1 OF 1	
4 PLC ± -		CUSTOMER DRAWING		REV M1	
FINISH		MATERIAL			
ANGLES ± 2°					