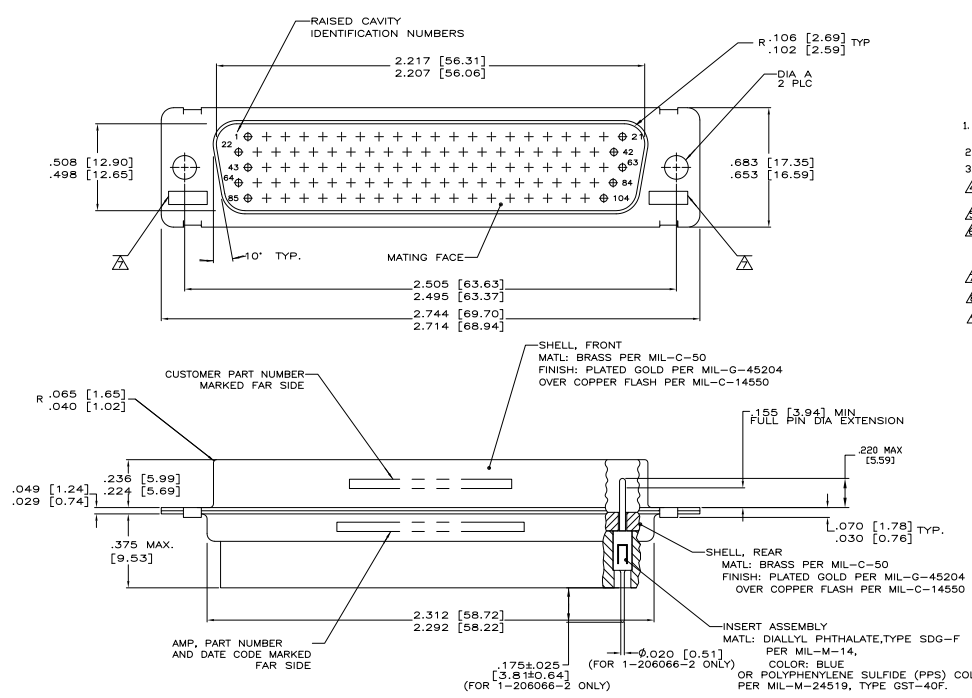
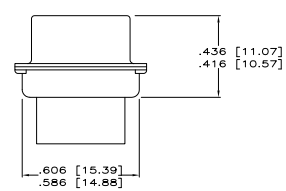


THIS DRAWING IS UNPUBLISHED  
 UNLESS OTHERWISE SPECIFIED  
 ALL RIGHTS RESERVED

REV	DATE	DESCRIPTION	BY	CHK	APP
DF	DO				
Y1		REVISED PER EDD-11-005030		11MM11	RK HMR



- THIS PLUG WILL MATE WITH ANY RECEPTACLE CONNECTOR WITH THE SAME INSERT ARRANGEMENT AS DEFINED BY MS14004-1.
  - MAXIMUM WIRE INSULATION USED WITH THIS PLUG IS .054 DIA.
  - Be-Cu RETENTION CLIPS ARE INCLUDED IN INSERTS.
- ⚠ THESE CONNECTORS ARE QUALIFIED TO GODDARD SPACE FLIGHT CENTER SPECIFICATION S-31-P-4.
  - ⚠ INSPECTION REQUIREMENTS PER R4383.
  - ⚠ CONNECTOR SUPPLIED WITH 115 CONTACTS, PART NUMBER 204370-8. INSPECTION REQUIREMENTS PER R4383 WITHOUT TESTS FOR HIGH ALTITUDE DIELECTRIC WITHSTANDING VOLTAGE AS CALLED FOR IN TABLE II SCREENING AND TESTING.
  - ⚠ UL/CSA DESIGNATION STAMPED IN THIS AREA, OPTIONAL.
  - ⚠ RESTRICTED TO CAE ELECTRONICS ONLY.
  - ⚠ CONNECTOR LOADED WITH POSTED CONTACTS, INSPECTION REQUIREMENTS PER GENERAL ELECTRIC DOCUMENT 20052720



NUMBER 204370-8  
 CSFC PART NUMBER G-08-P1  
 (SUPPLIED WITH 206066-7  
 AND 1-206066-0 ONLY)

⚠	.120 [3.05]	570566-12	1-206066-4	1-206066-4
⚠	.120 [3.05]	20025720P2104P	1-206066-0	1-206066-2
⚠	.120 [3.05]	311P407-6P-B-12	206066-4	1-206066-1
---	.120 [3.05]	20025720P1104P	1-206066-0	1-206066-0
---	.120 [3.05]	1822251-001	206066-9	206066-9
---	.120 [3.05]	7636-11	206066-8	206066-8
---	.120 [3.05]	R4383P104P	206066-7	206066-7
---	.120 [3.05]	R4383P104P-2	206066-6	206066-6
---	.120 [3.05]	SG810139-056	206066-5	206066-5
---	.120 [3.05]	311P407-6P-B-12	206066-4	206066-4
---	.154 [3.91]	---	206066-3	206066-3
---	.154 [3.91]	311P407-6P-B-15	206066-2	206066-2
---	.120 [3.05]	R9259P104P	206066-1	206066-1

REMARKS	DIA A	MARKED	CUSTOMER P/N	MARKED	PART NUMBER

THIS DRAWING IS A CONTROLLED DOCUMENT. DATE: 11-30-88

TE Connectivity

PLUG, PIN CONTACTS  
 HI-DENSITY HDD SERIES  
 HI-DENSITY HDD SERIES

SIZE: A1 00779 (G=206066)

CUSTOMER DRAWING