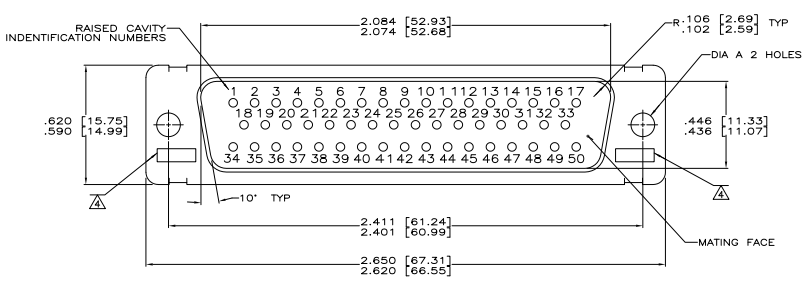
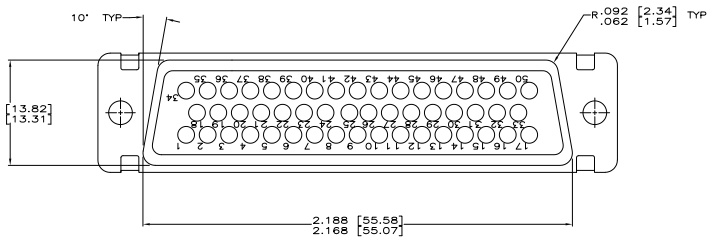
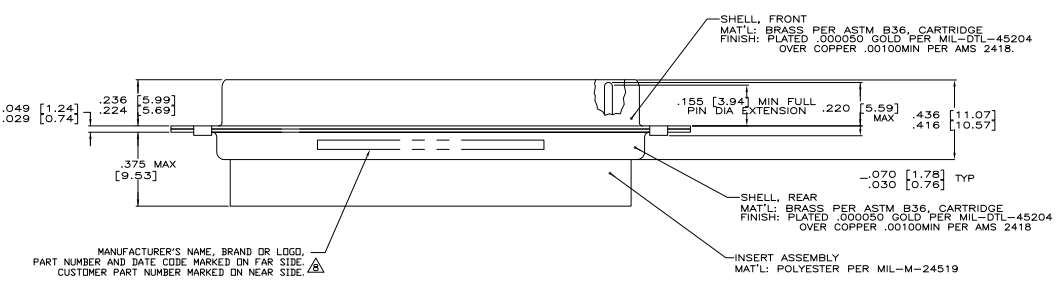


THIS DRAWING IS UNPUBLISHED
 UNLESS OTHERWISE SPECIFIED
 ALL INFORMATION IS UNCLASSIFIED
 DATE 08-01-2008 BY 2142ND09 PK RL

REV	DATE	DESCRIPTION	BY	APP
1	12-31-82	REV PER ECD 08-001200	J	



1. THIS PLUG WILL MATE WITH ANY RECEPTACLE CONNECTOR WITH THE SAME INSERT ARRANGEMENT AS DEFINED BY MS18277-1.
 2. MAXIMUM WIRE INSULATION USED WITH THIS PLUG IS .072 (1.83) DIA.
 3. Be-Cu RETENTION CLIPS ARE INCLUDED IN INSERTS.
 4. UL/CSA DESIGNATION STAMPED IN THIS AREA, OPTIONAL.
 5. RESTRICTED TO CAE ELECTRONIC ONLY.
 6. THESE CONNECTORS ARE QUALIFIED TO GODDARD SPACE FLIGHT CENTER SPECIFICATION S-311-P-4.
 7. CONTACT NOT INCLUDED - SHOWN FOR DIMENSIONAL REFERENCE ONLY.
- △ FAR SIDE REFERS TO WIDE SIDE OF KEYSTONE.



△△	.120 [3.05]	1A01-031PHA	206804-5	206804-5
△△	.120 [3.05]	311P409-5P-B-12	206804-2	206804-4
---	.154 [3.91]	N/A	206804-3	206804-3
△	.120 [3.05]	311P409-5P-B-12	206804-2	206804-2
△	.154 [3.91]	311P409-5P-B-15	206804-1	206804-1
REMARKS	DIA A	CUSTOMER P/N ON CONNECTOR	MFG P/N ON CONNECTOR	MFG P/N

THIS DRAWING IS A CONTROLLED DOCUMENT		DATE	BY	APP
APPROVED	DESIGNED	12-31-82	J. GENEV	
DESIGNED	CHECKED	12-31-82	J. GILLMAN	
DATE	BY	DATE	BY	APP
PROJECT FILE	DATE	PROJECT FILE	DATE	PROJECT FILE
MIL-C-24308		MIL-C-24308		MIL-C-24308
SIZE	DATE	SIZE	DATE	SIZE
A1	00779	A1	00779	A1
CUSTOMER DRAWING		CUSTOMER DRAWING		CUSTOMER DRAWING