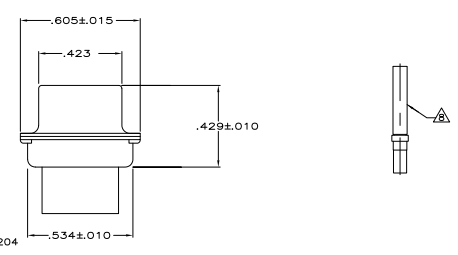
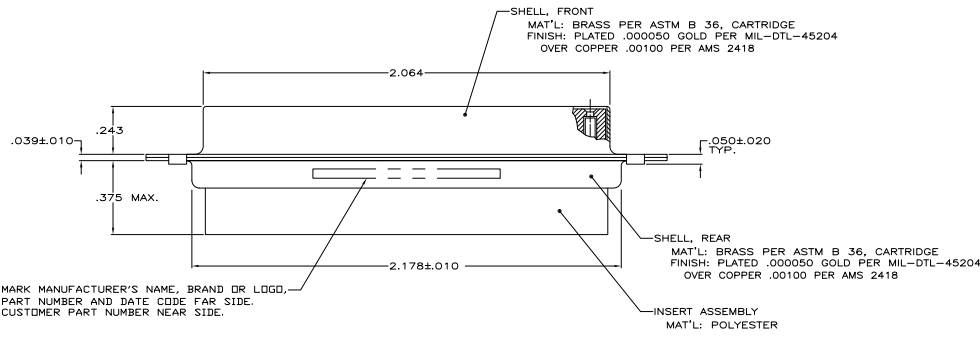


1. THIS RECEPTACLE WILL MATE WITH ANY PLUG CONNECTOR WITH THE SAME INSERT ARRANGEMENT AS DEFINED BY MS18277-1.
 2. MAXIMUM WIRE INSULATION USED WITH THIS RCPT. IS .072 DIA. MAX.
 3. Be-Cu RETENTION CLIPS ARE INCLUDED IN INSERTS.
- ▲ FAR SIDE REFERS TO WIDE SIDE OF KEYSTONE.
 - ▲ UL/CSA DESIGNATION STAMPED IN THIS AREA, OPTIONAL
 - ▲ THIS CONNECTOR IS QUALIFIED TO GODDARD SPACE FLIGHT CENTER S-311-P-4.
 - ▲ RESTRICTED TO CAE ELECTRONICS ONLY.
 - ▲ CONNECTOR SUPPLIED WITH 50 CONTACTS, AMP PART NUMBER 206793-1; (NOT INSTALLED).



MARK MANUFACTURER'S NAME, BRAND OR LOGO, PART NUMBER AND DATE CODE FAR SIDE. CUSTOMER PART NUMBER NEAR SIDE.

NOT RELEASED FOR PRODUCTION

▲	.120	LMSC 1621480-005	206805-9	206805-9
▲	.120	LMSC 1621480-005	206805-8	206805-8
▲	.120	311P409-5S-B-12	206805-2	206805-7
▲	—	1A01-032RHA	—	206805-6
OBSELETE	—	—	—	206805-5
OBSELETE	.120	2A014-010V-001	206805-4	206805-4
▲	.154	—	206805-3	206805-3
▲	.120	311P409-5S-B-12	206805-2	206805-2
▲	.154	311P409-5S-B-15	206805-1	206805-1
REMARKS	DIA A	INK STAMPED CUSTOMER P/N	INK STAMPED MFG P/N	PART NUMBER

THIS DRAWING IS A CONTROLLED DOCUMENT. DATE: 11-14-88
 DRAWN BY: J. DANIELIN 11-24-87
 CHECKED BY: [Signature]
 APPROVED BY: [Signature]
 TITLE: RECEPTACLE FOR SOCKET CONTACTS, HI-DENSITY HDM CONNECTOR, HI-SENSITIVITY HDM CONNECTOR.
 SIZE: A1
 DATE: 00779
 Q=206805
 CUSTOMER DRAWING
 SHEET: 4.1 OF 1