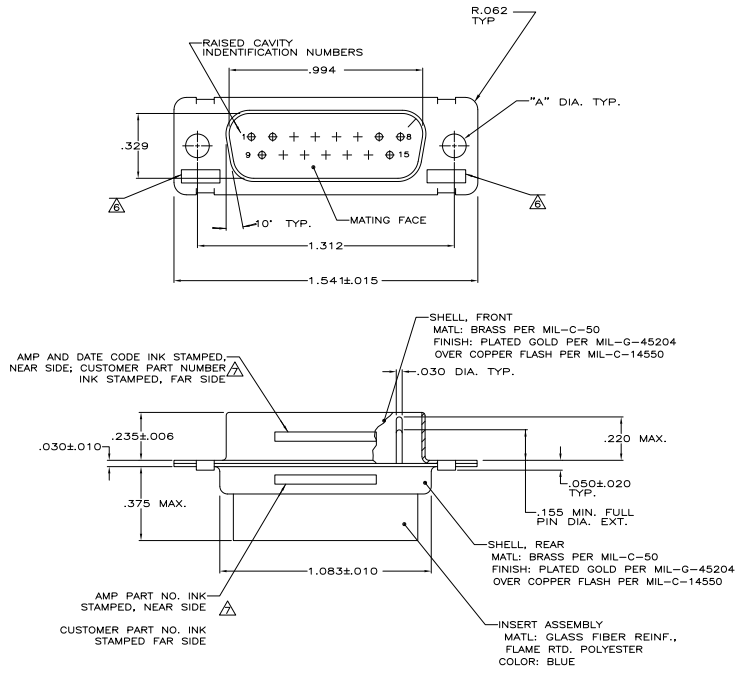


REV	DATE	DESCRIPTION	BY	CHK	APP
DF	DO				
M		REV PER EOC-10-002015			



- ⚠ THIS PLUG WILL MATE WITH ANY RECEPTACLE CONNECTOR WITH THE SAME INSERT ARRANGEMENT AS DEFINED BY MS16274-1.
- 2. MAXIMUM WIRE INSULATION TO BE USED WITH THIS PLUG IS .072 [1.83] DIA.
- 3. BERYLLIUM COPPER RETENTION CLIPS (15) ARE INCLUDED IN INSERT ASSEMBLY.
- 4. CONNECTOR SUPPLIED WITHOUT CONTACTS; SHOWN FOR ILLUSTRATION ONLY.
- ⚠ THESE CONNECTORS ARE QUALIFIED TO GODDARD SPACE FLIGHT CENTER SPECIFICATION S-311-P-4.
- ⚠ UL/CSA DESIGNATION STAMPED IN THIS AREA, OPTIONAL.
- ⚠ CUSTOMER PART NUMBER MAY BE SPLIT BETWEEN FRONT AND REAR SHELL, SAME SIDE. FAR SIDE REFERS TO WIDE SIDE OF KEYSTONE, NEAR SIDE REFERS TO NARROW SIDE OF KEYSTONE.
- ⚠ RESTRICTED TO CAE ELECTRONICS ONLY.
- ⚠ CONTACTS FOR 206798-8 ARE UNASSEMBLED.

CONTACT P/N 205089-1
 (MIL-39029/64-369)
 (SUPPLIED WITH 206798-8 ONLY)
 QTY = 15

REV	DATE	DESCRIPTION	BY	CHK	APP
1.20	570513-7	206798-9			206798-9
1.20	B41-P10009-0013	206798-8			206798-8
1.20	311P409-2P-B-12	206798-2			206798-7
1.20	122137P15P	206798-6			206798-6
1.20	2A014-002V-001	206798-4			206798-4
1.54	-	206798-3			206798-3
1.20	311P409-2P-B-12	206798-2			206798-2
1.54	311P409-2P-B-15	206798-1			206798-1

REMARKS	DIA A	INK STAMPED CUSTOMER P/N	INK STAMPED AMP P/N	ASSEMBLY NUMBER

THIS DRAWING IS A CONTROLLED DOCUMENT.		REV. 12-2-88	12-11-88
DESIGNED BY: [Signature]		DATE: [Signature]	DATE: [Signature]
CHECKED BY: [Signature]		DATE: [Signature]	
APPROVED BY: [Signature]		DATE: [Signature]	
SEE CALLOUTS		SEE CALLOUTS	

INSTRUCTIONS: 1. DIMENSIONS UNLESS OTHERWISE SPECIFIED ARE IN INCHES. 2. DIMENSIONS IN PARENTHESES ARE FOR INFORMATION ONLY. 3. DIMENSIONS IN SQUARE BRACKETS ARE FOR INFORMATION ONLY. 4. DIMENSIONS IN BRACKETS ARE FOR INFORMATION ONLY. 5. DIMENSIONS IN BRACKETS ARE FOR INFORMATION ONLY. 6. DIMENSIONS IN BRACKETS ARE FOR INFORMATION ONLY. 7. DIMENSIONS IN BRACKETS ARE FOR INFORMATION ONLY. 8. DIMENSIONS IN BRACKETS ARE FOR INFORMATION ONLY. 9. DIMENSIONS IN BRACKETS ARE FOR INFORMATION ONLY. 10. DIMENSIONS IN BRACKETS ARE FOR INFORMATION ONLY.	PLUG FOR PIN CONTACTS SERIES 109, SIZE 2 15 POSITION SIZE: [Signature] DATE: [Signature] DRAWING NO: [Signature] CUSTOMER P/N: [Signature] REV: [Signature]
--	--