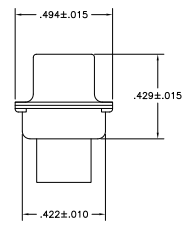
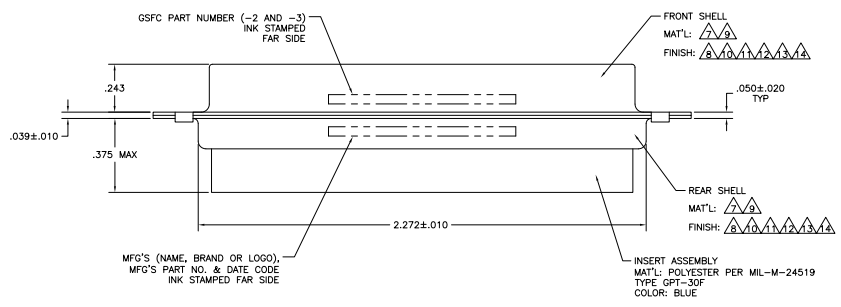


1. THIS RECEPTACLE WILL MATE WITH ANY 21CA, SIZE 4 PLUG IN AMPLIMITE SERIES.
2. MAXIMUM WIRE INSULATION TO BE USED WITH THIS RECEPTACLE IS #.072.
3. RETENTION CLIPS (17) ARE INCLUDED IN INSERT ASSEMBLY.
4. THIS CONNECTOR ACCEPTS SIZE 20 SOCKET CONTACTS, NOT PROVIDED, IN CAVITIES 1 THRU 17.
5. CAVITIES A1 THRU A4 ACCEPTS SIZE 8 POWER, OR COAX SOCKET CONTACTS, NOT PROVIDED. RIGHT ANGLE COAX CONTACTS WILL NOT SEAT IN THIS CONNECTOR.

- △ UL/CSA DESIGNATION STAMPED IN THIS AREA, OPTIONAL.
- △ MATERIAL: STEEL PER ASTM-A-109.
- △ FINISH: CADMIUM PLATED PER QQ-P-416, TYPE II, CLASS 2.
- △ MATERIAL: BRASS PER ASTM-B-36.
- △ FINISH: GOLD PER MIL-G-45204 TYPE II, GRADE C, CLASS 1 OVER COPPER PER MIL-C-14550, CLASS IV.
- △ FINISH: TIN PER ASTM-B-545 .000200 MIN THK OVER COPPER PER AMS2418 .000100-.000200 THK.
- △ FINISH: BRIGHT TIN PER ASTM-B-545 .000400-.000550 THK OVER COPPER PER AMS2418 .000050 MIN THK.
- △ FINISH: TIN PER ASTM-B-545 .000200 MIN THK OVER COPPER PER AMS2418 .000100-.000200 THK.
- △ FINISH: ZINC PLATE PER ASTM-B-633 .000200-.000400 THK WITH SUPPLEMENTARY CHROMATE (Cr3+).



REMARKS	8A	GSFC P/N	PART NO.
△△△	.120	-	S-212534-4
△△△	.120	-	S-212534-1
△△△	.120	-	212534-5
△△△	.120	-	212534-4
△△△	.154	311P405-18S-B-15	212534-3
△△△	.120	311P405-18S-B-12	212534-2
△△△	.120	-	212534-1

THIS DRAWING IS A CONTROLLED DOCUMENT. TYPED IN CHANGES. STAMPED IN CHANGES.

REVISIONS: 1. 00779 (Q)=212534

CUSTOMER DRAWING

Yates Electronics Corporation
Harrisburg, PA 17105-3608

RECEPTACLE ASSEMBLY
AMPLIMITE 21CA
SIZE 4, SERIES 109, COAX MIX

DATE: 15FEB10

BY: PY

CHK: RL

SCALE: 4:1

SHEET: 1 OF 1