

4

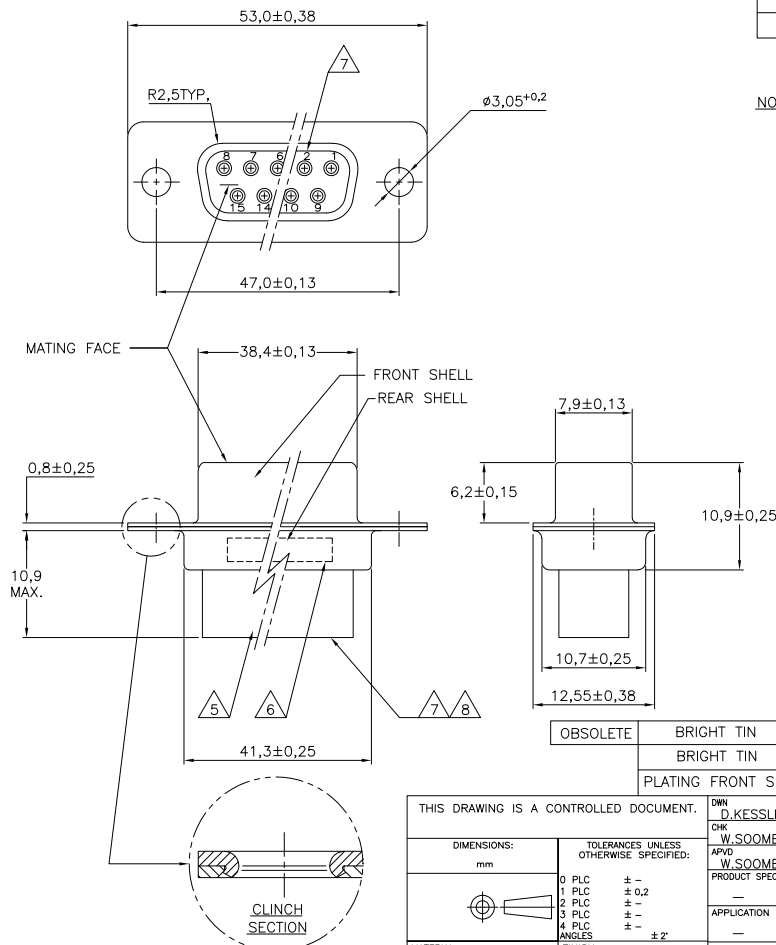
3

2

1

THIS DRAWING IS UNPUBLISHED. RELEASED FOR PUBLICATION  
 © COPYRIGHT - BY TYCO ELECTRONICS CORPORATION. ALL RIGHTS RESERVED.

| LOC | DIST | REVISIONS     |          |     |      |  |
|-----|------|---------------|----------|-----|------|--|
| P   | LTR  | DESCRIPTION   | DATE     | DWN | APVD |  |
|     | L    | ECR-07-008767 | 16-07-07 | BSV | KMA  |  |
|     | N    | ECR-09-004273 | 02-03-09 | AEG | KMA  |  |
|     | N1   | ECR-10-020025 | 13JAN11  | RK  | KMA  |  |



## NOTES:

- THIS RECEPTACLE ACCEPTS SIZE 20 REC. CONTACTS.
  - MAXIMUM WIRE INSULATION RECOMMENDED FOR USE WITH THIS RECEPTACLE IS 1,73 DIA. MAX..
  - RETENTION TINES ARE AN INTEGRAL PART OF INSERT.
  - FOLLOWING INSERTION/REMOVAL TOOLS ARE RECOMMENDED FOR USE WITH THESE CONNECTORS:  
 32-28AWG/28-24AWG CONTACTS  
 91067-3 INSERTION/REMOVAL  
 726363-1 INSERTION ONLY  
 24-20AWG CONTACTS  
 726363-1 INSERTION ONLY  
 726364-1 REMOVAL ONLY
- △ INSERTS: GLASSFILLED SELF-EXTINGUISHING PBT, COLOR BLACK.  
 △ TE, PARTNUMBER AND DATE CODE; INK STAMPED.  
 △ RAISED CAVITY IDENTIFICATION 0,8 HIGH.  
 △ RAISED CAVITY IDENTIFICATION NUMBERS ON WIRE SIDE ARE WHITENED FOR 164533-9.

|          |                     |                    |                 |            |   |
|----------|---------------------|--------------------|-----------------|------------|---|
| OBSOLETE | BRIGHT TIN          | BRIGHT TIN         | STEEL           | 164533-9   | △ |
|          | BRIGHT TIN          | BRIGHT TIN         | STEEL           | 164533-4   |   |
|          | PLATING FRONT SHELL | PLATING REAR SHELL | MATERIAL SHELLS | PARTNUMBER |   |

|  |  |                   |                    |   |  |
|--|--|-------------------|--------------------|---|--|
| THIS DRAWING IS A CONTROLLED DOCUMENT. |  | DWN<br>D. KESSLER | 11FEB99            | Tyco Electronics Corporation<br>'s-Hertogenbosch, Nederland |  |
| DIMENSIONS:<br>mm                      |  | CHK<br>W. SOOMERS | APVD<br>W. SOOMERS | NAME<br>25 POS HDP-20 RECEPTACLE<br>CONNECTOR SIZE 3        |  |
| TOLERANCES UNLESS OTHERWISE SPECIFIED: |  | PRODUCT SPEC      |                    | RESTRICTED TO   |  |
| 0 PLC ± -                              |  | APPLICATION SPEC  |                    | SIZE<br>A3  |  |
| 1 PLC ± 0,2                            |  | WEIGHT            |                    | CAGE CODE<br>-  |  |
| 2 PLC ± -                              |  | DRAWING NO        |                    | DRAWING NO<br>164533  |  |
| 3 PLC ± -                              |  | MATERIAL          |                    | SCALE<br>NTS  |  |
| 4 PLC ± -                              |  | FINISH            |                    | SHEET<br>1 OF 1   |  |
| ANGLES ± 2°                            |  | CUSTOMER DRAWING  |                    | REV<br>N1   |  |