

4

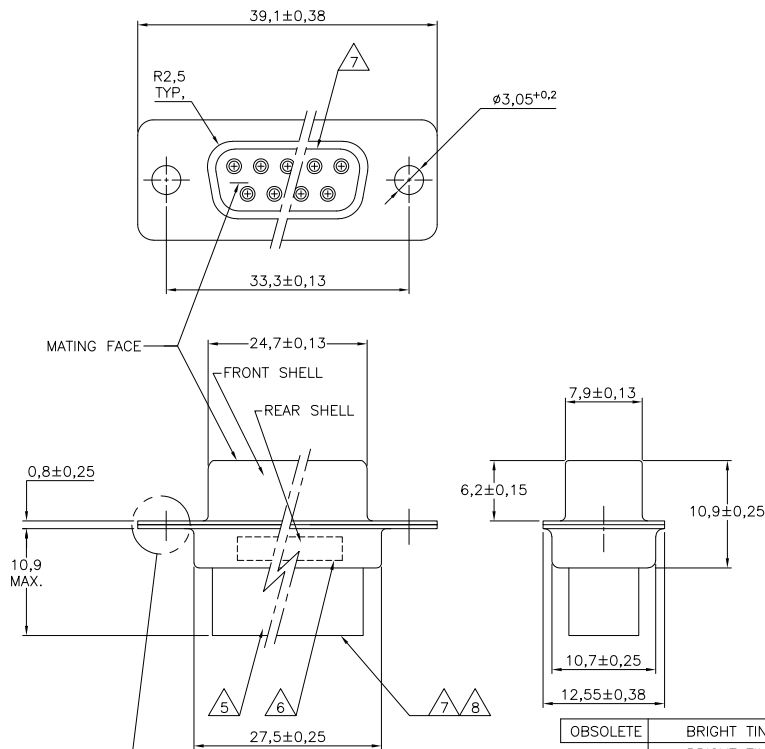
3

2

1

THIS DRAWING IS UNPUBLISHED. RELEASED FOR PUBLICATION
 © COPYRIGHT - BY TYCO ELECTRONICS CORPORATION. ALL RIGHTS RESERVED.

LOC	DIST	REVISIONS				
P	LTR	DESCRIPTION	DATE	DWN	APVD	
M		ECR-07-008767	16-07-07	BSV	KMA	
P		ECR-09-004273	02-03-09	AEG	KMA	
P1		ECR-10-020025	13JAN11	RK	KMA	



NOTES:

- THIS RECEPTACLE ACCEPTS SIZE 20 REC. CONTACTS.
 - MAXIMUM WIRE INSULATION RECOMMENDED FOR USE WITH THIS RECEPTACLE IS 1,73 DIA. MAX..
 - RETENTION TINES ARE AN INTEGRAL PART OF INSERT.
 - FOLLOWING INSERTION/REMOVAL TOOLS ARE RECOMMENDED FOR USE WITH THESE CONNECTORS:
 32-28AWG/28-24AWG CONTACTS
 91067-3 INSERTION/REMOVAL
 726363-1 INSERTION ONLY
 24-20AWG CONTACTS
 726363-1 INSERTION ONLY
 726364-1 REMOVAL ONLY
- △ INSERTS: GLASSFILLED SELF-EXTINGUISHING PBT, COLOR BLACK.
 △ TE, PARTNUMBER AND DATE CODE; INK STAMPED.
 △ RAISED CAVITY IDENTIFICATION 0,8 HIGH.
 △ RAISED CAVITY IDENTIFICATION NUMBERS ON WIRE SIDE ARE WHITENED FOR 164532-9.

OBSOLETE	BRIGHT TIN	BRIGHT TIN	STEEL	164532-9	△
	BRIGHT TIN	BRIGHT TIN	STEEL	164532-4	
	PLATING FRONT SHELL	PLATING REAR SHELL	MATERIAL SHELLS	PARTNUMBER	

THIS DRAWING IS A CONTROLLED DOCUMENT.		DWN D.KESSLER	11FEB99	Tyco Electronics Corporation 's-Hertogenbosch, Nederland	
DIMENSIONS: mm		CHK W.SOOMERS		NAME	
TOLERANCES UNLESS OTHERWISE SPECIFIED:		APVD W.SOOMERS		15 POS HDP-20 RECEPTACLE CONNECTOR SIZE 2	
0 PLC ±		PRODUCT SPEC		SIZE	RESTRICTED TO
1 PLC ±0,2		APPLICATION SPEC		A3	
2 PLC ±		WEIGHT		CAGE CODE	DRAWING NO
3 PLC ±				-	164532
4 PLC ±					
ANGLES ±2°					
MATERIAL	FINISH				
CUSTOMER DRAWING			SCALE	SHEET	REV
			NTS	1 OF 1	P1

AMP 1470-19 REV 31MAR2000