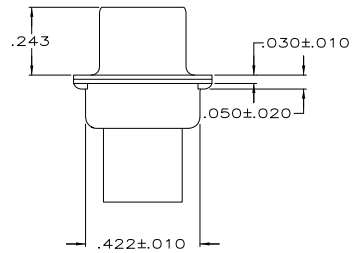
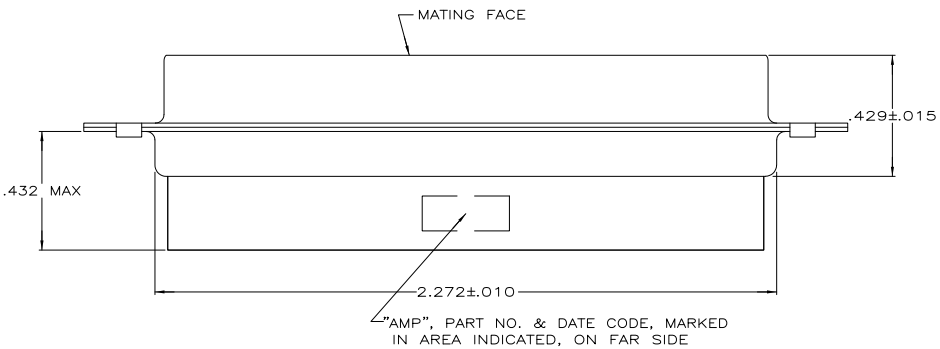
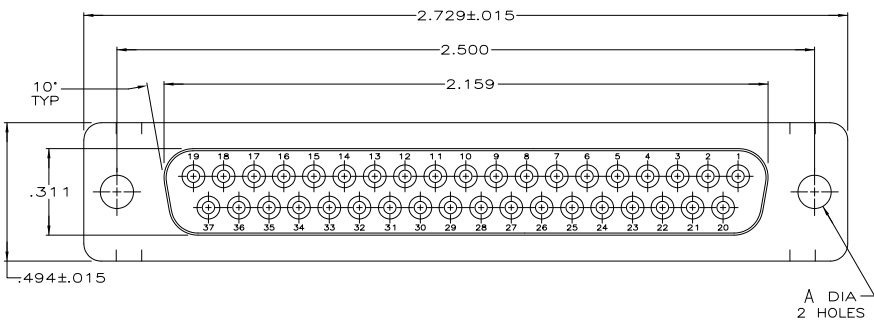


THIS DRAWING IS UNPUBLISHED. RELEASED FOR PUBLICATION
 © COPYRIGHT - By - ALL RIGHTS RESERVED.

| LOC | DIST | REVISIONS | | |
|-----|------|---------------------------|---------|--------|
| P | LR | DESCRIPTION | DATE | BY |
| GP | 00 | | | |
| | K2 | REVISED PER ECO-11-004835 | 11MAR11 | RK HMR |



- CONNECTOR ACCEPTS SIZE 20 DF SOCKET CONTACTS, RETENTION TINES ARE AN INTEGRAL PART OF INSERT.
 - CONNECTOR COMPLIES WITH 108-40005 WHERE APPLICABLE.
- ▲ NYLON, FLAME RETARDANT, 94V-0 RATED, GLASS FILLED, BLACK.
 - ▲ STEEL PER ASTM A109.
 - ▲ ZINC PLATED PER ASTM B633; TYPE II; CLASS SC1; YELLOW CHROMATE.
 - ▲ TIN OR TIN-LEAD PLATED PER MIL-T-10727.
 - ▲ TIN PLATED PER MIL-T-10727 OVER COPPER PER MIL-C-14550.
 - ▲ ZINC PLATED .000200-.000400 THICK, YELLOW TRIVALENT CHROMIUM CHROMATE COATING.

SUPERSEDED BY 205209-1
 OBSOLETE
 OBSOLETE

| PACKAGING TYPE | SHELL FINISH | PART NUMBER |
|----------------|--------------|---------------|
| STANDARD | ▲ | .120 205209-7 |
| SMALL PACK | ▲ | .120 205209-6 |
| STANDARD | ▲ | .154 205209-3 |
| STANDARD | ▲ | .120 205209-2 |
| STANDARD | ▲ | .120 205209-1 |

THIS DRAWING IS A CONTROLLED DOCUMENT.

| | |
|---------------------------|----------------------|
| DESIGNER: S. WELDON | DATE: 7-19-85 |
| CHK: J. GERACE | DATE: 7-29-85 |
| APP: - | NAME: - |
| PRODUCT SPEC: - | APPLICATION SPEC: - |
| HEIGHT: - | SIZE: A2 |
| MATERIAL: SEE NOTES | CAGE CODE: 00779 |
| FINISH: SHELLS: SEE TABLE | DRAWING NO: C-205209 |
| | SCALE: 4:1 |
| | SHEET: 1 of 1 |
| | REV: K2 |

RECEPTACLE CONNECTOR, SIZE 4, 37 POSITION, AMPLIMITE HDP

TE Connectivity

RESTRICTED TO