

4

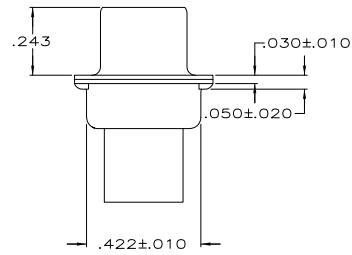
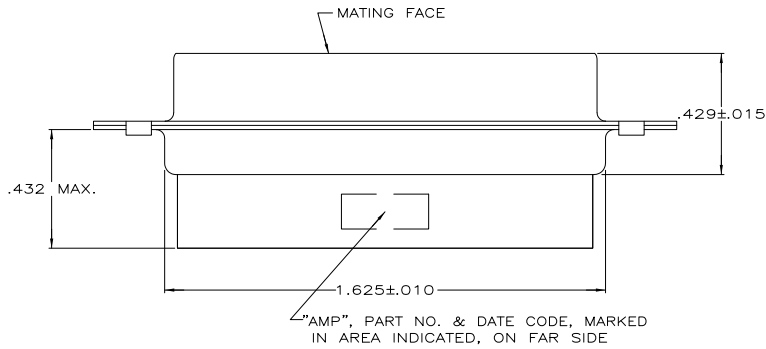
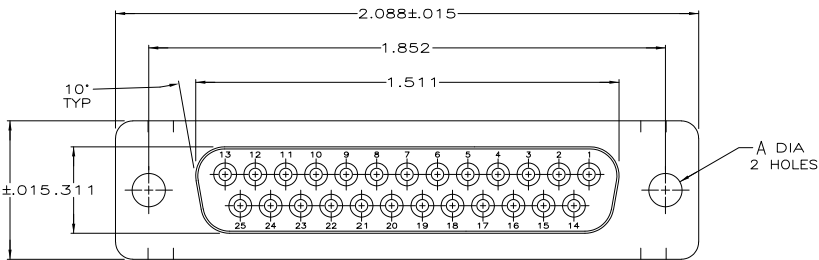
3

2

1

THIS DRAWING IS UNPUBLISHED. RELEASED FOR PUBLICATION
 © COPYRIGHT - By - ALL RIGHTS RESERVED.

LOC		DIBT		REVISIONS			
GP	00	P	LTR	DESCRIPTION	DATE	BY	APPD
		D1		REVISED PER ECO-11-004835	11MAR11	RK	HMR



- CONNECTOR ACCEPTS SIZE 20 DF SOCKET CONTACTS, RETENTION TINES ARE AN INTEGRAL PART OF INSERT.
 - CONNECTOR COMPLIES WITH 108-4005 WHERE APPLICABLE.
- ▲ NYLON, FLAME RETARDANT, 94V-0 RATED, GLASS FILLED, BLACK.
 - ▲ STEEL PER ASTM A109.
 - ▲ TIN OR TIN-LEAD PLATED PER MIL-T-10727.
 - ▲ TIN PLATED PER MIL-T-10727 OVER COPPER PER MIL-C-14550.

OBSOLETE	SMALL PACK	▲	.120	207463-4
OBSOLETE	STANDARD	▲	.154	207463-2
	STANDARD	▲	.120	207463-1
	PACKAGING TYPE			
		SHELL FINISH	A	PART NO

THIS DRAWING IS A CONTROLLED DOCUMENT.		DR	7-19-05	 TE Connectivity	RECEPTACLE CONNECTOR, SIZE 3, 25 POSITION, AMPLIMITE™ HDP	RESTRICTED TO
DIMENSIONS:		OK	7-20-05			
INCHES		J GERACE	7-20-05			
OTHER DIMENSIONS:		L BREKOSKY	7-20-05			
MATERIAL:		APPLICATION SPEC		SIZE	CAGE CODE	DRAWING NO
MOLDED PARTS: ▲		FINISH		A2	00779	C-207463
SHELLS: SEE TABLE		RIGHT		CUSTOMER DRAWING		SCALE
				4:1	SHEET	1 of 1
						REV
						D1

THIS DRAWING IS A CONTROLLED DOCUMENT FOR AMP INCORPORATED. IT IS SUBJECT TO CHANGE AND THE CONTROLLING ENGINEERING ORGANIZATION SHOULD BE CONTACTED FOR THE LATEST REVISION.