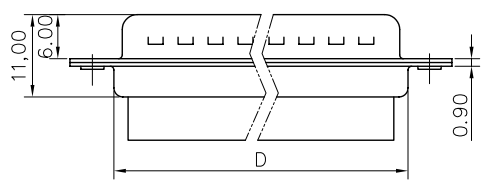
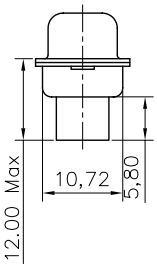
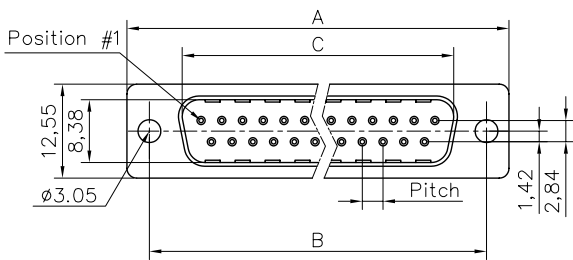


This document is the property of Amphenol Corporation and is delivered on the express condition that it is not to be disclosed, reproduced or used, in whole or in part, for manufacturing of parts by anyone other than Amphenol Corporation without its prior consent. & that no right is granted to disclose or to use any information in this document.



Customer drawing

DIM.S SHELL	A	B	C	E	Pitch
9	30.84	24.99	16.92	19.28	2.74
15	39.24	33.32	24.70	27.51	2.74
25	53.04	47.04	38.96	41.30	2.77
37	69.32	63.50	55.42	57.71	2.77

REVISIONS				
SYM	EDN	DESCRIPTION	DATE	APPROVED
1			01/04/08	

D-SUB TECHNICAL DATA

SHELL : Steel 2.5um (100u") min tin over 1.25um (50u") min nickel
 BODY : Glass filled thermoplastic.
 Flame retardant to UL94 V-0 Color Black
 ELECTRICAL : Voltage rating : 1000 V RMS at 60 Hz
 Insulation resistance >1000 M Ohms
 CLIMATIC : Temperature range -55 °C up to 125°C
 MARKING : Amphenol...(Series No.)
 Commercial reference
 Manufacturing date

PRODUCT CODE

L 777RR X XX P

L: RoHS Compliance

777RR: tinned shell + dimples for plug

Shell Size: E,A,B,C

Contact type:
P: Male

Configuration: 09,15,25,37

UNLESS OTHERWISE SPECIFIED		APPROVAL	DATE
TOLERANCES		DRAWN	Checked out 01/04/08
.X +/-	0.50	CHECKED	14k.wong 01/04/08
.XX +/-	0.30	CHECKED	
.XXX +/-	0.20		
FRACTIONS			
ANGLES +/-	2°		
FOR MATERIALS AND FINISHES SEE LOGS		DRAWING FILE :	
REMOVE SHARP EDGES		ANGLE OF PROJECTION	
DIMENSIONS			
D.S.			
INCHES			
MM			

Amphenol

TITLE		
stamped and formed connector, RR series		
SIZE	DRAWING NO.	REV.
A4	C L777RRXXYP	1
SCALE	NONE	SHEET 1 OF 1