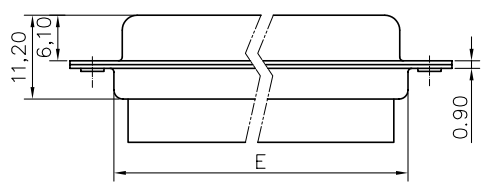
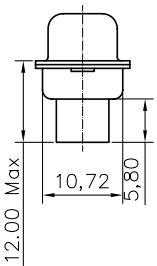
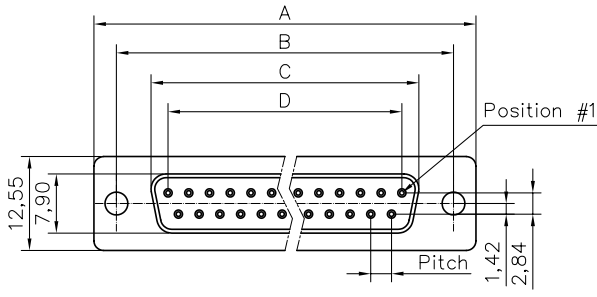


This document is the property of Amphenol Corporation and is delivered on the express condition that it is not to be disclosed, reproduced or used, in whole or in part, for manufacture or sale by anyone other than Amphenol Corporation without its prior consent, & that no right is granted to disclose or to use any information in this document.



Customer drawing

DIM.S SHELL	A	B	C	D	E	Pitch
9	30.84	24.99	16.24	11.09	19.28	2.74
15	39.24	33.32	24.56	19.39	27.51	2.74
25	53.04	47.04	38.38	33.24	41.30	2.77
37	69.32	63.50	54.76	49.86	57.71	2.77

REVISIONS				
SYM	ECN	DESCRIPTION	DATE	APPROVED
1			12/13/07	

D-SUB TECHNICAL DATA

SHELL : Steel 2.5um (100u") min tin over 1.25um (50u") min nickel
 BODY : Glass filled thermoplastic.
 Flame retardant to UL94 V-0 Color Black
 ELECTRICAL : Voltage rating : 1000 V RMS at 60 Hz
 Insulation resistance >1000 M Ohms
 CLIMATIC : Temperature range -55 °C up to 125°C
 MARKING : Amphenol-...(Series No.)
 Commercial reference
 Manufacturing date

PRODUCT CODE

L 177RR X XX S

L: RoHS Compliance

177: tinned shell for receptacle

Shell Size: E,A,B,C

Contact type: S:Female

Configuration: 09,15,25,37

UNLESS OTHERWISE SPECIFIED TOLERANCES U.S. METRIC X +/- 0.50 XX +/- 0.30 XXX +/- 0.20 FRACTIONS +/- ANGLES +/- 2° FOR MATERIALS AND FINISHES SEE NOTES REMOVE SHARP EDGES DIMENSIONS U.S. INCHES METRIC MM	APPROVAL DRAWN <i>Duang Li</i> CHECKED <i>lik.wong</i> 12/13/07	DATE 12/13/07	Amphenol
	DRAWING FILE : ANGLE OF PROJECTION 	TITLE stamped and formed connector, RR series	
SIZE A4 SCALE NONE	DRAWING NO. C L177RRXXS	REV. 1	SHEET 1 OF 1