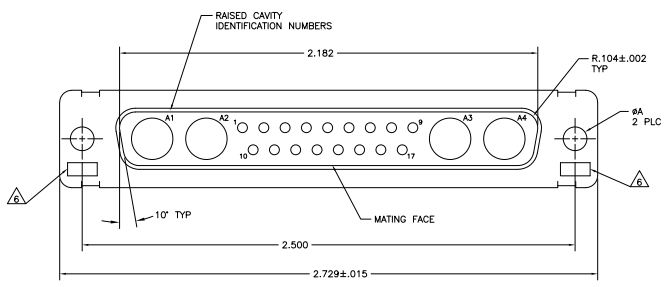


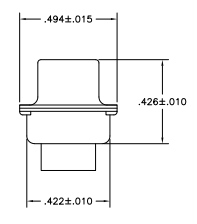
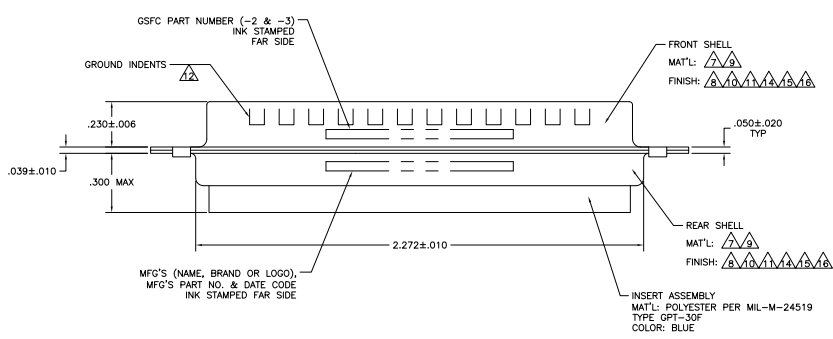
THIS DRAWING IS UNPUBLISHED  
 REVISIONS FOR INFORMATION  
 © COMPANY NO. BY TYS ELECTRONICS CORPORATION ALL INFORMATION MUST REMAIN

REV	DATE	DESCRIPTION	BY	CHK
N	21-08-08		PK	EW
P	20-03-09		CT	RL



1. THIS PLUG WILL MATE WITH ANY 21C4, SIZE 4 RECEPTACLE IN AMPLIMITE SERIES.
2. MAXIMUM WIRE INSULATION TO BE USED WITH THIS PLUG IS #.072.
3. RETENTION CLIPS (17) ARE INCLUDED IN INSERT ASSEMBLY.
4. THIS CONNECTOR ACCEPTS SIZE 20 PIN CONTACTS, NOT PROVIDED, IN CAVITIES 1 THRU 17.
5. CAVITIES A1 THRU A4 ACCEPTS SIZE 8 POWER OR COAX PIN CONTACTS, NOT PROVIDED. RIGHT ANGLE COAX CONTACTS WILL NOT SEAT IN THIS CONNECTOR.

- △ UL/CSA DESIGNATION STAMPED IN THIS AREA, OPTIONAL.
- △ MATERIAL: STEEL PER ASTM-A-109.
- △ FINISH: CADMIUM PLATED PER QQ-P-416, TYPE II, CLASS 2.
- △ MATERIAL: BRASS PER ASTM-B-36.
- △ FINISH: GOLD PER MIL-C-45204, TYPE II, GRADE C, CLASS 1 OVER COPPER PER MIL-C-14550, CLASS IV.
- △ FINISH: TIN PER ASTM-B-545 .000200 MIN THK OVER COPPER PER AMS2418 .000100-.000200 THK.
- △ GROUNDING INDENTS FOR 212530-4, 212530-5, & 5-212530-4 ONLY.
- 13. 212530-6 IS OBSOLETE.
- △ FINISH: BRIGHT TIN PER ASTM-B-545 .000400-.000550 THK OVER COPPER PER AMS2418 .000050 MIN THK.
- △ FINISH: TIN PER ASTM-B-545 .000200 MIN THK OVER COPPER PER AMS2418 .000100-.000200 THK.
- △ FINISH: ZINC PLATE PER ASTM-B-633 .000200-.000400 THK WITH SUPPLEMENTARY CHROMATE (Cr3+).



△△△	.120	-	5-212530-4
△△	.120	-	5-212530-1
△△	.120	-	212530-6
△△△	.120	-	212530-5
△△	.120	-	212530-4
△△△	.154	311P405-18P-B-15	212530-3
△△	.120	311P405-18P-B-12	212530-2
△	.120	-	212530-1

THIS DRAWING IS A CONTROLLED DOCUMENT. **THOMAS** 21-08-08 **TYS** Electronics Corporation Harrisburg, PA 17105-3608

DESIGNER: **EMAL** 21-08-08 **PK** **EW**

DATE: **EMAL** 21-08-08 **PK** **EW**

PLUG ASSEMBLY  
 AMPLIMITE 21C4  
 SIZE 4, SERIES 109, COAX MIX

SIZE: **A1** 00779 **C**=212530

CUSTOMER DRAWING

DATE: 4-1 SHEET 1 OF 1