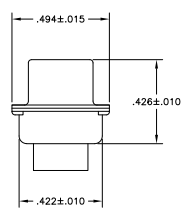
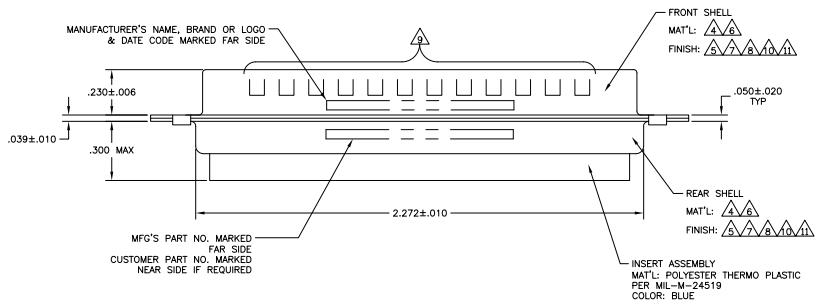


- THIS PLUG WILL MATE WITH ANY 8CS, SIZE 4 RECEPTACLE IN AMPLIMITE SERIES.
  - USE (8) SIZE 8 POWER, OR COAX PIN CONTACTS. CONSULT PRODUCT ENGINEERING FOR MORE DETAILS.
- ▲ UL/CSA DESIGNATION STAMPED IN THIS AREA, OPTIONAL.
  - ▲ STEEL PER ASTM-A-109.
  - ▲ CADMIUM PLATED PER QQ-P-416, TYPE II, CLASS 2.
  - ▲ BRASS PER ASTM-B-36 AND MIL-C-50.
  - ▲ FINISH: PLATED GOLD PER ASTM-B-488, TYPE 3, CODE C, CLASS 1.25 OVER COPPER PLATE PER MIL-C-14550, CLASS IV.
  - ▲ FINISH: TIN PER ASTM-B-545, .000200 MIN THK OVER COPPER PER AMS2418, .000100-.000200 THK.
  - ▲ GROUNDING INDENTS FOR 446405-4 & 5-446405-4 ONLY.
  - ▲ FINISH: TIN PER ASTM-B-545, .000200 MIN THK OVER COPPER PER AMS2418, .000100-.000200 THK.
  - ▲ FINISH: ZINC PLATE PER ASTM-B-633, .000200-.000400 THK WITH SUPPLEMENTARY CHROMATE (Cr3+).



REMARKS	CUSTOMER PART NO.	8A	DESCRIPTION	PART NO.
			MIL-C-24308 EQUIVALENT	5-446405-4
	B010942-0041	.120		5-446405-1
	ST81D284-001	.120		446405-6
		.120		446405-5
	97942-645A935H02	.120		446405-4
	311P405-15P-B-15	.154	NON-MAGNETIC NASA QUALIFIED	446405-3
	311P405-15P-B-12	.120	NON-MAGNETIC NASA QUALIFIED	446405-2
		.120	MIL-C-24308 EQUIVALENT	446405-1

THIS DRAWING IS A CONTROLLED DOCUMENT.

DESIGNER: J. THOMAS (25-001-10)  
 CHECKER: J. THOMAS (25-001-10)  
 DATE: 02-07-88

MANUFACTURED BY: **Teledyne Electronics**  
 HARRISBURG, PA 17105-3008

DESCRIPTION: PLUG ASSEMBLY  
 AMPLIMITE 8CS  
 COAX. MAX. SIZE 4

SIZE: A1  
 DATE: 00779  
 DRAWING NO: 446405

CUSTOMER DRAWING: YES  
 SHEET: 1 OF 1