

4

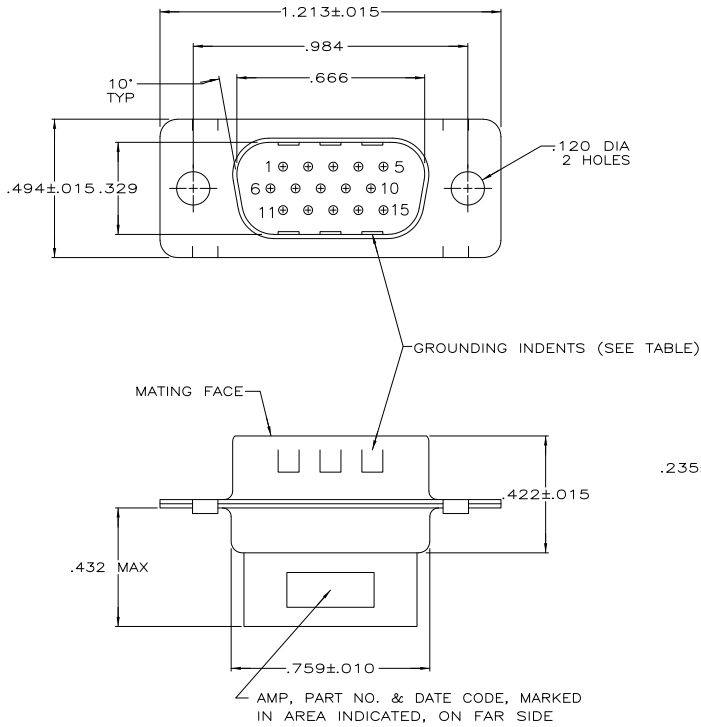
3

2

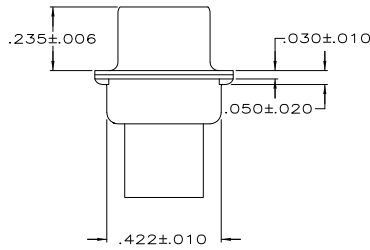
1

THIS DRAWING IS UNPUBLISHED. RELEASED FOR PUBLICATION  
 © COPYRIGHT - By - ALL RIGHTS RESERVED.

LOC	DIST	REVISIONS			
P	LR	DESCRIPTION	DATE	BY	APPD
BD	48	H1	REVISED PER ECO-11-004835	11MAR11	RK HMR



- CONNECTOR ACCEPTS SIZE 22 DF PIN CONTACTS, RETENTION TINES ARE AN INTEGRAL PART OF INSERT.
- MATERIAL: MOLDED PARTS - FLAME RETARDANT, 94V-0 RATED, GLASS FILLED NYLON, BLACK. SHELLS - STEEL PER ASTM A109.
- FINISH: SHELLS - TIN OR TIN-LEAD PLATED PER MIL-T-10727.
- FINISH: SHELLS - TIN PLATED PER MIL-T-10727 OVER COPPER PER MIL-C-14550.
- 748364-5 IS FOR AMP THAILAND. PART HAS CIRCUIT HOLE #9 BLOCKED.



SUPERSEDED BY 748364-1	STANDARD	△	YES	△ 748364-5
SUPERSEDED BY 748364-1	SMALL PACK	△	YES	748364-4
OBSOLETE	STANDARD	△	NO	748364-2
	STANDARD	△	YES	748364-1
	PACKAGING TYPE		SHELL FINISH	GROUNDING INDENTS
				PART NUMBER

THIS DRAWING IS A CONTROLLED DOCUMENT.		DRN	C. RICHARD	12-3-06		TE Connectivity
DIMENSIONS: INCHES		OK	S. WELDON	12-4-06		PLUG CONNECTOR, SIZE 1, 15 POSITION, AMPLIMITE™ HDP-22
TOLERANCES UNLESS OTHERWISE SPECIFIED:		APPD	L. BREKOSKY	12-4-06		
0 PLC ± .005		NAME				RESTRICTED TO
1 PLC ± .005		APPLICATION SPEC			SIZE	CAGE CODE
2 PLC ± .005		WEIGHT			A2	00779
3 PLC ± .005					C=	748364
4 PLC ± .005					CUSTOMER DRAWING	SCALE
ANGLES ± .2°						4:1
MATERIAL FINISH						SHEET
SEE TABLE						1 of 1
						REV
						H1

1471-9 (3/11)

748364

A