

4

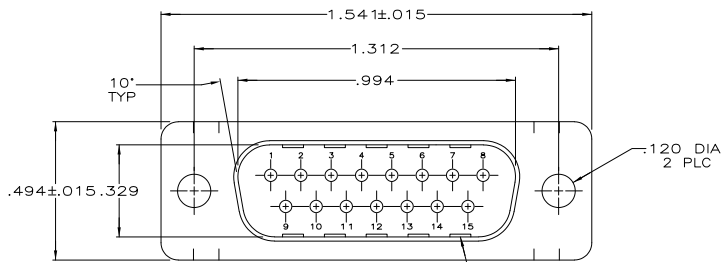
3

2

1

THIS DRAWING IS UNPUBLISHED. RELEASED FOR PUBLICATION
 © COPYRIGHT - By - ALL RIGHTS RESERVED.

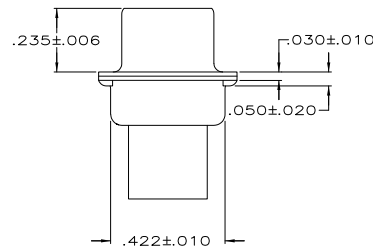
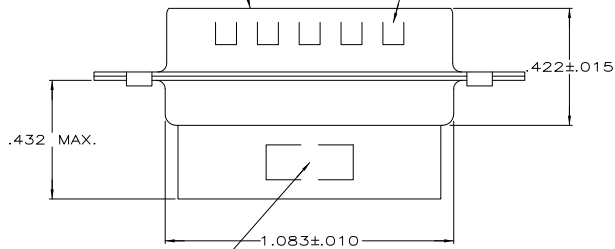
LOC		DIBT		REVISIONS			
P	LTR	DESCRIPTION	DATE	BY	APPD		
GP	00						
	K3	REVISED PER ECO-11-004835	11MAR11	RK	HMR		



- CONNECTOR ACCEPTS SIZE 20 DF PIN CONTACTS, RETENTION TINES ARE AN INTEGRAL PART OF INSERT.
 - CONNECTOR COMPLIES WITH 108-40005 WHERE APPLICABLE.
- ▲ NYLON, FLAME RETARDANT, 94V-0 RATED, GLASS FILLED, BLACK.
 - ▲ STEEL PER ASTM A109.
 - ▲ ZINC PLATED PER ASTM B633; TYPE II; CLASS SC1; YELLOW CHROMATE.
 - ▲ TIN OR TIN-LEAD PLATED OVER COPPER UNDERPLATE.
 - ▲ TIN PLATED OVER COPPER UNDERPLATE.
 - ▲ ZINC PLATED .000200-.000400 THICK, YELLOW TRIVALENT CHROMIUM CHROMATE COATING.

GROUNDING INDENTS
SEE TABLE

MATING FACE



	STANDARD	▲	NO	205206-9
	STANDARD	▲	NO	205206-8
OBSOLETE	SMALL PACK	▲	NO	205206-6
	STANDARD	▲	YES	205206-3
OBSOLETE	STANDARD	▲	NO	205206-2
OBSOLETE	STANDARD	▲	NO	205206-1
	PACKAGING TYPE		SHELL FINISH	GROUNDING INDENTS
				PART NUMBER

THIS DRAWING IS A CONTROLLED DOCUMENT.		DR	S. WELDON	7-19-85	 TE Connectivity				
DIMENSIONS:		OK	J. GERACE	7-28-85					
INCHES		APD	V. KUMAR	7-31-85					
0 PLC ± . - 1 PLC ± . - 2 PLC ± . - 3 PLC ± .005 4 PLC ± . ± . ANGLES ± . ± . FINISH		PRODUCT SPEC APPLICATION SPEC WEIGHT		SIZE A2	CASE CODE C-205206	DRAWING NO. 00779	RESTRICTED TO -		
MATERIAL MOLDED PARTS: ▲ SHELLS: SEE TABLE		CUSTOMER DRAWING		SCALE	NTS	SHEET	1 of 1	REV	K3

1471-9 (3/11)

205206

A