

4

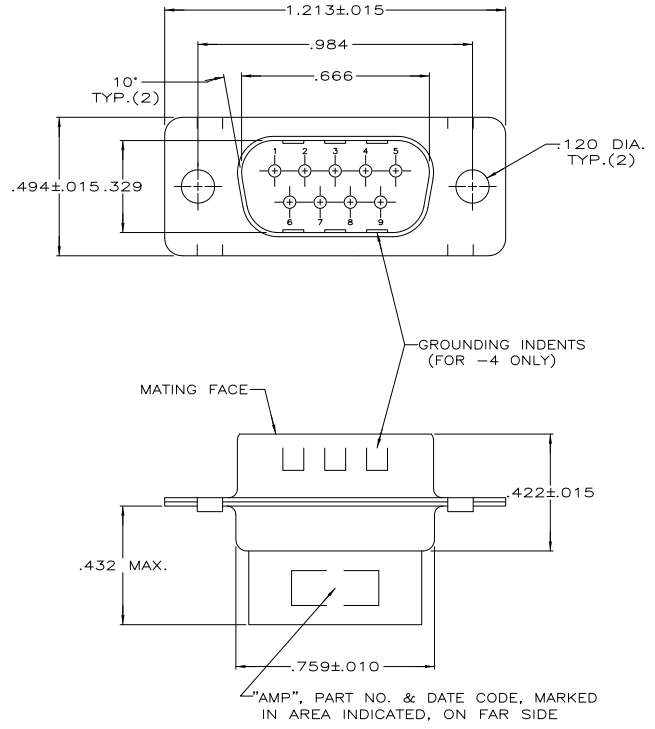
3

2

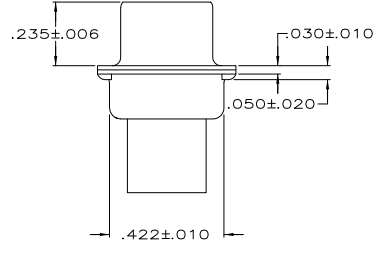
1

THIS DRAWING IS UNPUBLISHED. RELEASED FOR PUBLICATION. ALL RIGHTS RESERVED.

LOC		DIBT		REVISIONS			
P	LTR	DESCRIPTION	DATE	BY	APPD		
GP	00						
	K3	REVISED PER ECO-11-004835	11MAR11	RK	HMR		



- CONNECTOR ACCEPTS SIZE 20 DF PIN CONTACTS, RETENTION TINES ARE AN INTEGRAL PART OF INSERT.
  - CONNECTOR COMPLIES WITH 108-40005 WHERE APPLICABLE.
- ⚠ MOLDED PARTS: NYLON, FLAME RETARDANT, 94V-0 RATED, GLASS FILLED, BLACK.
  - ⚠ SHELLS: STEEL PER ASTM A109.
  - ⚠ ZINC PLATED PER ASTM B633; TYPE II; CLASS SC1; YELLOW CHROMATE.
  - ⚠ TIN OR TIN-LEAD PLATED OVER COPPER UNDERPLATE.
  - ⚠ CHROME PLATED.
  - ⚠ TIN PLATED OVER COPPER UNDERPLATE.
  - ⚠ ZINC PLATED .000200-.000400 THICK, YELLOW TRIVALENT CHROMIUM CHROMATE COATING.
  - ⚠ OBSOLETE PARTS: OBSOLETE CIS STREAMLINING PER D.RENAUD/D.SINISI



OBsolete	PACKAGING TYPE	SHELL FINISH	GROUNDING INDENTS	PART NUMBER
⚠	SMALL PACK	⚠	NO	1-205204-0
	STANDARD	⚠	NO	205204-9
	STANDARD	⚠	NO	205204-8
SUPERSEDED BY 205204-9	SMALL PACK	⚠	NO	205204-7
	STANDARD	⚠	YES	205204-4
SUPERSEDED BY 205204-9	STANDARD	⚠	NO	205204-3
OBsolete	STANDARD	⚠	NO	205204-2
SUPERSEDED BY 205204-9	STANDARD	⚠	NO	205204-1

THIS DRAWING IS A CONTROLLED DOCUMENT.

DIMENSIONS: INCHES 0 PLG ± .005 1 PLG ± .005 2 PLG ± .005 3 PLG ± .005 4 PLG ± .005 ANGLES ± .5°	DIM. S. WELDON 07/19/85 OK J. GERACE 07/22/85 NAME PRODUCT SPEC APPLICATION SPEC WEIGHT FINISH SHELLS: SEE TABLE	TE Connectivity PLUG CONNECTOR, SIZE 1, 9 POS., AMPLIMITE HDP SIZE: A2 CASE CODE: 00779 DRAWING NO: C-205204 RESTRICTED TO: K3 SCALE: NTS SHEET: 1 of 1
---	---	--

CUSTOMER DRAWING