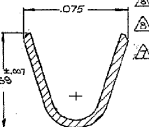
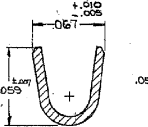
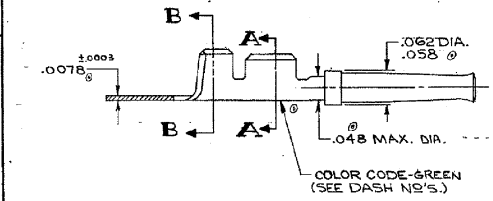
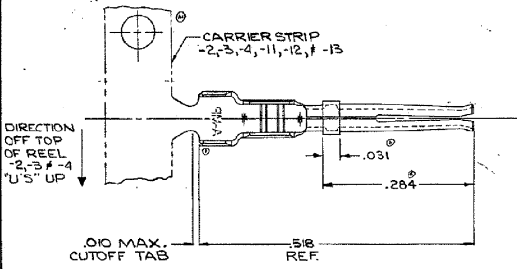


DRAWING MADE IN AMERICAN PROJECTION

© 1971 AMP INCORPORATED. ALL RIGHTS RESERVED. AMP PRODUCTS COVERED BY PATENTS AND/OR PATENTS PENDING.

REV	DATE	DESCRIPTION	APPROVED
M	6-7-72	083-1-2 PER ECN 804171	JG
M	7-19-74	083-8 PER EC 0080-781-92	JG
P	7-20-74	083-2 PER EC 0410-025-00	JG
R		SUPERSEDED -9 PER EC 0410-0226-00	JG



- 1. WIRE RANGE .22-28 AWG.
- 2. INSULATION RANGE .030-.040.
- 3. WILL ACCEPT (2) #28 GA. WIRES.
- 4. ENGAGEMENT FORCE MAX. OF 12 OZ. W/.031 DIA. PIN PER MS3197-22Y1 AND WITHDRAWAL FORCE OF 0.2 OZ. W/.029 DIA. PIN PER MS3197-22X1 AFTER CONDITIONING.

- △ -4 SUPERSEDED BY -3
- △ 1-0 SUPERSEDED BY -9
- △ 1-3 SUPERSEDED BY 1-2
- △ OBSOLETE PART NUMBER
- △ -9 SUPERSEDED BY -3

- 1.D. ACCOMMODATES .030±.001 DIA. PIN CONTACT
- △ 66493-2 1. AS SHOWN.
2. PLATED 000050 GOLD OVER .000050 NICKEL.
 - 66493-3 1. SAME AS -2 EXCEPT:
2. PLATED SEL. 000030 GOLD PER MIL-G-45204 FOR 150/100 LENGTH FROM MATING END WITH REMAINDER OF CONTACT GOLD FLASHED PER MIL-G-45204. ENTIRE CONTACT UNDER-PLATED WITH 000050 NICKEL PER QQ-N-290.
 - △ 66493-4 1. SAME AS -2 EXCEPT:
2. PLATED GOLD FLASH PER MIL-G-45204 OVER .000050 NICKEL PER QQ-N-290.
 - △ 66493-8 1. SAME AS -2 EXCEPT:
2. LOOSE PIECE. COLOR CODED GREEN.
 - △ 66493-9 1. SAME AS -3 EXCEPT:
2. LOOSE PIECE. COLOR CODED GREEN.
 - △ 66493-0 1. SAME AS -4 EXCEPT:
2. LOOSE PIECE. COLOR CODED GREEN.
 - △ 1-66493-1 1. SAME AS -2 EXCEPT:
2. REVERSE REEL.
 - △ 1-66493-2 1. SAME AS -3 EXCEPT:
2. REVERSE REEL.
 - △ 1-66493-3 1. SAME AS -4 EXCEPT:
2. REVERSE REEL.

UNLESS OTHERWISE SPECIFIED, DIMENSIONS ARE IN INCHES TOLERANCES UNLESS INDICATED OTHERWISE		AMP INCORPORATED HARRISBURG, PENNSYLVANIA	
MATERIAL COPPER ALLOY PER QQ-B-150		CONTACT SOCKET, SIZE 22, OPEN BARREL	
CONTRACT NO.	DATE	SIZE	NUMBER
	6/24/72	C	00779 66493
OTHER APP'D		SCALE	SHEET 1 OF 1
		10	

CUSTOMER DRAWING

AMP 1271-1 REV 15-A