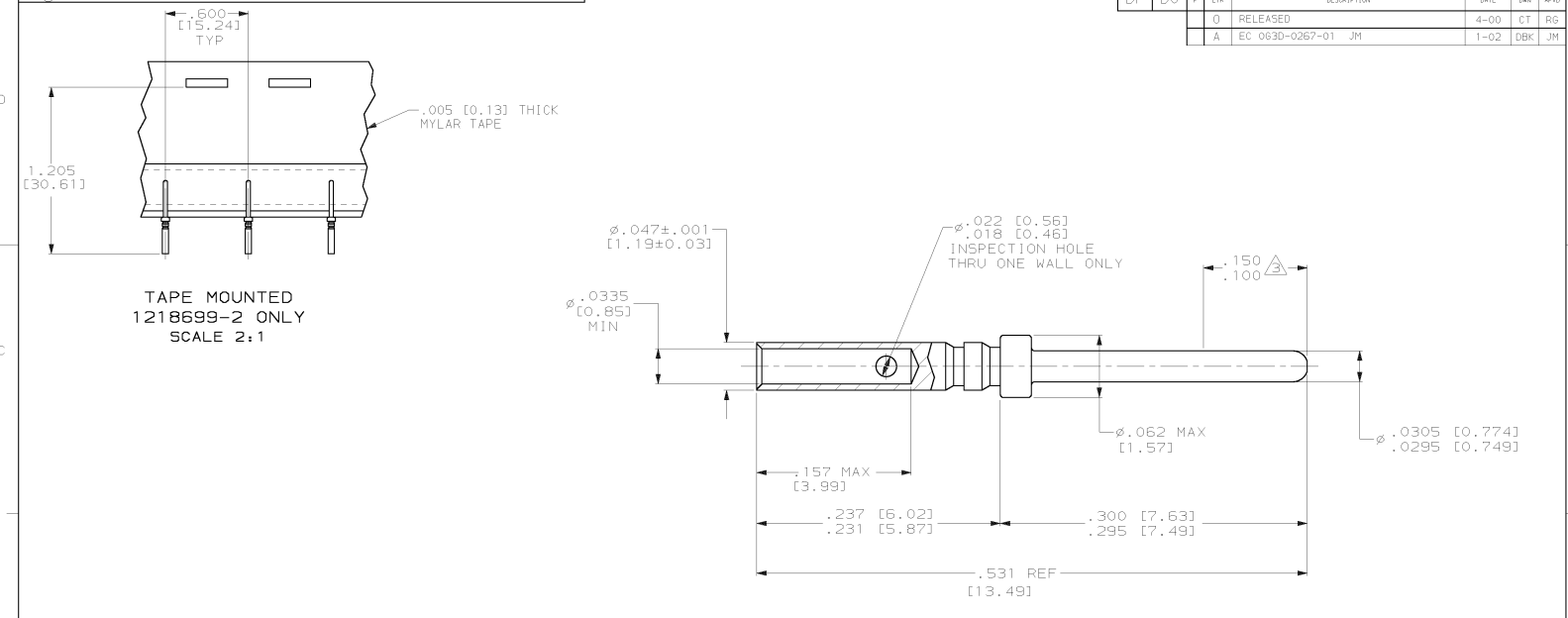


LOC	DIST	REVISIONS					
DF	DO	F	LTR	DESCRIPTION	DATE	ENR	APPD
		0		RELEASED	4-00	CT	RS
		A		EC 063D-0267-01 JM	1-02	DBK	JM



TAPE MOUNTED  
1218699-2 ONLY  
SCALE 2:1

- MATERIAL: BRASS PER ASTM-C34500.
- FINISH: GOLD PLATED .000050 [0.00127] MIN THICK OVER NICKEL PLATE .000050 [0.00127] MIN THICK.
- POINT OF PLATING THICKNESS MEASUREMENT.
- WIRE BARREL WILL ACCEPT #22-28 AWG WIRE.
- CRIMPING TOOL; USE MS3198-1 WITH APPLICABLE POSITIONER.
- INSERTION/EXTRACTION TOLL; AMP PART NO. 91067-1.
- FINISH: GOLD PLATED .000030 MIN THK OVER NICKEL UNDERPLATE .000050 MIN THK

△	LOOSE PIECE	1218699-3
△	ON TAPE	1218699-2
△	LOOSE PIECE	1218699-1
FINISH	DESCRIPTION	PART NUMBER

THIS DRAWING IS A CONTROLLED DOCUMENT.		DN C. C. THOMAS	4/17/00	<b>AMP</b> AMP Incorporated Harrisburg, PA 17105-3608
DIMENSIONS: INCHES (mm)		CHK S. GROSS	4/17/00	
TOLERANCES UNLESS OTHERWISE SPECIFIED:		APPD S. GROSS	4/17/00	NAME
Ø	PLC	±		PRODUCT SPEC
Ø	PLC	±		APPLICATION SPEC
Ø	PLC	±		REPRINT
Ø	PLC	±		CUSTOMER DRAWING
Ø	PLC	±		SCALE
Ø	PLC	±		SHEET
Ø	PLC	±		REV
Ø	PLC	±		A