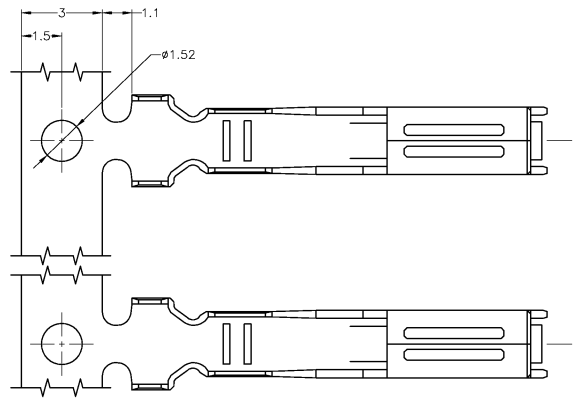
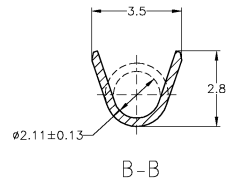
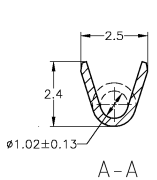
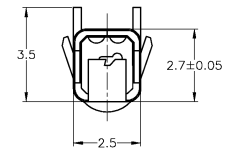
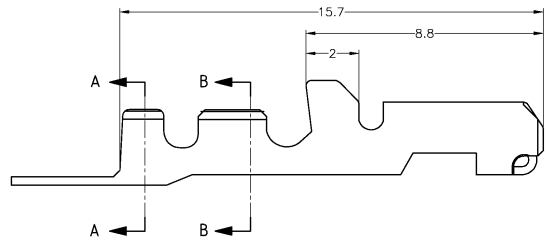


THIS DRAWING IS UNPUBLISHED.  
 特許権 特許権  
 BY TYCO ELECTRONICS CORPORATION. ALL RIGHTS RESERVED.

| LOC | DIST | REV | DATE    | BY | APP |
|-----|------|-----|---------|----|-----|
| J   |      |     |         |    |     |
|     |      | C1  | 14JAN03 | TS | KB  |



- △ FINISH: 0.00250 MIN THK BRIGHT TIN OVER  
0.00040 MIN THK COPPER
- 2. DESIGNED TO MATE WITH 1.50 x 0.82 TIN PLATE BLADE
- 3. WIRE RANGE: 22-18 AWG  
INSULATION DIAMETER RANGE: 1.1-2.25



776001-1  
PART NUMBER

|  |  |                           |          |   |
|--|--|---------------------------|----------|---|
| THIS DRAWING IS A CONTROLLED DOCUMENT.         |  | DR<br>T. SHINOHARA        | 14JAN03  | Tyco Electronics AMP K.K.<br>Kawasaki, Japan      |
| DIMENSIONS<br>寸法                               |  | CHK<br>K. BETSUJI         | 14JAN03  |   |
| TOLERANCES UNLESS OTHERWISE SPECIFIED.<br>寸法公差 |  | PROJ. SPEC.<br>製品規格       | 108-1452 | RECEPTACLE TERMINAL<br>1.5MM SERIES OBD CONNECTOR |
| MATERIAL<br>材料                                 |  | APPLICATION SPEC.<br>製品規格 | 114-2136 | SIZE DATE CODE DRAWING NO.<br>A2 00779 776001     |
| FINISH<br>仕上                                   |  | WEIGHT                    |          | RESTRICTED TO<br>C1                               |
|  |  | CUSTOMER DRAWING          |          | SCALE 10:1 SHEET 1 OF 1 REV C1                    |

776001