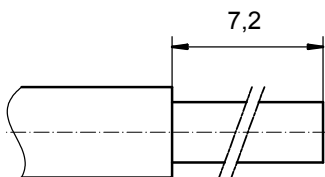


STRIPPING DIMENSIONS



Directive 2002/95/EC
RoHS Compliant

NOTES:

CRIMPING:
USE CRIMP TOOL: 360X10409X
WITH TOOL INSERT: 36-000060
SELECTOR SETTINGS: 7 FOR AWG 10
6 FOR AWG 12

item	quantity	part description	material	plating
3	1	REAR SIDE	COPPER ALLOY	min. 8µin HARD GOLD over min. 50µin NICKEL
2	1	RETAINING RING	COPPER ALLOY	NICKEL PLATED
1	1	MATING SIDE	COPPER ALLOY	min. 30µin HARD GOLD over min. 50µin NICKEL

partlist		tolerance	dim. in mm	scale:
		ISO 2768-m		8:1
		date	name	material:
		03.01.08	Schmidt	see partlist
		appd.	Koch	title:
		03.01.08		HIGH POWER CONTACT FEMALE
		norm		CRIMP VERSION 30A
		d-old		D-SUB COMBINATION
		a	Origin	dwg no:
		rev.	description	Inventor 10
		date	name	13K1A2379
				DIN-A3
				sh: 1
				part no:
				13-000311

APPROVAL # FREIGABE # DEBLOCAGE # AUTORIZACION # APPROVAL

CUSTOMER APPROVAL DATE:

NAME: TITLE:

COMPANY NAME:

APPROVAL # FREIGABE # DEBLOCAGE # AUTORIZACION # APPROVAL

THIS DRAWING MAY NOT BE COPIED OR REPRODUCED IN ANY WAY, AND MAY NOT BE PASSED ON TO A THIRD PARTY WITHOUT WRITTEN PERMISSION. OWNERSHIP AND COPYRIGHT OF CONEC GmbH. DO NOT ALTER CAD DRAWING BY HAND

