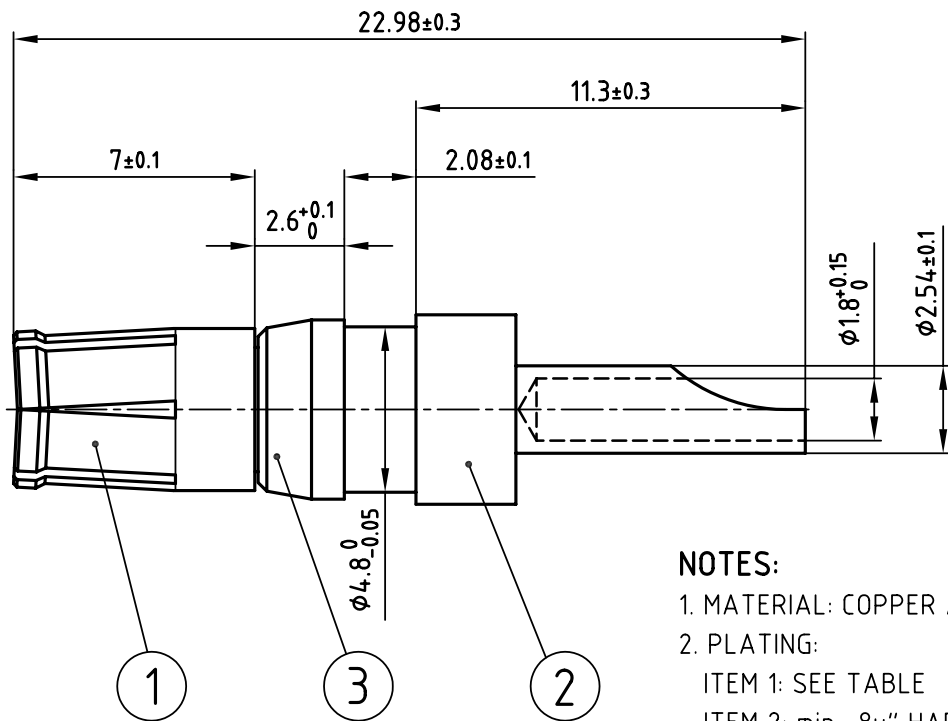
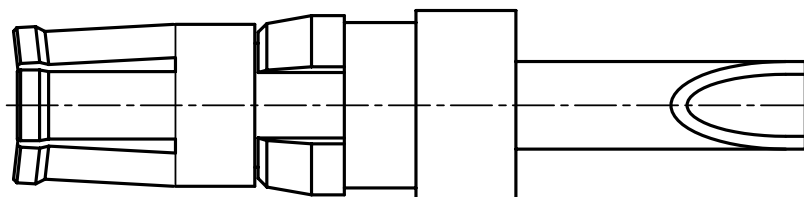


used for: D-SUB COMBINATION



**NOTES:**

- 1. MATERIAL: COPPER ALLOY
- 2. PLATING:  
ITEM 1: SEE TABLE  
ITEM 2: min. 8µ" HARD GOLD  
OVER min. 50µ" NICKEL  
ITEM 3: NICKEL PLATED



Plating item 1	Part-NO. CONEC
min. 30µ" HARD GOLD OVER min. 50µ" NICKEL	132C10019X
min. 50µ" HARD GOLD OVER min. 50µ" NICKEL	132J10019X



THIS DRAWING MAY NOT BE COPIED OR REPRODUCED IN ANY WAY, AND MAY NOT BE PASSED ON TO A THIRD PARTY WITHOUT WRITTEN PERMISSION.  
 OWNERSHIP AND COPYRIGHT OF CONEC GmbH  
 DO NOT ALTER CAD DRAWING BY HAND

tolerance		ISO 2768-m			
1998	date	name			
drawn	23.03.	Barcinski			
appd.	23.03.	Mickenbecker			
norm					
d-old	SK211H10				
rev.	description	date	name		

scale:	5:1		
material:	SEE NOTES		
title:	<b>HIGH POWER CONTACT FEMALE</b> SOLDER CUP 10A D-SUB COMBINATION		
dwg no:	CAD/ REL.13	DIN-A	
	13K11E3A	4	
		sh: 1/1	
product no:	SEE TABLE		

4

3

2

1