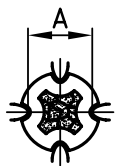
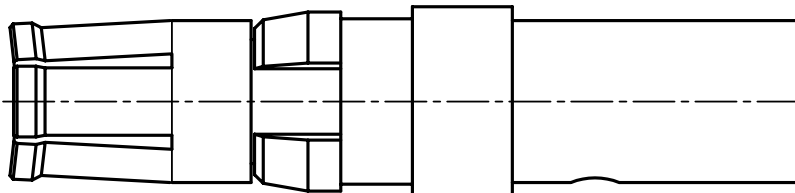
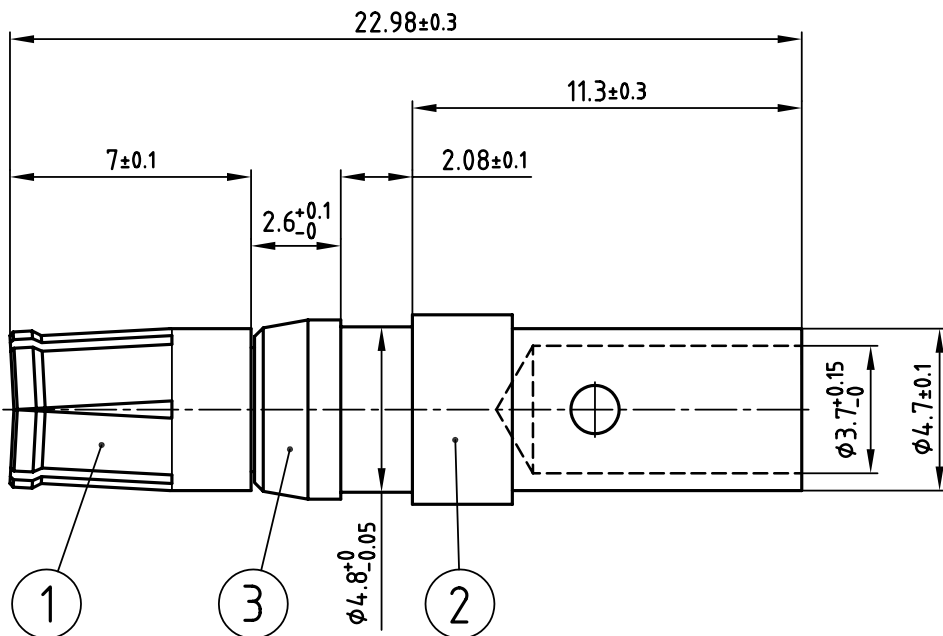


used for: D-SUB COMBINATION

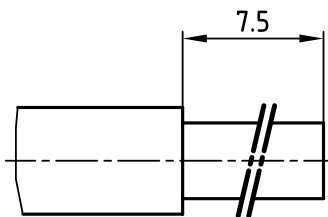


Selector settings	Crimp height A
7 for AWG 10	2.19 - 2.41
6 for AWG 12	1.94 - 2.05



Directive 2002/95/EC
"RoHS"
Compliant

(b) STRIPPING DIMENSIONS



NOTES:

1. MATERIAL: COPPER ALLOY
2. PLATING:
ITEM 1: min. 30µ" HARD GOLD OVER min. 50µ" NICKEL
ITEM 2: min. 8µ" HARD GOLD OVER min. 50µ" NICKEL
ITEM 3: NICKEL PLATED
- (b) 3. CRIMPING: USE CRIMP TOOL 360X10409X WITH TOOL INSERT 360X20029X
SELECTOR SETTINGS: 7 FOR AWG 10; 6 FOR AWG 12

THIS DRAWING MAY NOT BE COPIED OR REPRODUCED IN ANY WAY, AND MAY NOT BE PASSED ON TO A THIRD PARTY WITHOUT WRITTEN PERMISSION.
 OWNERSHIP AND COPYRIGHT OF CONEC GmbH
 DO NOT ALTER CAD DRAWING BY HAND

tolerance		scale:	
		5:1	
		material: SEE NOTES	
		title:	
		HIGH POWER CONTACT FEMALE CRIMP VERSION 30A D-SUB COMBINATION	
		dwg no: AutoCAD/REL.13 DIN-A	
		4	
		sh: 1/1	
		part no: 132C11039X	

