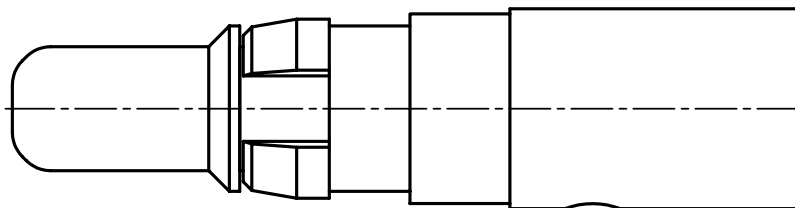
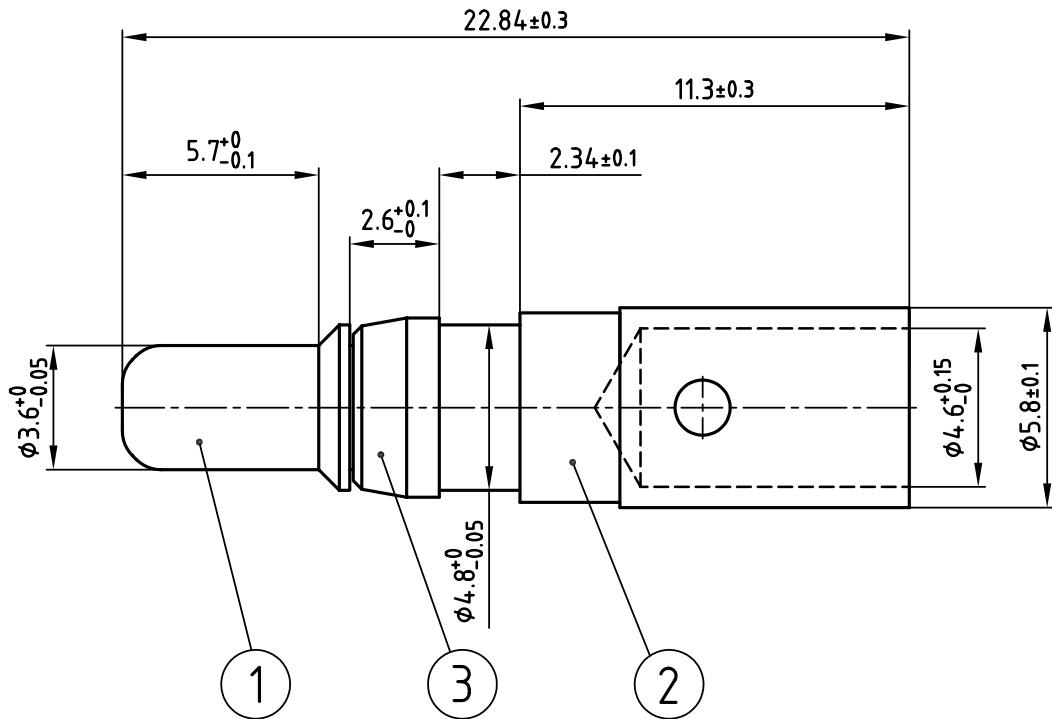


used for: D-SUB COMBINATION



NOTES:

- 1. MATERIAL: COPPER ALLOY
- 2. PLATING:
 - ITEM 1: SEE TABLE
 - ITEM 2: min. 8µ" HARD GOLD OVER min. 50µ" NICKEL
 - ITEM 3: NICKEL PLATED

PLATING ITEM 1	PART-NO.
30µ" HARD GOLD OVER min. 50µ" NICKEL	131C11049X
50µ" HARD GOLD OVER min. 50µ" NICKEL	131J11049X



THIS DRAWING MAY NOT BE COPIED OR REPRODUCED IN ANY WAY, AND MAY NOT BE PASSED ON TO A THIRD PARTY WITHOUT WRITTEN PERMISSION. OWNERSHIP AND COPYRIGHT OF CONEC GmbH DO NOT ALTER CAD DRAWING BY HAND

tolerance				ISO 2768-m																							
1998	date	name		<table border="1"> <tr> <td>drawn</td> <td>23.03.</td> <td colspan="2">Barcinski</td> </tr> <tr> <td>appd.</td> <td>23.03.</td> <td colspan="2">Mickenbecker</td> </tr> <tr> <td>norm</td> <td colspan="3"></td> </tr> <tr> <td>d-old</td> <td colspan="3"></td> </tr> <tr> <td>rev.</td> <td>description</td> <td>date</td> <td>name</td> </tr> </table>				drawn	23.03.	Barcinski		appd.	23.03.	Mickenbecker		norm				d-old				rev.	description	date	name
drawn	23.03.	Barcinski																									
appd.	23.03.	Mickenbecker																									
norm																											
d-old																											
rev.	description	date	name																								

scale:	5:1		
material:	SEE NOTES		
title:	HIGH POWER CONTACT MALE CRIMP VERSION 40A D-SUB COMBINATION		
dwg no:	CAD/ REL.14	DIN-A	
	13K11D4A	4	
		sh: 1/1	
product no:	SEE TABLE		

4 3 2 1