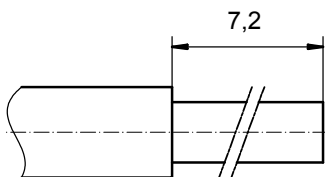


STRIPPING DIMENSIONS



Directive 2002/95/EC
RoHS
Compliant

NOTES:

CRIMPING:
USE CRIMP TOOL: 360X10409X
WITH TOOL INSERT: 36-000060
SELECTOR SETTINGS: 3 FOR AWG 16
2 FOR AWG 18
2 FOR AWG 20

item	quantity	part description	material	plating
3	1	REAR SIDE	COPPER ALLOY	min. 8µin HARD GOLD over min. 50µin NICKEL
2	1	RETAINING RING	COPPER ALLOY	NICKEL PLATED
1	1	MATING SIDE	COPPER ALLOY	min. 30µin HARD GOLD over min. 50µin NICKEL

APPROVAL # FREIGABE # DEBLOCAGE # AUTORIZACION # APPROVAL

CUSTOMER APPROVAL DATE:

NAME: TITLE:

COMPANY NAME:

APPROVAL # FREIGABE # DEBLOCAGE # AUTORIZACION # APPROVAL

rev.	description	date	name
a	Origin		

tolerance ISO 2768-m

dim. in mm

scale: 8:1

material: see partlist

title: HIGH POWER CONTACT FEMALE
CRIMP VERSION 10A
D-SUB COMBINATION

dwg no: Inventor 10

13K1A2381

part no: 13-000291

DIN-A3 sh: 1

