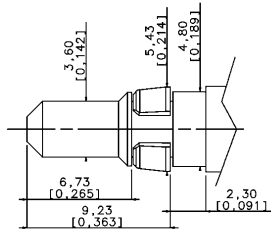
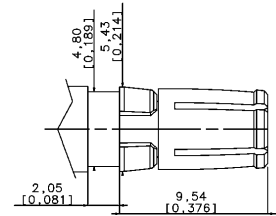


MATERIAL

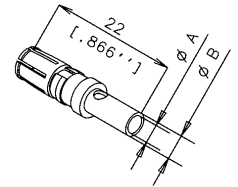
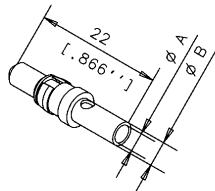
PIN CONTACT Cu Zn
 SOCKET CONTACT Cu Ni
 RETAINING CLIP Thermoplastic
 SURFACE PLATING Au = 0.5 um



HIGH POWER PLUG



HIGH POWER JACK

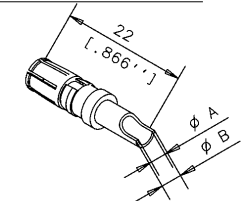
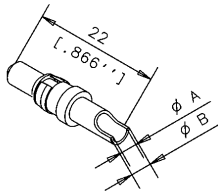


CRIMP VERSION VERSION A SERTIR

	CURRENT PUISSANCE	ϕA	ϕB		
4W540 30R	L17DM53745-208 10A	1.8	2.55	L17DM53744-207	4W550 30R
4W540 20R	L17DM53745-207 20A	2.8	3.7	L17DM53744-206	4W052 16P
4W042 36P	L17DM53745-204 30A	3.76	4.7	L17DM53744-204	4W052 36P
4W540 00R	L17DM53745-201 40A	4.8	5.6	L17DM53744-201	4W052 06P

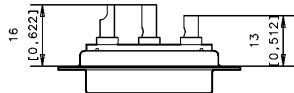
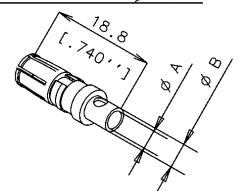
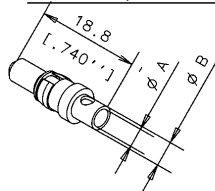
SOLDER VERSION VERSION A SOUDER

	CURRENT PUISSANCE	ϕA	ϕB		
4W040 30C	L17DM53745-8 10A	1.8	2.55	L17DM53744-7	4W050 30C
4W040 20C	L17DM53745-7 20A	2.8	3.7	L17DM53744-6	4W050 20C
4W040 00C	L17DM53745-1 40A	4.8	5.6	L17DM53744-1	4W050 00C



CRIMP SHORT VERSION VERSION COURTE A SERTIR

	CURRENT PUISSANCE	ϕA	ϕB		
4W042 29R	L17DM53745-218 10A	1.8	2.55	L17DM53744-217	4W050 29R
4W042 19R	L17DM53745-217 20A	2.8	3.7	L17DM53744-216	NC
NC	L17DM53745-211 40A	4.8	5.6	L17DM53744-211	NC



		TOL. GEN.		Amphenol Socapex	
		VOLUME PIECE		Usine de Dole	
		SURFACE PIECE			
		PROTECTION			
<input checked="" type="checkbox"/>	conform to RoHS	Vallet	23/12		
<input checked="" type="checkbox"/>	DM 05 23 010		05		
<input checked="" type="checkbox"/>	RETAINING CLIP	Quere	24/10		
<input checked="" type="checkbox"/>	thermoplastic		2004		
<input checked="" type="checkbox"/>	CREATION PLAN	Quere	19/10		
<input checked="" type="checkbox"/>			95		
IND.	MODIFICATIONS	EXEC.	DATE	Approb	
DATE DU TIRAGE	DESIGNATION				
HIGH POWER CONTACTS 0,5 Au					
<small>COMMUNICATION ET UTILISATION INTERDITES SAUF AUTORISATION</small>					