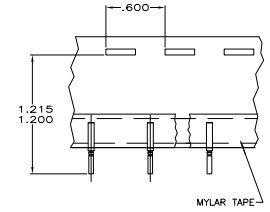
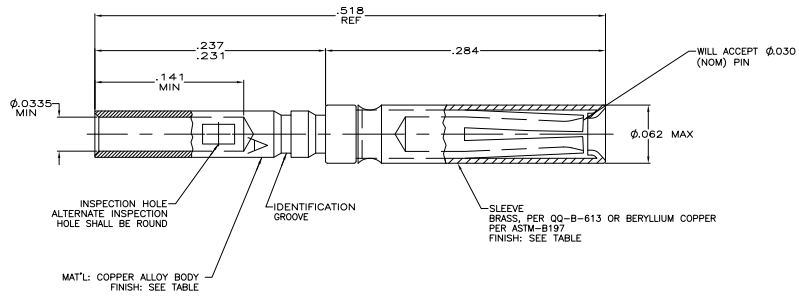


REV	DATE	DESCRIPTION	BY	APP
1	11MAR11	REVISED PER EDD-11-005030	HT	RK/HMR



TAPE MOUNTED
 -2 ONLY

1. WIRE BARREL WILL ACCEPT #28-28 AWG WIRE.
2. CRIMPING TOOL - USE HAND TOOL M22520/2-01 (AMP P/N 601966-1) WITH POSITIONER M22520/2-06 (AMP P/N 601966-4). SEE AMP INSTRUCTION SHEET, IS7516, FOR CRIMPING INSTRUCTIONS.
3. CONTACT QUALIFIED TO NASA P/N G-08-S1.
4. INSERTION/EXTRACTION TOOL AMP P/N 91067-1.
5. USE AMP - TAPEMATIC STRIPPER/CRIMPER MACHINE NUMBER 599406-7 WITH FUNNEL NUMBER 125905-2.
6. SLEEVE MAY BE CRIMPED OR DIMPLED TO BODY.
7. PLATING: GOLD PER ASTM-B-488 (TYPEII) OVER NICKEL PER QQ-N-290.
8. PLATING: GOLD PER ASTM-B-488 (TYPEII) OVER COPPER PER MIL-C-14550, CLASS 4.

REV	DATE	DESCRIPTION	BY	APP
1	06-03-91	AS SHOWN	HT	206071-4
2	06-03-91	CONTACT ON TAPE	HT	206071-2
3	06-03-91	AS SHOWN	HT	206071-1
4	06-03-91	FINISH	HT	206071-1

REMARKS: DESCRIPTION FINISH PART NO.

THIS DRAWING IS A CONTROLLED DOCUMENT. DATE: 06-03-91
 OF: HANSEY DATE: 06-03-91
 BY: HANSEY DATE: 06-03-91
 CHECKED BY: HANSEY DATE: 06-03-91
 APPROVED BY: HANSEY DATE: 06-03-91

TE Connectivity
 CONTACT ASSEMBLY, SOCKET, SIZE 220

UNLESS OTHERWISE SPECIFIED: DIMENSIONS ARE IN INCHES
 UNLESS OTHERWISE SPECIFIED: DIMENSIONS ARE IN MILLIMETERS
 UNLESS OTHERWISE SPECIFIED: DIMENSIONS ARE IN MILLIMETERS
 UNLESS OTHERWISE SPECIFIED: DIMENSIONS ARE IN MILLIMETERS

WEIGHT: 102 GRAMS
 PART NO: A100779
 DRAWING NO: 206071
 CUSTOMER DRAWING: YES