

4

3

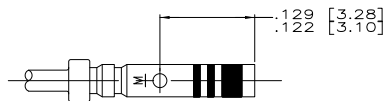
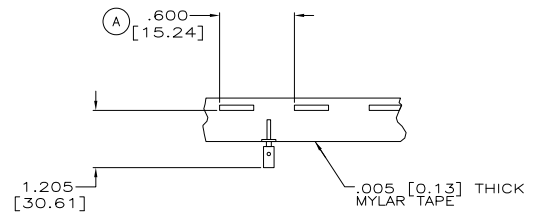
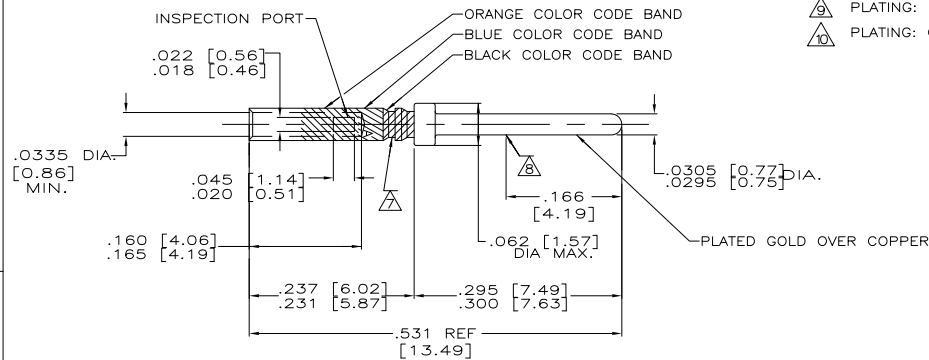
2

1

THIS DRAWING IS UNPUBLISHED. RELEASED FOR PUBLICATION
 BY TYCO ELECTRONICS CORPORATION. ALL INTERNATIONAL RIGHTS RESERVED.

LOC	DIST	REVISIONS			
P	LR	DESCRIPTION	DATE	DR	APPD
P		REV PER ECO-09-015482	09JUL09	PY	RL

1. WIRE BARREL WILL ACCEPT #22-28 AWG WIRE.
 2. CRIMPING TOOL- USE MS3198-1 WITH APPLICABLE POSITIONER.
 3. CONTACT CONFORMS TO MIL-C-39029/58, SIZE 22. & MS27493-22D.
 4. NET WEIGHT- .072 GRAMS.
 5. INSERTION, EXTRACTION TOOL- AMP P/N 91067-1.
- △ THIS CONTACT IDENTIFIED AS MS27493-22D SUPERSEDES M24308/13-1.
 △ IDENTIFICATION GROOVE IS OPTIONAL.
 △ POINT OF PLATING THICKNESS MEASUREMENT.
 △ PLATING: GOLD PER MIL-G-45205 OVER NICKEL PER QQ-N-290.
 △ PLATING: GOLD PER MIL-G-45204 OVER COPPER PER MIL-C-14550



ALTERNATE CONFIGURATION

AS SHOWN	△	1-204370-3
CONTACTS ON TAPE WITH COLOR CODE	SAME AS -3	1-204370-2
WITHOUT COLOR CODE	△	204370-8
CONTACTS ON TAPE	SAME AS -2	204370-5
AS SHOWN	△	204370-2
DESCRIPTION	PLATING	PART NO.

WHEN ORDERING CONTACT ON TAPE, ORDER BY THE TAPE NUMBER PLUS THE PACKAGING CODE AS FOLLOWS:

2. FOR USE WITH AMP TAPETRONIC, PNEUMATIC TOOL-
 A. 1000 PARTS TO A BOX ADD PACKAGING CODE: 1MBOX
3. FOR USE WITH 4/8 INDENT STRIPPER CRIMPER-
 A. 1000 PARTS TO A REEL ADD PACKAGING CODE: 1MREEL
 B. 5000 PARTS TO A REEL ADD PACKAGING CODE: 5MREEL

THIS DRAWING IS A CONTROLLED DOCUMENT.		DATE	BY	APPD	REV	DESCRIPTION	DATE	BY	APPD	REV	DESCRIPTION
DOWNSHIFT UNLESS OTHERWISE SPECIFIED:		10-3-90	B. RINEHART				10-15-90	A. EMADI			
DIMENSIONS:		INCHES		MILLIMETERS		APPLICABLE SPEC		SIZE		CASE CODE	
0 P/C	± .005	± .005		± .005		A2		00779		C=204370	
1 P/C	± .005	± .005		± .005		A2		00779		C=204370	
2 P/C	± .005	± .005		± .005		A2		00779		C=204370	
3 P/C	± .005	± .005		± .005		A2		00779		C=204370	
4 P/C	± .005	± .005		± .005		A2		00779		C=204370	
5 P/C	± .005	± .005		± .005		A2		00779		C=204370	
6 P/C	± .005	± .005		± .005		A2		00779		C=204370	
7 P/C	± .005	± .005		± .005		A2		00779		C=204370	
8 P/C	± .005	± .005		± .005		A2		00779		C=204370	
9 P/C	± .005	± .005		± .005		A2		00779		C=204370	
10 P/C	± .005	± .005		± .005		A2		00779		C=204370	
MATERIAL	FINISH	WEIGHT		SCALE		CUSTOMER DRAWING		SCALE		SHEET	
				10:1				1 of 1		REV P	

1471-B (1/98)

204370

A