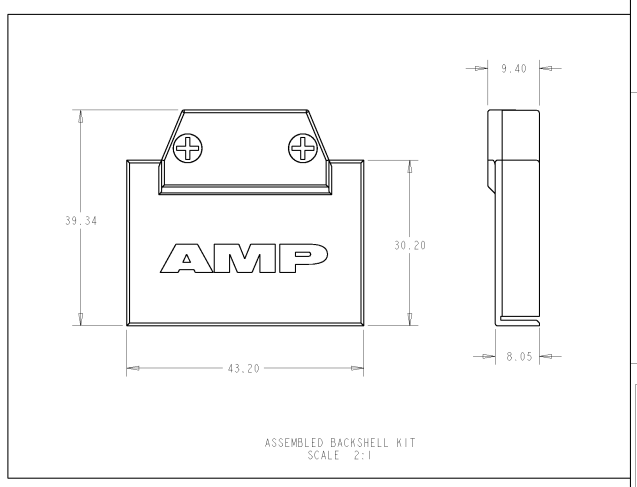
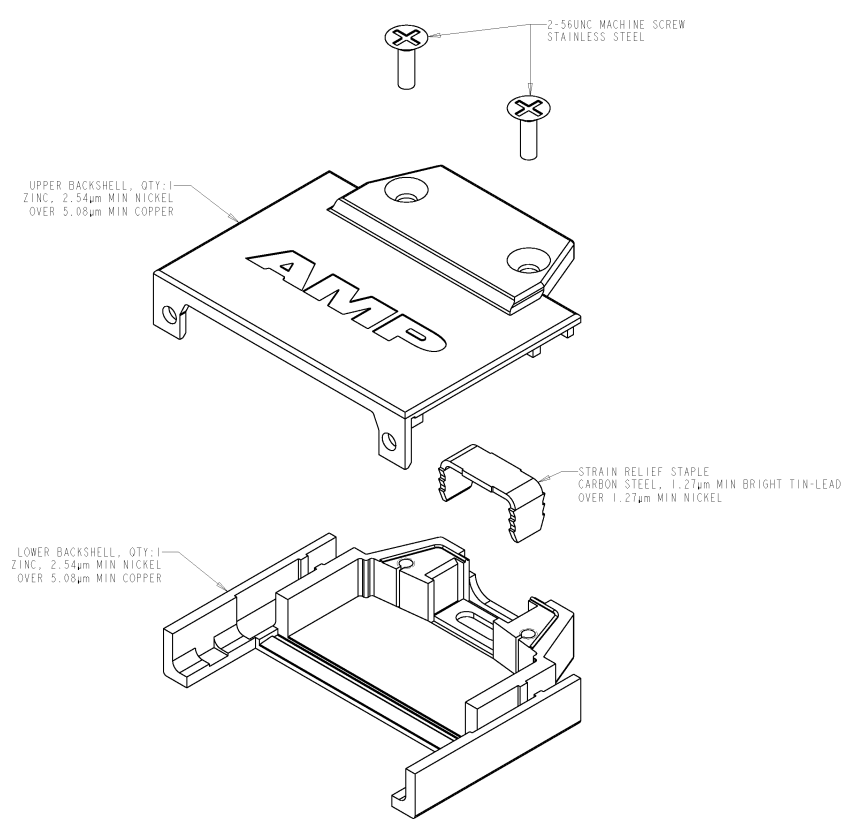


THIS DRAWING IS UNPUBLISHED. RELEASED FOR PUBLICATION. (C) COPYRIGHT 19 BY AMP INCORPORATED. ALL RIGHTS RESERVED.

REV	DATE	DESCRIPTION	BY	CHKD
0	11SEP88	PLSE PER NPR 142, WAS 98-2198-3	SW	RB
A	27APR94	REVISED PER EC 0640-0010-99	SW	RB



- ASSEMBLY INSTRUCTIONS:
1. CABLE PREP LENGTH = 23.5mm
  2. WIRE BRAID SHOULD BE ROLED BACK AND TRIMMED TO A MINIMUM OF 6.5mm
  3. USE STRAIN RELIEF STAPLE TO ATTACH CABLE TO LOWER BACKSHELL
    - UPPER SURFACE OF STAPLE MUST BE BELOW THE MATING SURFACE OF THE TWO HALVES
    - INSERT STAPLE IN INCREMENTS, UNTIL THE WIRES BETWEEN THE TERMINATION POINT AND STAPLE DO NOT MOVE WHEN GENTLY TWISTING THE CABLE BUNDLE
  4. PLACE JACKSCREWS IN PROPER LOCATION
  5. ATTACH UPPER BACKSHELL USING THE TWO MACHINE SCREWS

788362-1  
PART NUMBER

<small>THIS DRAWING IS UNPUBLISHED. RELEASED FOR PUBLICATION. (C) COPYRIGHT 19 BY AMP INCORPORATED. ALL RIGHTS RESERVED.</small>		DWG NO. 24APR98 DESIGNED BY S. WELDON CHKD BY B. STONE APPROVED BY T. BARR PRODUCT SPEC APPLICATION SPEC WEIGHT MATERIAL SEE CALLOUTS	AMP Incorporated Harrisburg, PA 17105-3608 <b>AMP</b> BACKSHELL KIT, UNASSEMBLED, 68 POSN, CHAMP 0.8mm SIZE CASE CODE DRAWING NO A2100779 C=788362 CUSTOMER DRAWING	RESTRICTED TO SCALE 3:1 SHEET 1 OF 1 REV A
--	--	--	--	---