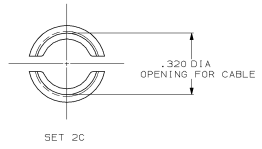
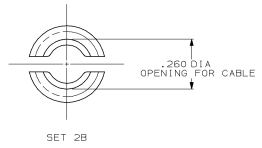
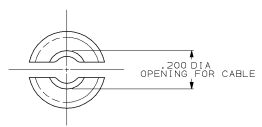
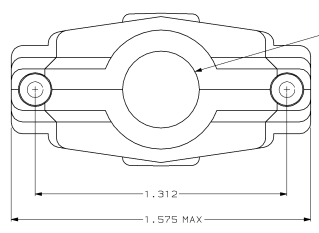


DRAWING MADE IN THIRD ANGLE PROJECTION
 THIS DRAWING IS UNPUBLISHED. RELEASED FOR PUBLICATION
 © COPYRIGHT 19 BY AMP INCORPORATED. ALL INTERNATIONAL RIGHTS RESERVED.

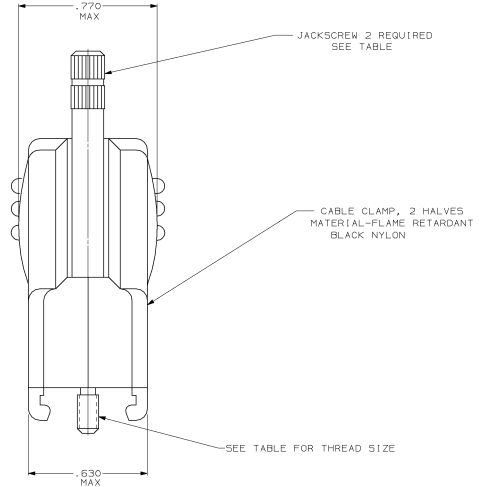
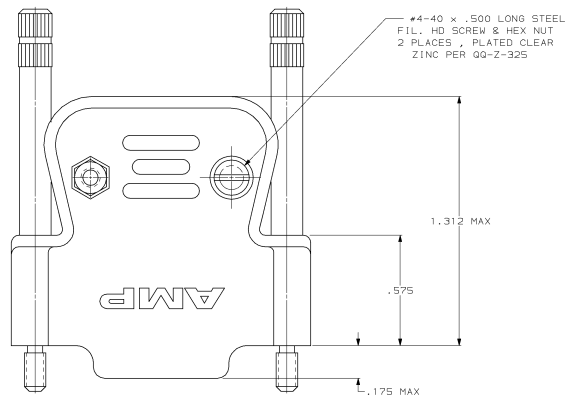
REV	DATE	DESCRIPTION	APPD
A	5-11-90	REDRAWN ON CAD	
B	REV PER EC 0020-246-94		PR
C	OBSOLETE -1		
	PER EC 0020-779-95		CS



CABLE GATES



SEE CABLE GATES
 NO CABLE GATE REQUIRED
 FOR .400 DIA CABLE



1. PARTS PACKAGED UNASSEMBLED.
 ZINC PER QQ-2-325, BLACK.

OBSOLETE	4-40	PASSIVATED	STAINLESS STEEL	745122-2
	M3 x 0.5	STEEL	STEEL	745122-1
	SCREW THREAD	FINISH	MATERIAL	PART NO
		JACKSCREW		

DO NOT SCALE PRINT. UNLESS SPECIFIED, DIMENSIONS IN MILLIMETERS TO SPACES ON 1/2 PLC DEC & 1/16 INCHES	DR 5/11/90 A-STAB 80	AMP INCORPORATED Merrillburg, Pa. 17109
MATERIAL	CHK 5/15/90 S.G. LENKER	
SEE CALLOUT	APPD 7-10-90 J. MCNAM	NAME
FINISH	APPD 7-18-90 J. ASSINI	CABLE CLAMP SIZE 2, 15 POSITIONS CONNECTOR WITH TURNABLE JACKSCREWS, AMPLIMITE™
SEE CALLOUT	APPLICATION SPEC	SIZE D
WEIGHT		PSGR NO 00779
		DRAWING NO 745122
		SCALE 4:1
		SHEET 1 OF 1

CUSTOMER DRAWING