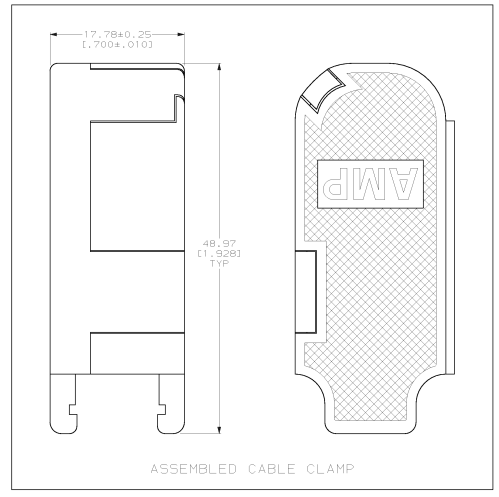
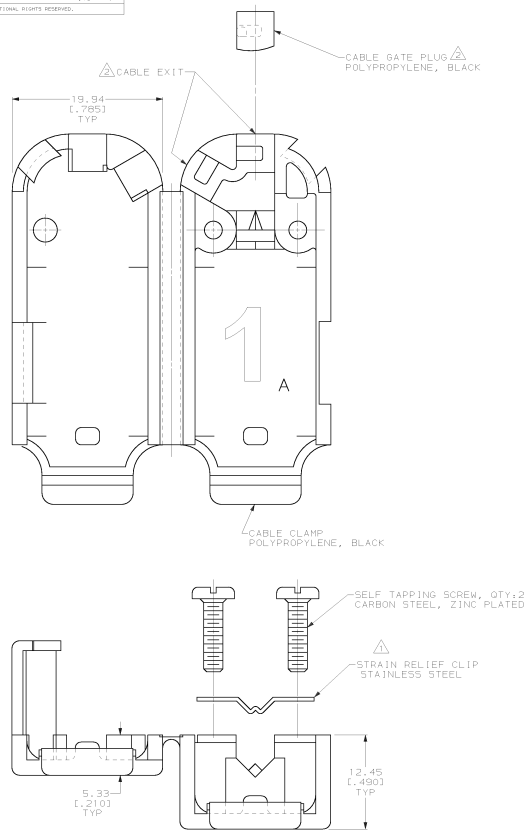


DRAWING MADE IN THIRD ANGLE PROJECTION  
 THESE DIMENSIONS ARE UNLESS SPECIFIED. RELEASED FOR PUBLICATION  
 © COPYRIGHT 19 BY AMP INCORPORATED. ALL INTERNATIONAL RIGHTS RESERVED.

REV	DATE	BY	CHK	APPD	DESCRIPTION	DATE	APPD
D	02/21/90	L. SHIP			REV PER NPR 2735		
A	2-22-90	J. WESTMAN			REV PER ECN B04220		
B	2-22-90	J. WESTMAN			REV PER ECN B04313		
C	2-22-90	J. WESTMAN			REV PER ECN B05736		
D	2-22-90	J. WESTMAN			REV PER ECN 0020-1343-93		
E	2-22-90	J. WESTMAN			REV PER ECN 0020-0002-01		



- ▲ CLIP CAN BE INSTALLED AS SHOWN FOR SMALL DIAMETER CABLE, OR REVERSED FOR LARGE DIAMETER CABLE.
- ▲ CABLE GATE PLUG TO BE PLACED IN CABLE EXIT NOT BEING USED.
- 3. CABLE DIAMETER RANGE = 1.90-6.35 (L.075-.250).

OBSOLETE	BULK PACKED	750100-2
	UNIT KIT	750100-1
	PACKAGING	PART NO.

DO NOT SCALE PRINT. UNLESS SPECIFIED DIMENSIONS IN MM (INCHES) TOLERANCES IN μ	DR 02/21/90 L. SHIP	AMP INCORPORATED
2 P L/C DEC # -	CHK 2-22-90 S. STONE	AMP INCORPORATED, PA. 17105
3 P L/C DEC # -	APPD 2-22-90 J. WESTMAN	
MATERIAL	APPD 2-22-90 J. WESTMAN	NAME
SEE CALLOUTS	MODIFY SPEC -	CABLE CLAMP KIT, UNASSEMBLED, SIZE 1, QUIK-SNAP, 120° & 180° CABLE EXIT, AMPLIMITE™
FINISH	APPLICATION SPEC -	SIZE
SEE CALLOUTS	RETURN -	D 00779
		DRAWING NO.
		750100
		PAGE CODE
		00779
		SCALE
		4:1
		SHEET
		1 OF 1

CUSTOMER DRAWING