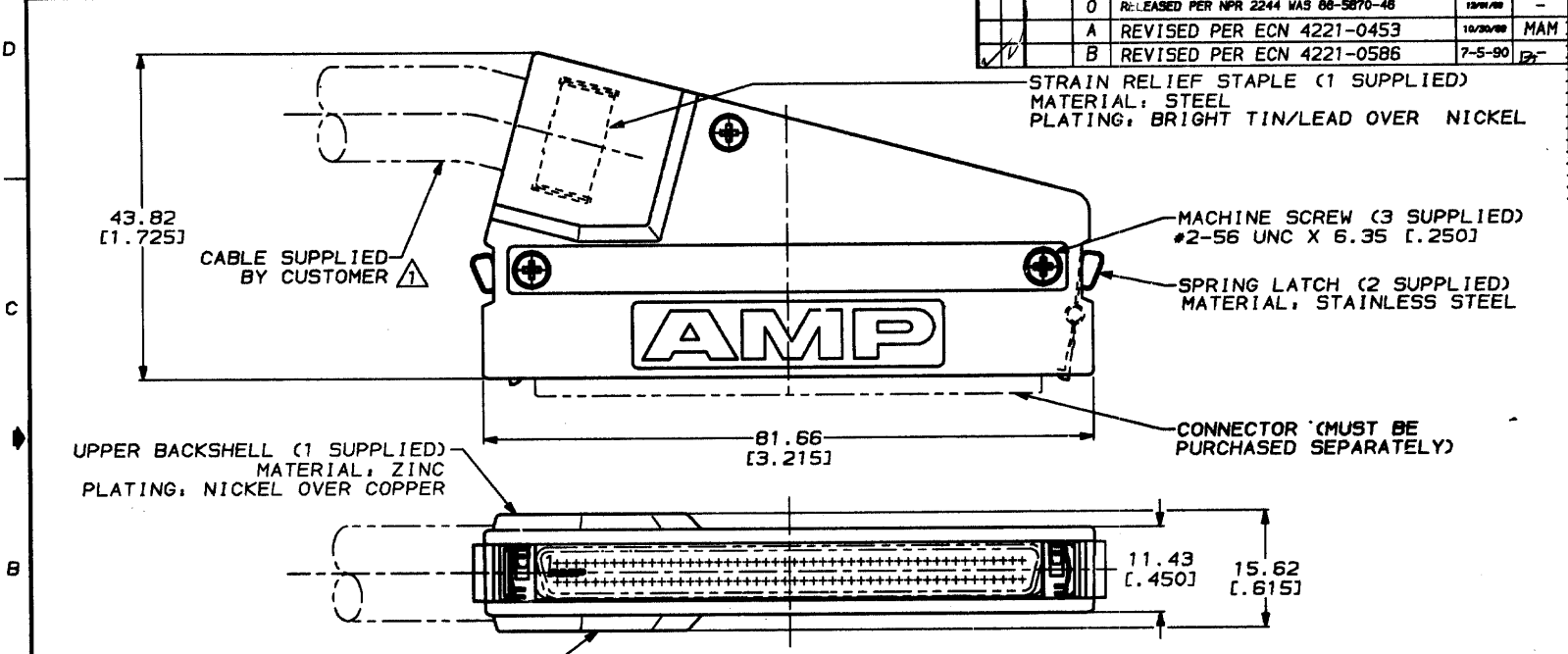


DRAWING MADE IN THIRD ANGLE PROJECTION

THIS DRAWING IS UNPUBLISHED. RELEASED FOR PUBLICATION , 19  
 © COPYRIGHT 19 BY AMP INCORPORATED. ALL INTERNATIONAL RIGHTS RESERVED.

PROJ LOC DIST  
 8 BD 39

REVISIONS			
ZONE	LTR	DESCRIPTION	DATE
0		RELEASED PER NPR 2244 WAS 88-5870-48	12/20/88
A		REVISED PER ECN 4221-0453	10/20/88 MAM
B		REVISED PER ECN 4221-0586	7-5-90



△ 12.70 [.500] MAX CABLE DIA

**METRIC**

AS SHOWN		749206-1
REMARKS		PART NO
DO NOT SCALE PRINT. UNLESS SPECIFIED DIMENSIONS IN INCHES TOLERANCES ON: IS PLC DEC ± .03 [.013] IS PLC DEC ± .03 [.013] ANGLES MATERIAL FINISH WEIGHT		DR 12/20/88 H.E. BIRN CRK 12/20/88 N.A. MCCAFFREY APPD 12/20/88 J.L. BRUNSCHARD 12/20/88 G.E. REYNOLDS PRODUCT SPEC APPLICATION SPEC WEIGHT
AMP INCORPORATED Harrisburg, Pa. 17105		INDIVIDUAL KIT, UNASSEMBLED, 100 POSITION, 75° EXIT, UNKEYED, AMPLIMITE .050 Series
SIZE	PERN NO	DRAWING NO
B	00779	749206
SCALE	2:1	SHEET 1 OF 1

AMP 1470-15 REV 3-87  
 25 JUL 1990 16:12:30 AM 70631

CUSTOMER DRAWING