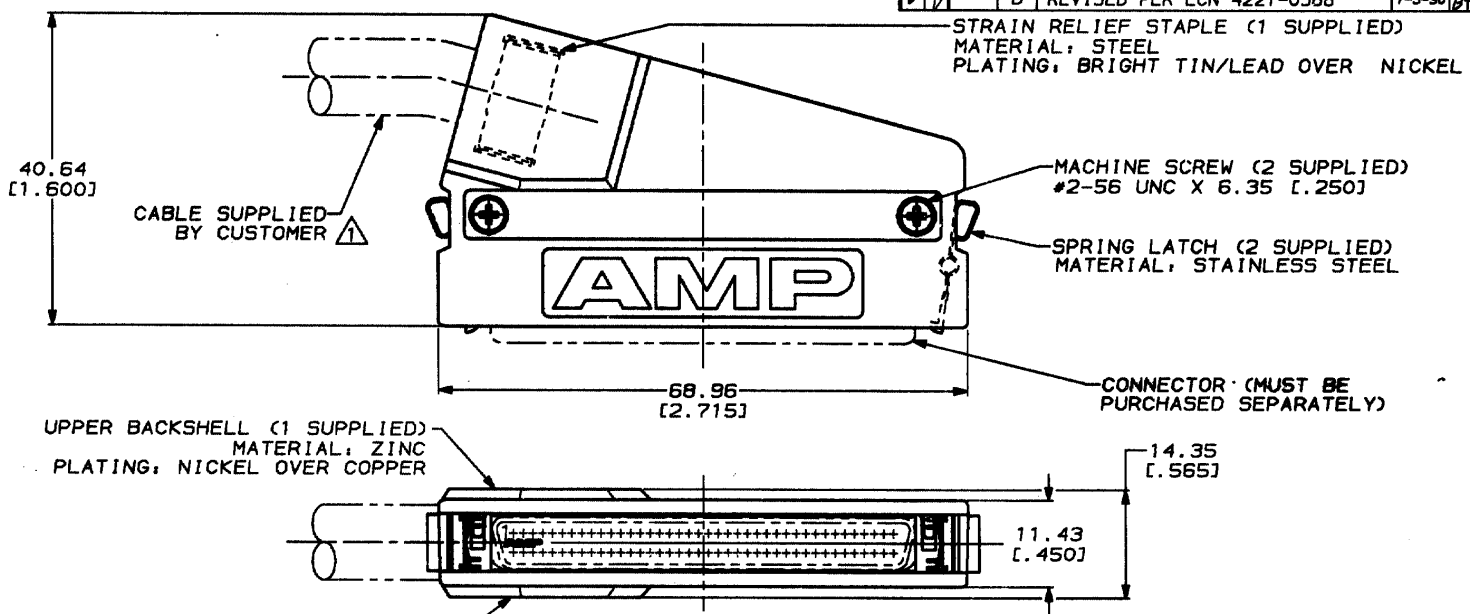


DRAWING MADE IN THIRD ANGLE PROJECTION

THIS DRAWING IS UNPUBLISHED. RELEASED FOR PUBLICATION, 19
 © COPYRIGHT 19 BY AMP INCORPORATED. ALL INTERNATIONAL RIGHTS RESERVED.

MOO LOG DIST
 8 BD 39

ZONE		LTR	DESCRIPTION	DATE	APPO
		0	RELEASED PER NPR 2244 WAS 88-5870-44	12/01/88	-
		A	REVISED PER ECN 4221-0453	10/30/88	MAM
		B	REVISED PER ECN 4221-0586	7-5-90	BT



△ 10.67 [0.420] MAX CABLE DIA



AS SHOWN		749205-1	
REMARKS		PART NO	
<small>DO NOT SCALE PRINT. UNLESS SPECIFIED DIMENSIONS IN INCHES TOLERANCES ON: F L/C DEC ± 0.38 [0.015] ANGLES ± °</small>		DR 12/20/88 H.E. SUK CNK 12/20/88 M.A. HOFFREY APPD 12/20/88 J.J. BRUNSCHARD APPD 12/20/88 G.E. BEINLAGE PRODUCT SPEC - FINISH - APPLICATION SPEC - WEIGHT -	
AMP INCORPORATED Harrisburg, Pa. 17105		NAME INDIVIDUAL KIT, UNASSEMBLED, 80 POSITION, 75° EXIT, UNKEYED, AMPLIMITE .050 Series	
SIZE	FSCN NO	DRAWING NO	
B	00779	749205	
SCALE	2:1	SHEET 1 OF 1	

MP 1470-15 REV 3-82 CUSTOMER DRAWING