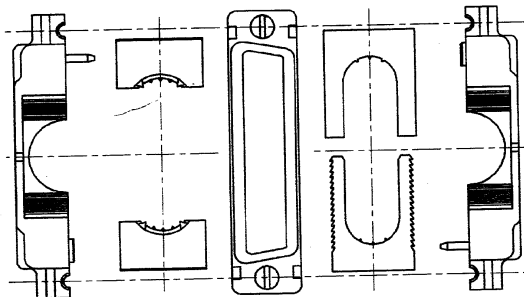


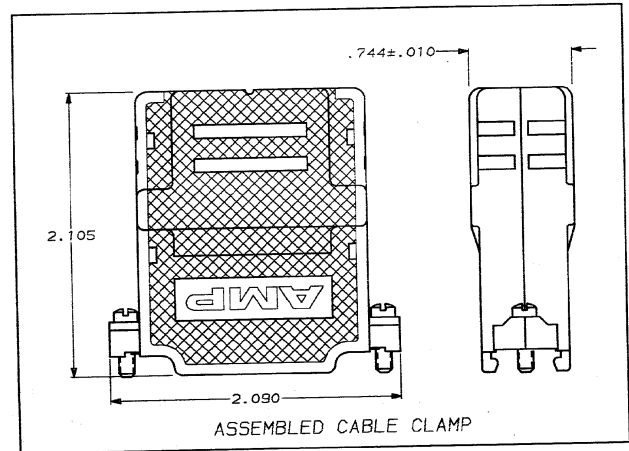
DRAWING MADE IN THIRD ANGLE PROJECTION
 THIS DRAWING IS UNPUBLISHED. RELEASED FOR PUBLICATION .19
 © COPYRIGHT 19 BY AMP INCORPORATED. ALL INTERNATIONAL RIGHTS RESERVED.

MOD		DLC		Q157		REV		REVISIONS		DATE	APPD
NO	BY	NO	BY	NO	BY	NO	BY	DESCRIPTION			
22	BD	39						A	REDRAWN	7-90	
								B	REV PER ECN BD4512	12/05/90	

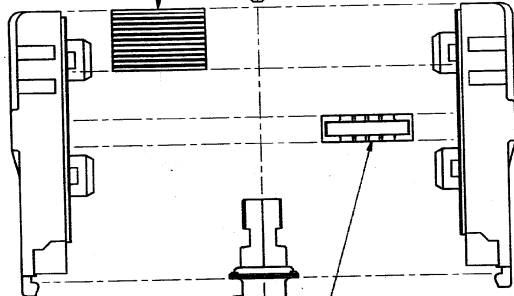


CABLE CLAMP WEDGE SET, QUANTITY: 2,
 ONE SET FOR .190 DIA TO .380 DIA CABLE AND
 ONE SET FOR .380 DIA TO .530 DIA CABLE.

#4-40 MOUNTING SCREW
 QUANTITY: 2



ASSEMBLED CABLE CLAMP



CABLE CLAMP HALF
 QUANTITY: 2

25 POSITION AMPLIMITE
 CONNECTOR SHOWN,
 REFERENCE ONLY.

BRAID TERMINATION CLAMP SET
 QUANTITY: 1

748665-2	
748665-1	
PACKAGING	PART NUMBER

- 1. PARTS PACKAGED UNASSEMBLED.
- △ PARTS PACKAGED AS A UNIT KIT.
- △ PARTS INDIVIDUALLY BULK PACKAGED AND SHIPPED AS A UNIT PACKAGE.
- △ ABS MOLDING COMPOUND, BLACK.
- △ STEEL PER ASTM A108.
- △ PLATED NICKEL OVER COPPER.
- △ ZINC PLATED PER ASTM B633, TYPE III, CLASS SCI, CLEAR CHROMATE.

DO NOT SCALE PRINT. UNLESS SPECIFIED DIMENSIONS IN INCHES TOLERANCES ON +		DR 7-26-90 J. GALLUCCI BG		AMP INCORPORATED Harrisburg, Pa. 17105	
2 PLC DEC ± .005 3 PLC DEC ± .005 ANGLES * -		CHK 9-10-90 J. McCLINTON			
MATERIAL		APPD 9-10-90 J. MESTMAN		NAME	
MOLDED PARTS: △ 4		APPD 9-11-90 J. ASSINI		UNIVERSAL CABLE CLAMP KIT, SHIELDED, SIZE 3, 25 POSITION, AMPLIMITE™	
SCREWS: △ 5		PRODUCT SPEC		DRAWING NO	
FINISH SCREWS: △		APPLICATION SPEC		SIZE	FSCN NO
CABLE CLAMP HALVES: △		-		C	00779
BRAID TERMINATION CLAMPS: △		WEIGHT -		SCALE	2:1
				SHEET 1 OF 1	

CUSTOMER DRAWING

AMP 1471-3 REV 3-90
 0000-014220-AMPLIMITE CABLE CLAMP