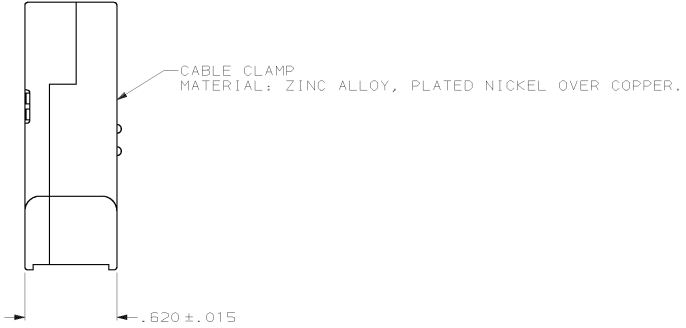
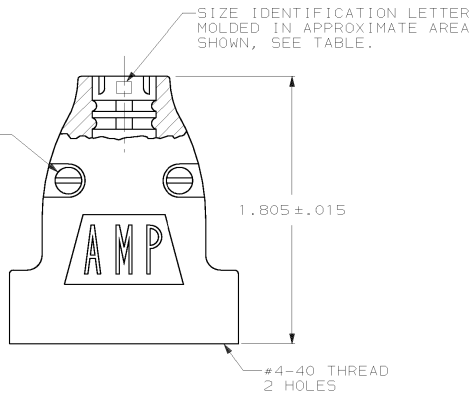
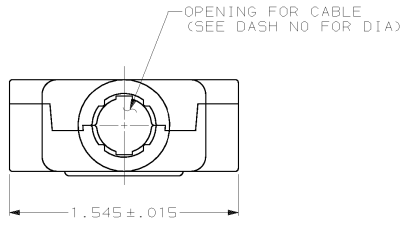


DRAWING MADE IN THIRD ANGLE PROJECTION
 THIS DRAWING IS UNPUBLISHED. RELEASED FOR PUBLICATION
 © COPYRIGHT 19 BY AMP INCORPORATED. ALL INTERNATIONAL RIGHTS RESERVED.

| LOC | DIST | P | F | ZONE | LTR | DESCRIPTION | DATE | APPD |
|-----|------|---|---|------|-----|----------------------------|-----------|------|
| BD | 0 | | | | B | REDRAWN | 7-90 | - |
| | | | | | C | OBS -4 PER EC OUID-0155-00 | 02 FEB 91 | DK |



1. PARTS PACKAGED UNASSEMBLED.

| OBSOLETE | SIZE IDENT LETTER | MAX CABLE DIA | PART NUMBER |
|----------|-------------------|---------------|-------------|
| | B | .225 | 745919-4 |
| | E | .300 | 745919-3 |
| | H | .375 | 745919-2 |
| | K | .430 | 745919-1 |

| | | | | |
|--|-----------------------------------|---|------------------|--|
| DO NOT SCALE PRINT. UNLESS SPECIFIED DIMENSIONS IN INCHES TOLERANCES ON : 2 PLC DEC ± - 3 PLC DEC ± .005 ANGLES ± - | DR 7-25-90 J GALLUCCI BG | AMP INCORPORATED Harrisburg, Pa. 17105 | | |
| SEE CALLOUTS | CHK - APPD - PRODUCT SPEC - | | | NAME CABLE CLAMP KIT, SIZE 2, 15 POSITION, 180 DEGREES, AMPLIMITE™ SERIES |
| FINISH SEE CALLOUTS | APPLICATION SPEC - | SIZE C | FSCM NO 00779 | DRAWING NO 745919 |
| | WEIGHT - | SCALE 2:1 | | SHEET 1 OF 1 |

CUSTOMER DRAWING