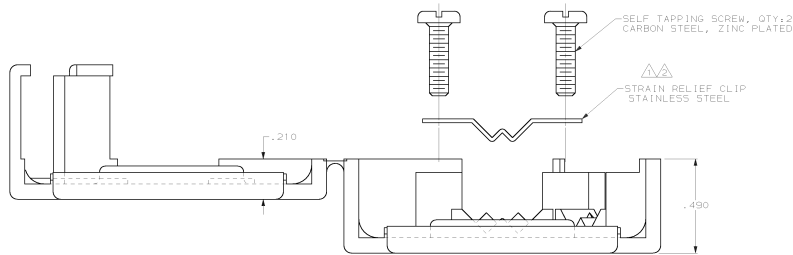
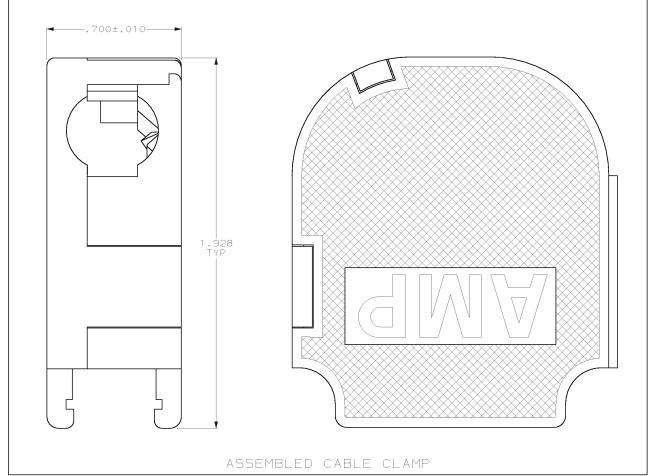
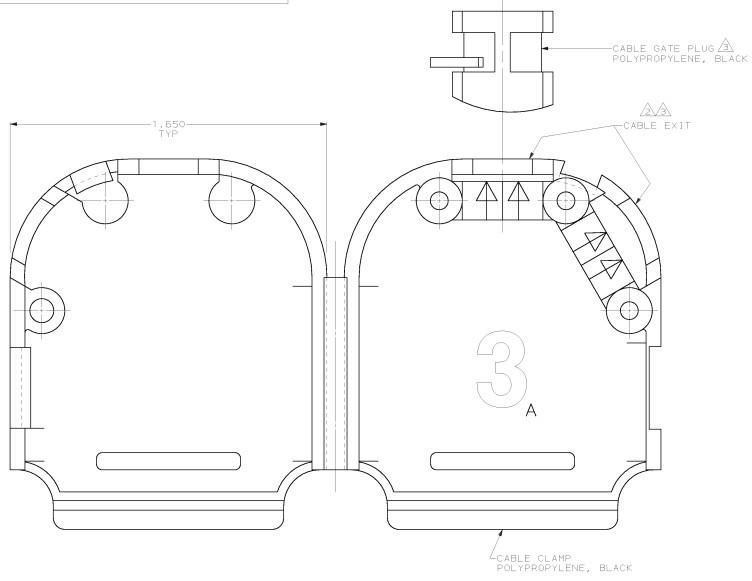


DRAWING MADE IN THIRD ANGLE PROJECTION
 THESE DIMENSIONS ARE UNLESS SPECIFIED. RELEASED FOR PUBLICATION
 © COPYRIGHT 19 BY AMP INCORPORATED. ALL INTERNATIONAL RIGHTS RESERVED.

REV	DATE	DESCRIPTION	DATE	APPD
A	8-15-89	REVISED ECN-BD3163	-	-
B	11-09-91	REV ECN B04809, ADDED -2 NFR 2591	11-09-91	JW
C	11-09-91	REVISED PER ECN B05942	11-09-91	JW
D	10-29-93	REV PER ECN B03719	10-29-93	JW
E	09-09-94	REV PER ECN B04220	09-09-94	JW
F	10-09-94	REV PER ECN B04313	10-09-94	JW
G	10-09-94	REVISED PER ECN B05892	10-09-94	RYT
H	08-04-96	REV PER ECN B05736	08-04-96	RM
HI	07-09-95	ADDED -3 PER NFR 4938	07-09-95	NBS
J	11-09-95	REV PER EC 10020-1343-03	11-09-95	SB
K	06-17-98	REV PER EC 0010-0260-00	06-17-98	JR



- ▲ CLIP CAN BE INSTALLED AS SHOWN FOR SMALL DIAMETER CABLE, OR REVERSED FOR LARGE DIAMETER CABLE.
- ▲ CLIP MAY BE USED AT EITHER CABLE EXIT.
- ▲ CABLE GATE PLUG TO BE PLACED IN CABLE EXIT NOT BEING USED.
- ▲ RETAINER SCREWS AND RETAINER CLIPS PROVIDED WITH THIS KIT FOR USE WITH METAL SHELL CONNECTORS.
- 5. CABLE DIAMETER RANGE = .180-.460.

SUPERSEDED BY 749626-2	SMALL PACK	749626-3
	UNIT KIT	749626-2
	BULK PACKED	749626-1
	PACKAGING	PART NO

DO NOT SCALE PRINT. UNLESS SPECIFIED, DIMENSIONS IN INCHES. TOLERANCES: DIA. ±.005 PLC DEC ±.005 ANGLES ±.5°	DR 03/28/88 S. HELLON CHK 04/25/89 S. STONE APPD 04/25/89 S. SCHWENY MODST SPEC - MATERIAL - FINISH - SEE CALLOUTS	NAME CABLE CLAMP KIT, UNASSEMBLED, SIZE 3, DULK-SHAP, 120° & 180° CABLE EXIT, AMPLIMITE® SIZE D PSCR NO 00779 DRAWING NO 749626 SCALE 4:1 SHEET 1 OF 1
--	---	--

16-107-93 17,05,10 am2561 /Files/vi/0205161/edmod

CUSTOMER DRAWING