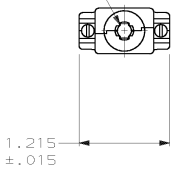


THIS DRAWING IS UNPUBLISHED. RELEASED FOR PUBLICATION
 © COPYRIGHT 19 BY AMP INCORPORATED. ALL INTERNATIONAL RIGHTS RESERVED.

LOC	DIST	BD	P	F	ZONE	LTR	REVISIONS	DATE	APPD
		0					C REDRAWN	7/10/90	-
							D REACTIVATED 1-2 PER EC 0020-0108-93	02/09/93	SB
							E REV PER EC 0020-309-95	05/04/95	JS
							F REV PER EC 0020-881-95	26 AUG 95	JS
							G OBSOLETE -6 PER EC 0020-780-95	06 FEB 96	CS
							H OBS -12 PER EC 0020-0155-00	02 FEB 01	DK

OPENING FOR CABLE
(SEE DASH NO. FOR DIA)

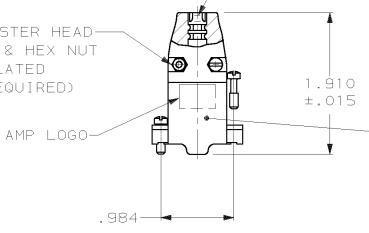


SIZE IDENTIFICATION LETTER
MOLDED IN APPROX AREA
SHOWN, SEE TABLE

#4-40 FILLISTER HEAD
STEEL SCREW & HEX NUT
ZINC PLATED
(2 EACH REQUIRED)

AMP LOGO

TEXTURED
FINISH



.550
±.015

CABLE CLAMP (QTY:2)
MATERIAL: ZINC ALLOY
PLATED NICKEL OVER
COPPER

#4-40 FILLISTER HEAD SCREW
MATERIAL: STEEL, ZINC PLATED
QUANTITY: 2

.620
±.015

OBSOLETE	⚠	H	-	.370	1-745171-2
OBSOLETE	-	H	① SUPPLIED W/O MTG SCREWS	.370	745171-6
-	-	H	-	.370	745171-5
-	-	A	-	.200	745171-2
-	-	C	-	.250	745171-1
PACKAGING		NECK IDENT	REMARKS	CABLE DIA	PART NO.

⚠ PARTS INDIVIDUALLY BULK PACKED.

DO NOT SCALE PRINT. UNLESS SPECIFIED DIMENSIONS IN INCHES TOLERANCES ON : 2 PLC DEC ± - 3 PLC DEC ± .005 ANGLES ± -	DR 7/10/90 A. STAUB BG CHK 9-10-90 J. McCLINTON APPD 9-11-90 B. TAYLOR APPD 9-11-90 J. ASSINI	AMP INCORPORATED Harrisburg, Pa. 17105			
SEE CALLOUTS	PRODUCT SPEC -	NAME CABLE CLAMP KIT, UNASSEMBLED, SIZE 1, 9 POSN, 180 DEGREES, AMPLIMITE™			
FINISH SEE CALLOUTS	APPLICATION SPEC -	SIZE C	FSCM NO 00779	DRAWING NO 745171	
WEIGHT -		SCALE 1:1		SHEET 1 OF 1	

AMP 1471-6 REV 3-89
02-FEB-01 13:55:06 amp34993 /home/amp34993/edminod

CUSTOMER DRAWING