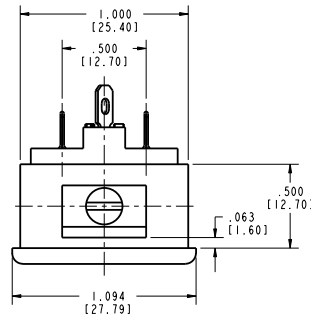


PART NUMBER	SIZE	L	M	A	FACTORY NUMBER
S-2404H-AB	4	2.031 [51.59]	1.625 [41.28]	1.000 [25.40]	703 04 04 001
S-2406H-AB	6	2.469 [62.71]	2.063 [52.40]	1.438 [36.53]	703 04 06 001
S-2408H-AB	8	2.906 [73.81]	2.500 [63.50]	1.875 [47.63]	703 04 08 001
S-2410H-AB	10	3.344 [84.94]	2.938 [74.63]	2.313 [58.75]	703 04 10 001
S-2412H-AB	12	3.781 [96.04]	3.375 [85.73]	2.750 [69.85]	703 04 12 001

DRAWING REVISIONS			
REV	DOCUMENT	APP	DATE
I	DO 06-1068		



- NOTES:
- SPECIFICATIONS:
    - ELECTRICAL:
      - OPERATING VOLTAGE: 250 VAC RMS
      - CURRENT RATING: 15 AMPS
      - CURRENT RESISTANCE: 1.0 MILLIOHMS MAXIMUM
    - INSULATOR: MOLDED MONBLOCK, GENERAL PURPOSE PHENOLIC, BLACK
    - CONTACT: PHOSPHOR BRONZE, MATTE TIN
    - BRACKET, SCREW: STEEL, ZINC WITH CLEAR TRVALENT CHROME
  - ENVIRONMENTAL:
    - OPERATING TEMPERATURE: UP TO +105°C
  - TERMINATION: SOLDER
  - DIMENSIONS IN [ ] ARE MILLIMETERS
  - ALL DIMENSIONS ARE REFERENCE

**RoHS COMPLIANT**

ENGLISH INCHES DO NOT SCALE DRAWING UNLESS OTHERWISE SPECIFIED, ALL DIMENSIONS ARE IN INCHES TOLERANCES FRACTIONS DECIMALS ASSEMBLY THIS DOCUMENT IS THE PROPERTY OF CINCH. NEITHER THIS DOCUMENT NOR ANY OF THE INFORMATION CONTAINED IN IT MAY BE REPRODUCED OR TRANSMITTED IN ANY FORM WITHOUT THE WRITTEN CONSENT OF CINCH.	PRO/E DATE 7/31/06	<b>Cinch</b> 1700 FINLEY RD LONGMEAD, IL, 60148
	DRAWN BY JIMENEZ	TITLE SOCKET AND ANGLE BRACKET ASSEMBLY
	DESIGN ENGINEER A. BALI	MATERIAL CONTROL SPEC NUMBER 06-1068
	DESIGN ENGINEERING MGR. MFG. ENGINEERING QUALITY ASSURANCE	MATERIAL SPEC NUMBER FINISH PROJECT NUMBER C14789-2
	CAD FILE NUMBER S2404HAB	DRAWING NUMBER <b>S-2404H-AB</b>
	CAGE IDENT NO. SIZE 71785 8	SCALE 1.000 SHEET 1 OF 1