

4

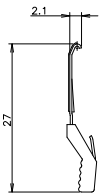
3

2

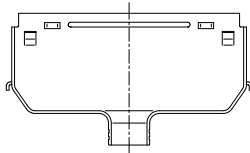
1

THIS DRAWING IS UNPUBLISHED. RELEASED FOR PUBLICATION JUN. 1989.
 © COPYRIGHT 1989 BY TYCO ELECTRONICS CORPORATION. ALL RIGHTS RESERVED.

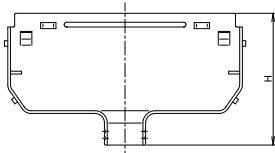
LOC	DIST	REVISIONS		DATE	BY	APP'D
F	LWR	DESCRIPTION				
K		REVISED	ECR-08-009497	15APR08	A.Z.	S.Y.



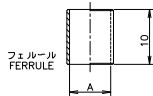
ロッキングスプリング
LOCKING SPRING
(2 EACH/SET)



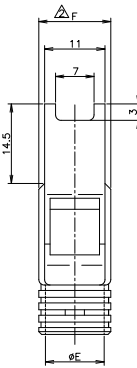
プラグ・リアー・シェル (アッパー)
PLUG REAR SHELL (UPPER)



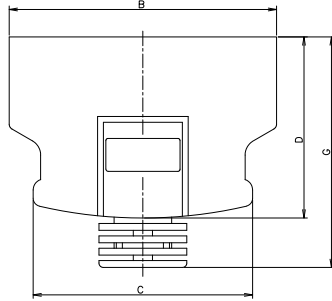
プラグ・リアー・シェル (ボトム)
PLUG REAR SHELL (BOTTOM)



フェルレル
FERRULE



エンクロージ
ENCLOSURE



- 1 材料及び表面仕上げ
 * エンクロージング及びスプリングカバー
 * 熱可塑性樹脂 UL 94V-0
 色: 注記△参照
 * リアーシェル (アッパー、ボトム)
 * 鋼鋼, Niめっき
 * ロッキング スプリング; ステンレス スチール
 * フェルレル; 鋼, 鋼めっき
 △ 本寸法は 68個, 80個及び 100個に適用する。

- 1 MATERIAL AND FINISH
 * ENCLOSURE AND SPRING COVER
 THERMOPLASTIC, UL 94V-0, COLOR; SEE NOTE △
 * REAR SHELL (UPPER & BOTTOM);
 MAT'L: BRASS
 FINISH; NI. PL. OVER COPPER PL.
 * LOCKING SPRING; STAINLESS STEEL
 * FERRULE; MAT'L; COPPER
 FINISH; TIN PL.
 △ THIS DIMENSION IS APPLIED TO 68 POS. 80 POS.
 AND 100POS.

△ 色 (COLOR)

OBSOLETE	-80	1-175753-0	3-175753-0	5-175753-0	7-175753-0
OBSOLETE	-100	175753-9	2-175753-9	4-175753-9	6-175753-9
OBSOLETE	-68	175753-8	2-175753-8	4-175753-8	6-175753-8
OBSOLETE	-50	175753-7	2-175753-7	4-175753-7	6-175753-7
OBSOLETE	-36	175753-5	2-175753-5	3-175753-5	4-175753-5
OBSOLETE	-26	175753-4	2-175753-4	4-175753-4	6-175753-4
OBSOLETE	-20	175753-2	2-175753-2	4-175753-2	6-175753-2
OBSOLETE	-14	175753-1	2-175753-1	4-175753-1	6-175753-1

POS. BEIGE WHITE BLACK MISTY WHITE LIGHT GRAY DARK GRAY BLACKISH GRAY

但し、ブラック、ライトグレー、ダークグレーの寸法は
 ホワイトページと同じ。
 BLACK, LIGHT GRAY, AND DARK GRAY'S DIMENSIONS ARE SAME AS
 BEIGE WHITE'S ONE.

OBSOLETE	-9.8	67.8	59.1	36	9.8	11.8	45	27	9.10~9.60	80	1-175753-0
OBSOLETE	-10.6	80.6	71.8	32	11.2	13.5	42	24	9.75~10.50	100	175753-9
OBSOLETE	-9.3	60.1	51.4	32	9.1	12.0	42	24	8.55~9.05	68	175753-8
OBSOLETE	-8.5	48.7	40.0	32	8.7	*	42	24	7.85~8.35	50	175753-7
OBSOLETE	-8.0	39.8	31.1	32	8.1	*	42	24	6.95~7.45	36	175753-6
OBSOLETE	-7.0	33.5	24.8	33	7.1	*	42	24	6.15~6.65	26	175753-4
OBSOLETE	-6.5	29.7	21.0	33	6.7	*	42	24	5.75~6.25	20	175753-2
OBSOLETE	-6.1	25.8	17.1	33	6.3	*	42	24	5.35~5.85	14	175753-1

THIS DRAWING IS A CONTROLLED DOCUMENT.

DESIGNED BY H. KODAMA	DESIGNED BY Y. FUJIIURA	DESIGNED BY R. NISHIMURA	NAME R. NISHIMURA
CHECKED BY Y. FUJIIURA	CHECKED BY Y. FUJIIURA	CHECKED BY Y. FUJIIURA	DATE 08/08
DIMENSIONS 単位: mm		TOLERANCES UNLESS OTHERWISE SPECIFIED	
0 PLC	±0.1	1 PLC	±0.1
2 PLC	±0.1	3 PLC	±0.1
4 PLC	±0.1	5 PLC	±0.1
FINISH 単位: mm		FINISH 単位: mm	
GENERAL TOLERANCE -公差		MATERIAL 材料	
10 ≥ ±0.2		SEE NOTES	
30 > 10: ±0.25		SEE NOTES	
100 > 30: ±0.3		SEE NOTES	
ANGLES: ±3'		SEE NOTES	

APPROVED BY: [Signature]

SIZE: A2 CAGE CODE: 00779 DRAWING NO: 175753
 CUSTOMER DRAWING: [] SCALE: 2:1 SHEET: 1 OF 1 REV: K