

4

3

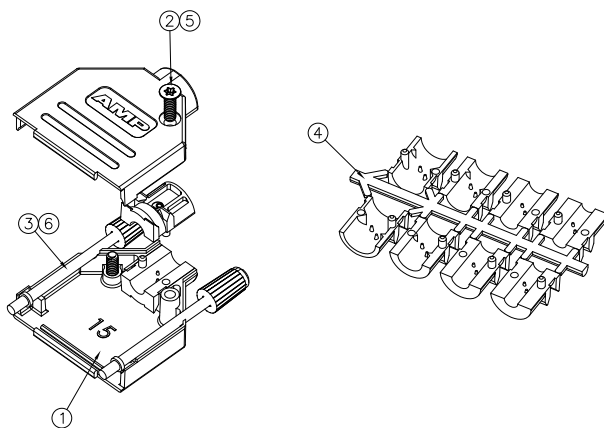
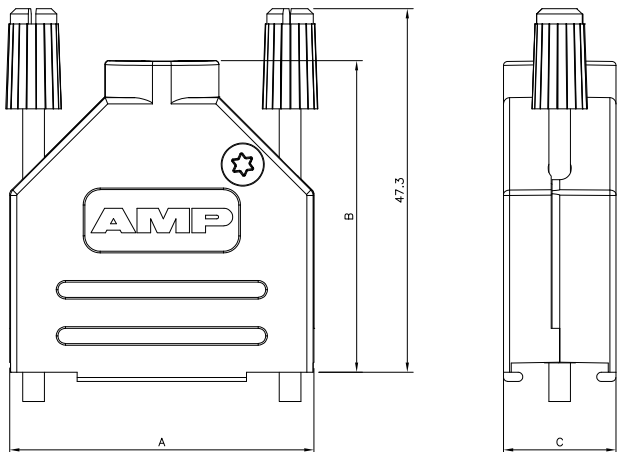
2

1

THIS DRAWING IS UNPUBLISHED. RELEASED FOR PUBLICATION 27-02-02 .-

© COPYRIGHT 2002 BY TYCO ELECTRONICS CORPORATION. ALL RIGHTS RESERVED.

| LOC | DIST | REVISIONS                 |          |     |      |
|-----|------|---------------------------|----------|-----|------|
| P   | LTR  | DESCRIPTION               | DATE     | DWN | APVD |
| E   |      | EBDO-0018-05              | 12-01-05 | RS  | MG   |
| F   |      | ECR-06-013400             | 02-06-06 | AM  | FWK  |
| F1  |      | REVISED PER ECO-09-024927 | 10NOV09  | KK  | AEG  |



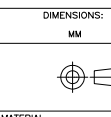
| PART NUMBER               | A    | B    | C    | ITEM | QTY | BACKSHELL | FIXING SCREW        | JACKSCREW | STRAIN RELIEF | FIXING SCREW           | JACKSCREW |
|---------------------------|------|------|------|------|-----|-----------|---------------------|-----------|---------------|------------------------|-----------|
|                           |      |      |      |      |     | HALF      | (TYPE) TORQUE DRIVE | M3        | SET           | (TYPE) POZIDRIVE DRIVE | 4-40      |
| 6-1478762-7               | 53.2 | 47.3 | 14.6 | 2    | -   | 2         | 1                   | 2         | -             | -                      | -         |
| 6-1478762-6               | 39.5 | 40.5 | 14.6 | 2    | -   | 2         | 1                   | 2         | -             | -                      | -         |
| 6-1478762-5               | 31   | 38.3 | 14.6 | 2    | -   | 2         | 1                   | 2         | -             | -                      | -         |
| 6-1478762-3               | 53.2 | 47.3 | 14.6 | 2    | -   | 1         | 2                   | 2         | -             | -                      | -         |
| 6-1478762-2               | 39.5 | 40.5 | 14.6 | 2    | -   | 1         | 2                   | 2         | -             | -                      | -         |
| 6-1478762-1               | 31   | 38.3 | 14.6 | 2    | -   | 1         | 2                   | 2         | -             | -                      | -         |
| 5-1478762-4 & 3-1478762-7 | 70.9 | 52.2 | 15   | 2    | 2   | -         | 1                   | -         | 2             | -                      | -         |
| 5-1478762-3 & 2-1478762-5 | 53.2 | 47.3 | 14.6 | 2    | 2   | -         | 1                   | -         | 2             | -                      | -         |
| 5-1478762-2 & 1-1478762-5 | 39.5 | 40.5 | 14.6 | 2    | 2   | -         | 1                   | -         | 2             | -                      | -         |
| 5-1478762-1 & 1478762-9   | 31   | 38.3 | 14.6 | 2    | 2   | -         | 1                   | -         | 2             | -                      | -         |

1. FOR ASSEMBLY DETAILS REFER TO LEAFLET 0-1478530-1. 1-PER BOX OF 100 PARTS

⚠ OBSOLETE PARTS: OBSOLETE CIS STREAMLINING PER D.RENAUD/D.SINISI

| KITS/BAG | DESCRIPTION                      | PART NUMBER |
|----------|----------------------------------|-------------|
| 1        | METAL BACKSHELL 37 WAY TOP ENTRY | 5-1478762-4 |
| 1        | METAL BACKSHELL 25 WAY TOP ENTRY | 5-1478762-3 |
| 1        | METAL BACKSHELL 15 WAY TOP ENTRY | 5-1478762-2 |
| 1        | METAL BACKSHELL 9 WAY TOP ENTRY  | 5-1478762-1 |
| 100      | METAL BACKSHELL 25 WAY TOP ENTRY | 6-1478762-7 |
| 100      | METAL BACKSHELL 15 WAY TOP ENTRY | 6-1478762-6 |
| 100      | METAL BACKSHELL 9 WAY TOP ENTRY  | 6-1478762-5 |
| 100      | METAL BACKSHELL 25 WAY TOP ENTRY | 6-1478762-3 |
| 100      | METAL BACKSHELL 15 WAY TOP ENTRY | 6-1478762-2 |
| 100      | METAL BACKSHELL 9 WAY TOP ENTRY  | 6-1478762-1 |
| 100      | METAL BACKSHELL 37 WAY TOP ENTRY | 3-1478762-7 |
| 100      | METAL BACKSHELL 25 WAY TOP ENTRY | 2-1478762-5 |
| 100      | METAL BACKSHELL 15 WAY TOP ENTRY | 1-1478762-5 |
| 100      | METAL BACKSHELL 9 WAY TOP ENTRY  | 1478762-9   |

THIS DRAWING IS A CONTROLLED DOCUMENT.



| DIMENSIONS: | TOLERANCES UNLESS OTHERWISE SPECIFIED: |
|-------------|--|
| MM          | 0 PLC ± -                              |
|             | 1 PLC ± -                              |
|             | 2 PLC ± -                              |
|             | 3 PLC ± -                              |
|             | 4 PLC ± -                              |
|             | ANGLES ± -                             |
| MATERIAL    | FINISH                                 |

|                  |          |
|------------------|----------|
| DWN              | 27-02-02 |
| CHK              | 27-02-02 |
| APVD             | 27-02-02 |
| PRODUCT SPEC     |          |
| APPLICATION SPEC |          |
| WEIGHT           |          |
| CUSTOMER DRAWING |          |

|  |                  |
|--|------------------|
| Tyco Electronics Corporation<br>Stanmore, Middlesex, HA7 4RS |                  |
| NAME: AM STRAIGHT ENTRY                                      |                  |
| SIZE: A3   | CAGE CODE: 00779 |
| DRAWING NO: 1478762  |                  |
| RESTRICTED TO:   |                  |
| SCALE: 1:1   | SHEET: 1 OF 1    |
| REV: F1  |                  |