

DESCRIPTION: STRAIGHT, SNAP TOGETHER - GRAY & BLACK PLASTIC

SPECIFICATIONS:

MATERIAL: A.B.S. UL94-HB

BACKSHELL KIT INCLUDES:

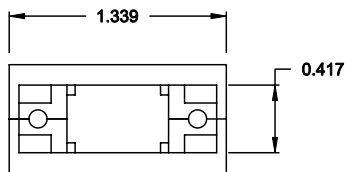
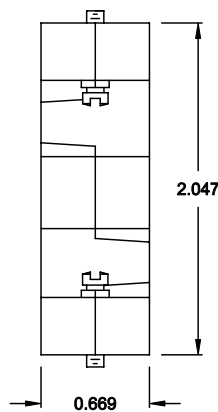
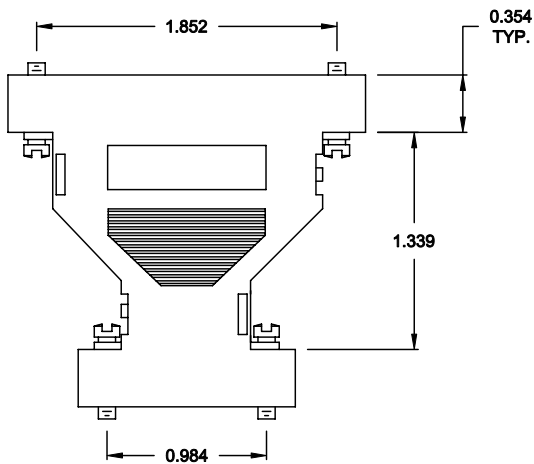
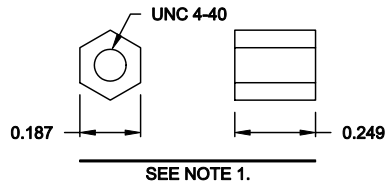
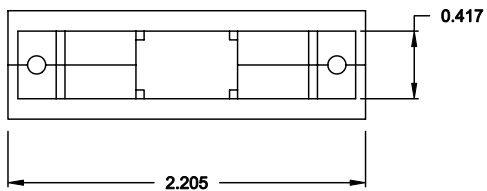
- (2) BACKSHELL HALVES
- (4) JACKSCREWS

NOTE:

1. IF REQUIRED, COUPLING FOR FEMALE CONNECTOR, P/N 160-000-006R032, MUST BE ORDERED SEPARATELY


957-925-010RYY1

SERIES _____
 POSITIONS _____
 009 _____
 025 _____
 MATERIAL _____
 010 = PLASTIC _____
 RoHS COMPLIANT _____
 COLOR _____
 01 = BLACK _____
 03 = GRAY _____
 PUT-UP _____
 1 = KIT _____



DO NOT SCALE FROM DRAWING

RoHS COMPLIANT

	THESE DRAWINGS AND SPECIFICATIONS ARE THE PROPERTY OF NorComp AND SHALL NOT BE REPRODUCED, COPIED OR USED AS THE BASIS FOR THE MANUFACTURE OF SALE OF APPARATUS WITHOUT WRITTEN PERMISSION.		DRAWN: C. SMITH	DATE: 05-11-07
			CHECKED:	DATE:
<h1>NorComp</h1>		SCALE: 1:1	SHEET 1 OF 1	REV 0
		DWG NO. 957-925-010RYY1		