

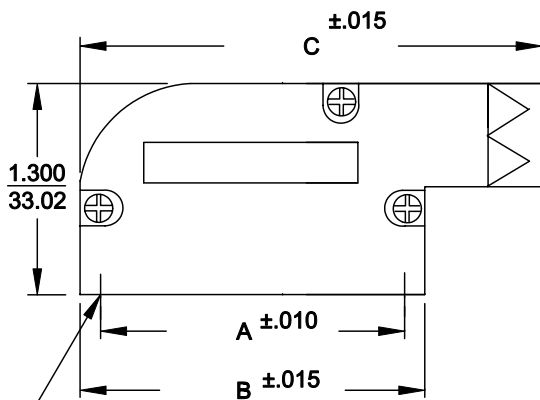
DESCRIPTION: **981 SERIES R/A BACKSHELL**

981-XXX-XXXRXX1

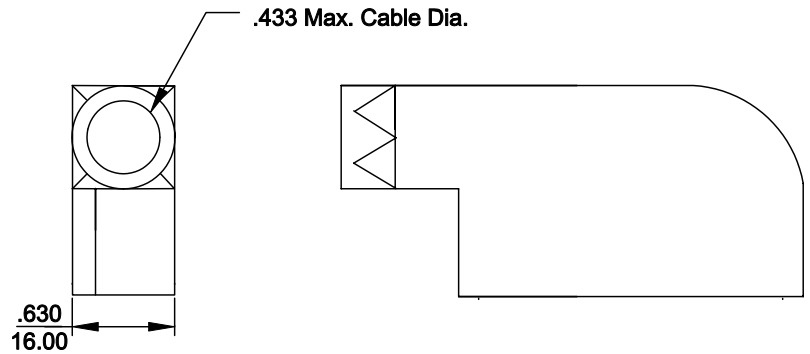
BACKSHELL KIT INCLUDES:

- (2) BACKSHELL HALVES
- (3) HOUSING SCREWS
- (1) GROMMET TREE
- (NON-CONDUCTIVE GROMMETS)

SERIES _____
 POSITIONS _____
 009
 015
 025
 MATERIAL _____
 030 = ZINC
 COLOR: _____
 12 = NICKEL OVER COPPER
 PUT-UPS _____
 1 = KIT



4-40 INTERNAL THREADS



| SIZE | A | B | C |
|------|-------|-------|-------|
| 9 | .984 | 1.240 | 1.850 |
| 15 | 1.312 | 1.555 | 2.323 |
| 25 | 1.852 | 2.106 | 2.835 |

MATERIAL: DIE-CAST ZINC ALLOY
NICKEL PLATED
RoHS COMPLIANT



THESE DRAWINGS AND SPECIFICATIONS ARE THE PROPERTY OF NorComp AND SHALL NOT BE REPRODUCED, COPIED OR USED AS THE BASIS FOR THE MANUFACTURE OR SALE OF APPARATUS WITHOUT WRITTEN PERMISSION.

| | | |
|--------------------------------|-------------------------|-----------------|
| DRAWN: PAM JENKINS | DATE: 7-28-05 | |
| CHECKED: | DATE: | |
| SCALE | SHEET OF | REV 1 |
| DWG NO. 981-0XX-030R121 | | |

NorComp