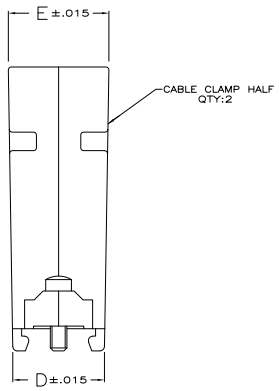
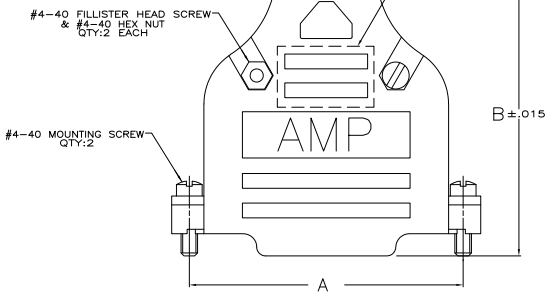
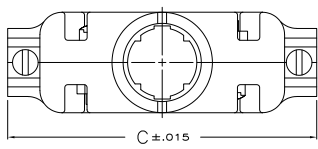
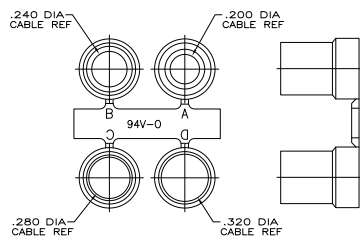


THIS DRAWING IS UNPUBLISHED  
 ALL RIGHTS RESERVED

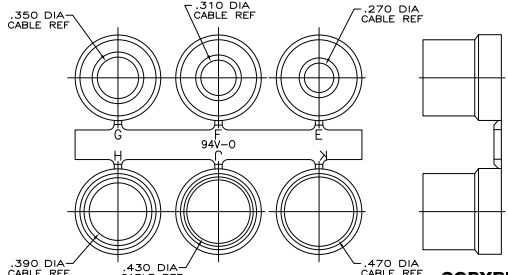
REV	DATE	DESCRIPTION	BY	CHK	APP
00					
A1		REVISED PER EDD-11-004835			



- PARTS PACKAGED UNASSEMBLED AS A UNIT KIT.
- CABLE CLAMP HALVES: BLACK ABS MOLDING COMPOUND, FILLISTER HEAD SCREWS, HEX NUTS & MOUNTING SCREWS: STEEL PER ASTM A108, GROMMETS: FLEXIBLE PVC, UL 94V-0 RATED, COLOR: BLACK.
- CABLE CLAMP HALVES: NICKEL OVER COPPER, FILLISTER HEAD SCREWS, HEX NUTS & MOUNTING SCREWS: ZINC PLATED .000200-.000400 THICK, CLEAR CHROMATE COATING.
- SIZE 3 CONFIGURATION SHOWN. NUMBER AND SIZE OF SLOTS IN THIS AREA VARIES BY CABLE CLAMP SIZE.



GROMMET ASSORTMENT FOR SIZES 1 & 2 ONLY



GROMMET ASSORTMENT FOR SIZES 3, 4 & 5 ONLY

**COPYRIGHT 2005  
 TE CONNECTIVITY CORP  
 ALL RIGHTS RESERVED**

SIZE	DATE SIZE	DRAWING NO	REV	DATE	BY	CHK	APP
900	.730	2.644	1.920	2.406	5		5748677-5
800	.620	2.738	1.920	2.500	4		5748677-4
.680	.640	2.090	1.920	1.852	3		5748677-3
.620	.620	1.545	1.910	1.312	2		5748677-2
.570	.630	1.215	1.910	.984	1		5748677-1
E	D	C	B	A	SIZE		PART NO

THIS DRAWING IS A CONTROLLED DOCUMENT. DATE: 8/18/05 BY: J. HENNY 8/18/05

TE Connectivity

REVISIONS: DATE: 11/11/05 BY: M. WILMSLEY 8/18/05

DESCRIPTION: KIT, CABLE CLAMP, 180 DEG EXIT, W/GROMMETS AMPLUMITE SERIES, PLATED PLASTIC

DATE: 11/11/05 DRAWING NO: 5748677

CUSTOMER DRAWING