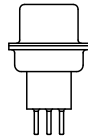
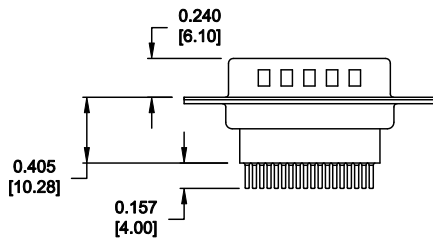
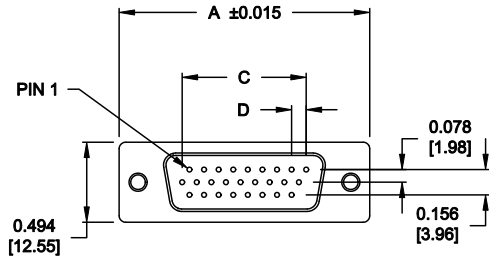


DESCRIPTION: HIGH DENSITY VERTICAL HIGH PROFILE MACHINED



MATERIAL:

INSULATOR: PBT, UL94V-0, 230°C PROCESS TEMP.,
 CHEMICAL RESISTANCE, COLOR - BLACK
 SHELL: STEEL, NICKEL PLATED
 CONTACT: BRASS, GOLD FLASH ENTIRE CONTACT

ELECTRICAL:

CURRENT RATING: 2 AMPS
 DIELECTRIC WITHSTANDING VOLTAGE: 1,000VAC rms
 INSULATION RESISTANCE: 5,000 MegOhms Min.
 CONTACT RESISTANCE: 10 Milliohms Max.
 WORKING TEMPERATURE: -55°C TO +125°C

196-YYY-113LYY1


SERIES _____
 POSITIONS _____
 015 _____
 026 _____
 GENDER _____
 1 = MALE (GROUND INDENTS)
 TERMINATION _____
 1 = PC MOUNT
 SHELL PLATING _____
 3 = NICKEL PLATED
 RoHS COMPLIANT (LOW TEMP. PROCESS) _____
 HARDWARE OPTIONS _____
 00 = 0.120" MOUNTING HOLE
 03 = 4-40 HEX STANDOFFS
 55 = 4-40 INSERTS
 PLATING _____
 1 = GOLD FLASH

DIMENSIONS (IN.)

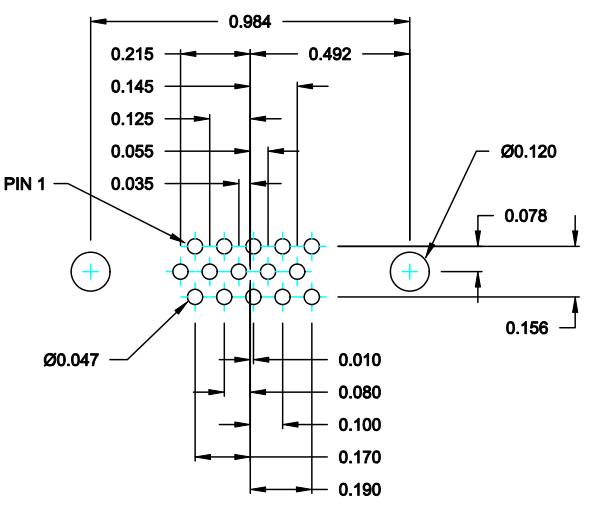
| No. OF PINS | A | B | C | D |
|-------------|------------------|------------------|------------------|-----------------|
| 15 | 1.214 [30.84] | 0.984 [24.99] | 0.405 [10.29] | 0.090 [2.29] |
| 26 | 1.545 [39.24] | 1.312 [33.32] | 0.765 [19.43] | 0.090 [2.29] |

DO NOT SCALE FROM DRAWING

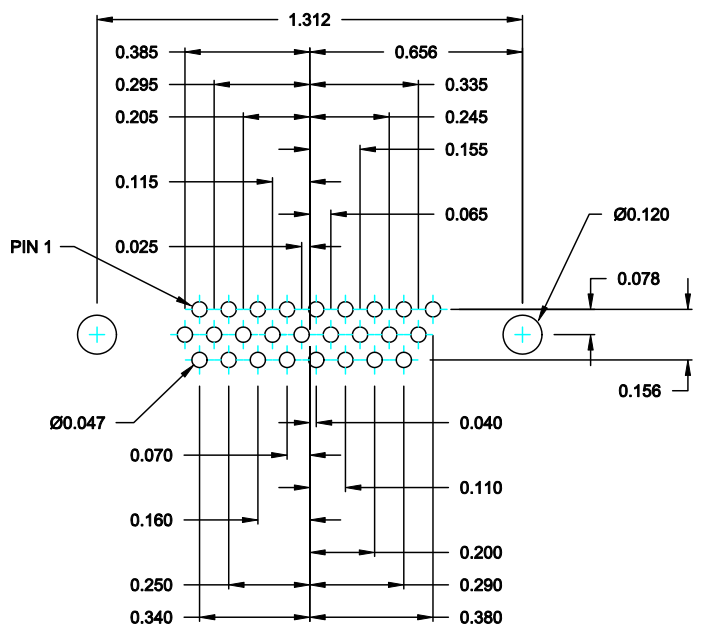
RoHS COMPLIANT

| | | | | |
|---|---|---------------------------------|----------------------------|-----------------------|
|  | THESE DRAWINGS AND SPECIFICATIONS ARE THE PROPERTY OF NorComp AND SHALL NOT BE REPRODUCED, COPIED OR USED AS THE BASIS FOR THE MANUFACTURE OF SALE OF APPARATUS WITHOUT WRITTEN PERMISSION. | | DRAWN: PAM JENKINS | DATE: 09-15-05 |
| | | | CHECKED: | DATE: |
| <h1>NorComp</h1> | | SCALE: 1:1 | SHEET 1 OF 3 | REV 4 |
| | | DWG NO. 196-YYY-113-LYY1 | | |

DESCRIPTION: HIGH DENSITY DIP SOLDER MALE FOOTPRINT




15 POSITION



26 POSITION

DO NOT SCALE FROM DRAWING

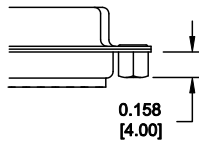
RoHS COMPLIANT

| | | | | |
|---|---|---------------------------------|----------------------------|-----------------------|
|  | THESE DRAWINGS AND SPECIFICATIONS ARE THE PROPERTY OF NorComp AND SHALL NOT BE REPRODUCED, COPIED OR USED AS THE BASIS FOR THE MANUFACTURE OF SALE OF APPARATUS WITHOUT WRITTEN PERMISSION. | | DRAWN: PAM JENKINS | DATE: 10-29-01 |
| | | | CHECKED: | DATE: |
| <h1>NorComp</h1> | | SCALE: 2:1 | SHEET 2 OF 3 | REV 4 |
| | | DWG NO. 196-YYY-113-LYY1 | | |

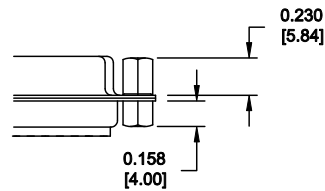
DESCRIPTION: HARDWARE

TOLERANCE:
ALL DIMENSIONS ARE ± 0.010

55X 0.158" (BOARD SIDE)




03X 0.158" (BOARD SIDE) - 0.230" MATING SIDE



DO NOT SCALE FROM DRAWING

RoHS COMPLIANT

| | | | |
|---|---|----------------------------------|---|
|  | THESE DRAWINGS AND SPECIFICATIONS ARE THE PROPERTY OF NorComp AND SHALL NOT BE REPRODUCED, COPIED OR USED AS THE BASIS FOR THE MANUFACTURE OF SALE OF APPARATUS WITHOUT WRITTEN PERMISSION. | DRAWN: M.SIGMON | DATE: 11-19-10 |
| | | CHECKED: | DATE: |
| NorComp | | SCALE: | SHEET 3 OF 3 REV 4 |
| | | DWG. NO. 196-YYY-113-LYY1 | |