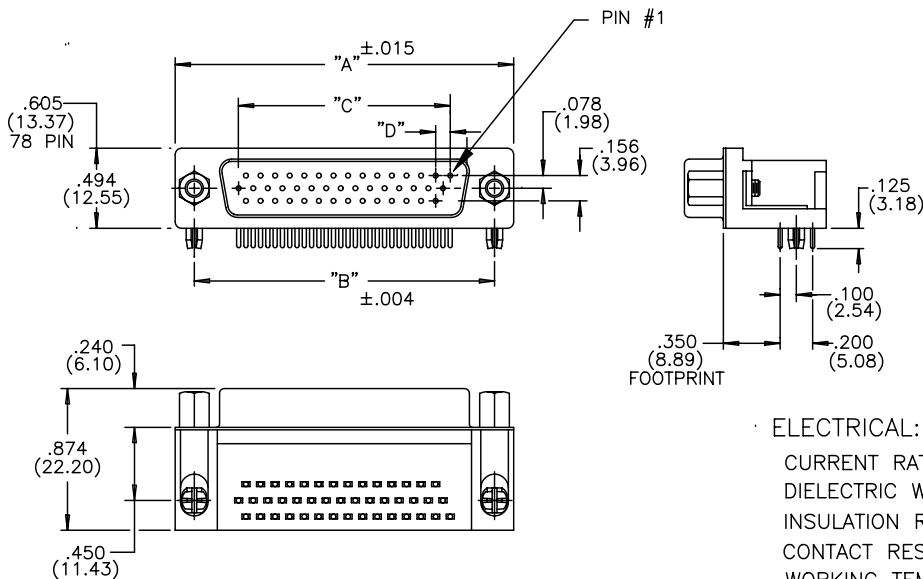


DESCRIPTION: HIGH DENSITY RIGHT ANGLE WITH FERRITE



MATERIALS:

INSULATOR: PBT, UL94V-0, 230°C PROCESS TEMP.
CHEMICAL RESISTANCE, COLOR BLACK

SHELL: STEEL, NICKEL PLATED

CONTACT: MALE:BRASS; FEMALE:PHOSPHOR BRONZE
GOLD FLASH IN MATING AREA
TIN PLATING ON TAIL ENDS

RoHS COMPLIANT

ELECTRICAL:

CURRENT RATING: 2 AMPERES

DIELECTRIC WITHSTANDING VOLTAGE: 1000VAC rms AT SEA LEVEL

INSULATION RESISTANCE: 5000 MEGOHMS MIN.

CONTACT RESISTANCE: 10 MILLIOHMS MAX.

WORKING TEMPERATURE: -55° TO +125° C

FERRITE SPECS: ATTENUATION - 25 OHMS MIN @ 30 Mhz,
35 OHMS MIN @ 50 Mhz, 50 OHMS @ 100 Mhz.

194-XXX-X13LXX1

SERIES _____

NUMBER OF CONTACTS _____

GENDER _____

1 = MALE

2 = FEMALE (NO GROUND INDENTS)

PC MOUNT _____

3 = NICKEL SHELL _____

HARDWARE OPTIONS: _____

17 = 4-40 INSERT WITH INSIDE GROUND STRAP


53 = 4-40 INSERT WITH BOARD LOCKS

56 = 4-40 STANDOFFS WITH BOARD LOCKS

PLATING: _____

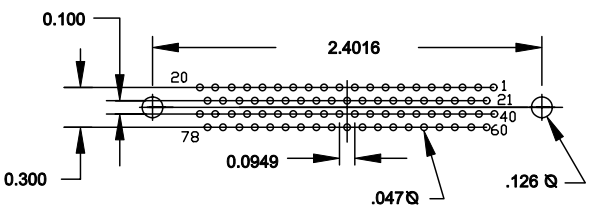
1 = GOLD FLASH

NUMBER OF CONTACTS	"A"	"B"	"C"	"D"
	Inch (mm)	Inch (mm)	Inch (mm)	Inch (mm)
15	1.214 (30.84)	.984 (24.99)	.405 (10.29)	.090 (2.29)
26	1.545 (39.24)	1.312 (33.32)	.765 (19.43)	.090 (2.29)
44	2.088 (53.04)	1.852 (47.04)	1.305 (33.15)	.090 (2.29)
62	2.730 (69.34)	2.500 (63.50)	1.948 (49.47)	.095 (2.41)
78	2.635 (66.93)	2.406 (61.11)	1.805 (45.85)	.095 (2.41)

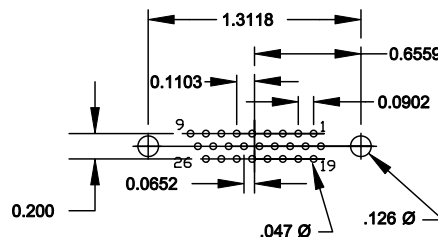
	THESE DRAWINGS AND SPECIFICATIONS ARE THE PROPERTY OF NorComp AND SHALL NOT BE REPRODUCED, COPIED OR USED AS THE BASIS FOR THE MANUFACTURE OF SALE OF APPARATUS WITHOUT WRITTEN PERMISSION.		DRAWN: PAM JENKINS	DATE: 9-15-05
	<h1>NorComp</h1>			CHECKED:
SCALE:				SHEET 1 OF 1
DWG NO. 194-XXX-213LXX1				

DESCRIPTION: HIGH DENSITY RIGHT ANGLE FEMALE FOOTPRINT

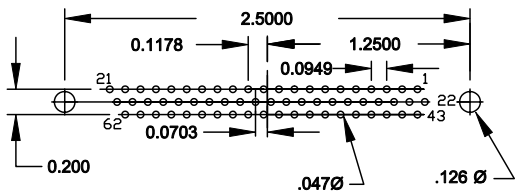
78 POSITION FEMALE



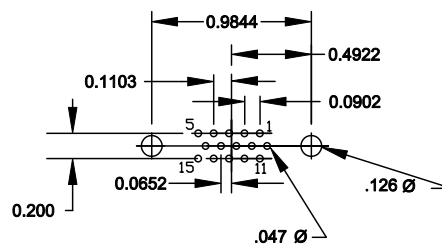
26 POSITION FEMALE



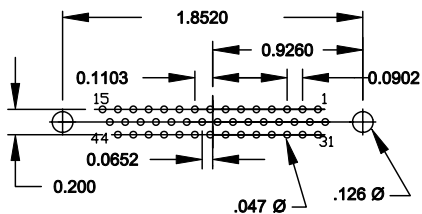
62 POSITION FEMALE




15 POSITION FEMALE



44 POSITION FEMALE



VIEWS ARE COMPONENT SIDE

	THESE DRAWINGS AND SPECIFICATIONS ARE THE PROPERTY OF NorComp AND SHALL NOT BE REPRODUCED, COPIED OR USED AS THE BASIS FOR THE MANUFACTURE OF SALE OF APPARATUS WITHOUT WRITTEN PERMISSION.		DRAWN: PAM JENKINS	DATE: 10-29-01
			CHECKED:	DATE:
<h1>NorComp</h1>	SCALE:	SHEET 1	OF 1	REV 4
	DWG NO. HIGH DENSITY RIGHT ANGLE FEMALE FOOTPRINT			