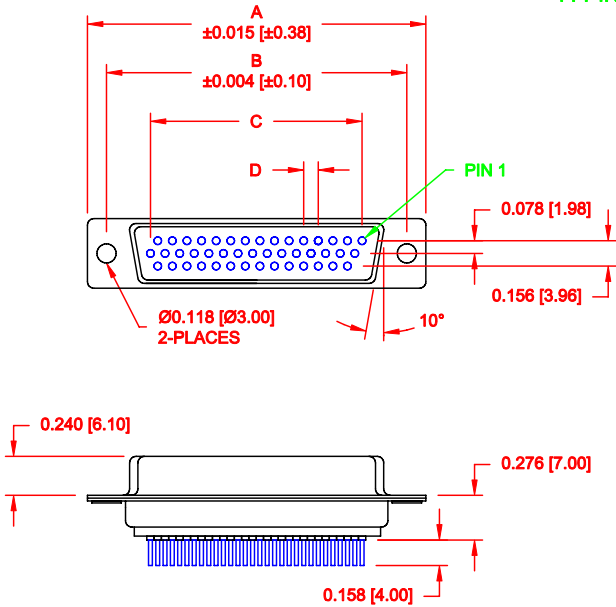


DESCRIPTION: HIGH DENSITY FEMALE - VERTICAL DIP - LOW PROFILE - STAMPED

44 PIN SHOWN



No. OF PINS	DIMENSIONS			
	A	B	C	D
15	1.214	0.984	0.405	0.090
26	30.80	24.99	10.29	2.29
44	2.088	1.852	1.305	0.090
62	53.04	47.04	33.15	2.29
78	2.730	2.500	1.948	0.095
	69.34	63.50	49.47	2.41
	2.635	2.406	1.805	0.095
	66.93	61.11	45.85	2.41

4 ROWS

195-YYY-2 1 3 L YY 1

SERIES POSITIONS
 015
 026
 044
 062
 078
 GENDER
 2 = FEMALE
 TERMINATION
 1 = PC MOUNT
 SHELL PLATING
 3 = NICKEL
 RoHS COMPLIANT
 LOW PROCESS TEMP. - 230°C
 HARDWARE OPTIONS
 00 = NO HARDWARE
 03 = 4-40 HEX STANDOFFS
 55 = 4-40 INSERTS
 PLATING OPTIONS
 1 = GOLD FLASH



MATERIAL:

- SHELL: STEEL, NICKEL PLATED
- INSULATOR: PBT, UL 94V-O RATED, 230°C PROCESS TEMP CHEMICAL RESISTANCE, BLACK
- CONTACT: PHOSPHOR BRONZE, GOLD FLASH IN MATING AREA TIN PLATING ON TAIL ENDS

ELECTRICAL:

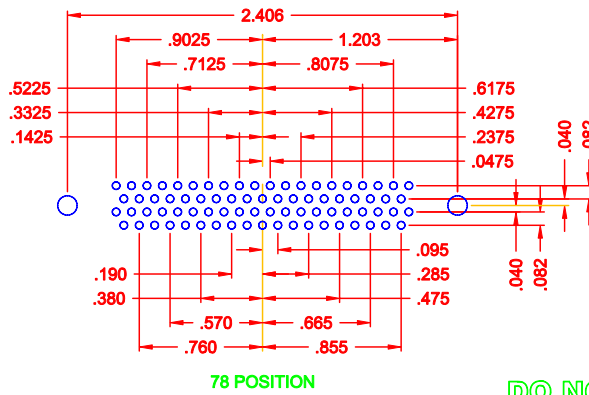
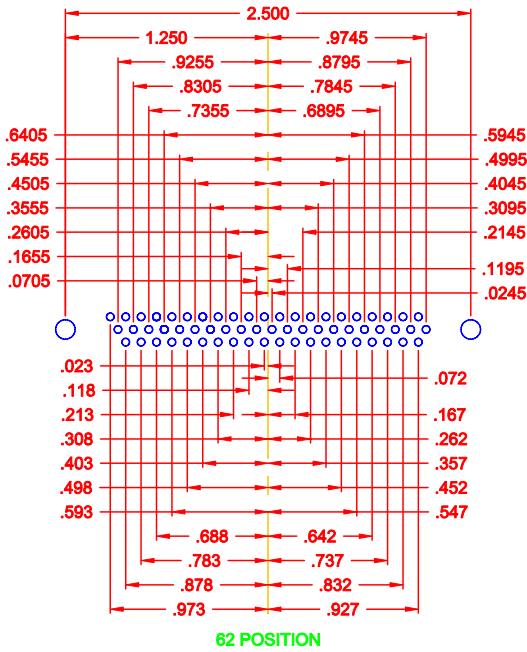
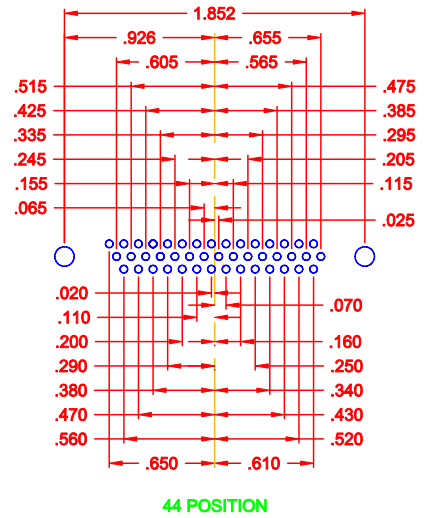
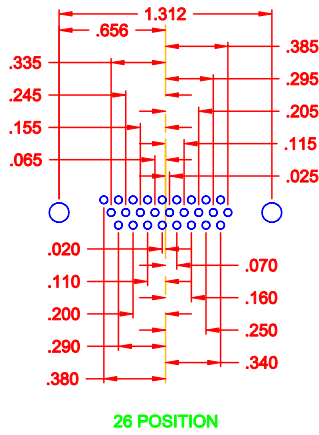
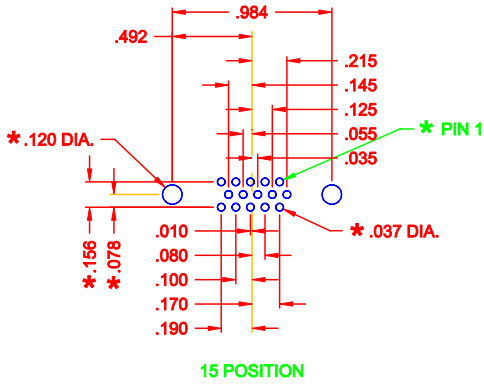
- CURRENT RATING: 2 AMPS
- WITHSTANDING VOLTAGE: 1,000VAC AT SEA LEVEL
- CONTACT RESISTANCE: 10 mOhms Max.
- INSULATION RESISTANCE: 5,000 MOhms min.
- VOLTAGE: 500VAC FOR 1 MINUTE
- TEMPERATURE: -55° C TO +125° C

DO NOT SCALE FROM DRAWING

	THESE DRAWINGS AND SPECIFICATIONS ARE THE PROPERTY OF NorComp AND SHALL NOT BE REPRODUCED, COPIED OR USED AS THE BASIS FOR THE MANUFACTURE OF SALE OF APPARATUS WITHOUT WRITTEN PERMISSION.	DRAWN: PAM JENKINS CHECKED:	DATE: 09-12-05 DATE:
		SCALE: 1:1 DWG NO.	SHEET 1 OF 3

RoHS COMPLIANT


DESCRIPTION: PCB LAYOUT - H.D. VERTICAL - FEMALE



HIGH DENSITY VERTICAL

* TYP. ON ALL SIZES

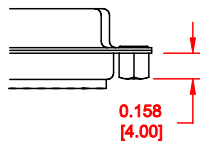
DO NOT SCALE FROM DRAWING

	THESE DRAWINGS AND SPECIFICATIONS ARE THE PROPERTY OF NorComp AND SHALL NOT BE REPRODUCED, COPIED OR USED AS THE BASIS FOR THE MANUFACTURE OF SALE OF APPARATUS WITHOUT WRITTEN PERMISSION.		DRAWN: C. SMITH	DATE: 03-09-06
			CHECKED:	DATE:
NorComp		SCALE: FULL	SHEET 2 OF 3	REV 3
		DWG NO. 195-YYY-213LYY1		

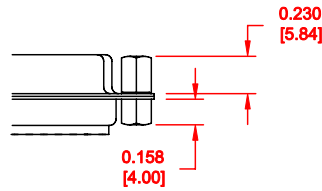
DESCRIPTION: HARDWARE

TOLERANCE:
ALL DIMENSIONS ARE ± 0.010

55X 0.158" (BOARD SIDE)




03X 0.158" (BOARD SIDE) - 0.230" MATING SIDE



DO NOT SCALE FROM DRAWING

RoHS COMPLIANT

	THESE DRAWINGS AND SPECIFICATIONS ARE THE PROPERTY OF NorComp AND SHALL NOT BE REPRODUCED, COPIED OR USED AS THE BASIS FOR THE MANUFACTURE OF SALE OF APPARATUS WITHOUT WRITTEN PERMISSION.	DRAWN:	C. SMITH	DATE:	12-21-09
		CHECKED:		DATE:	
NorComp	SCALE:	SHEET	OF	REV	
		3	3	3	
DWG. NO.		195-YYY-213LYY1			