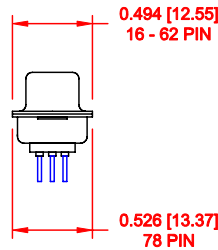
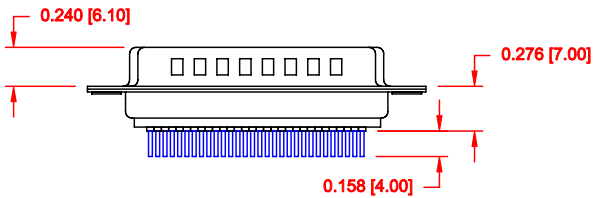
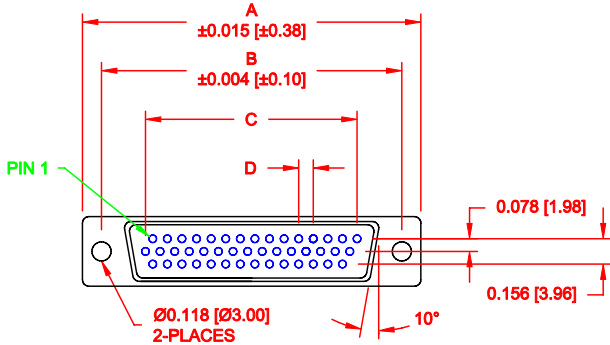


DESCRIPTION: HIGH DENSITY MALE - VERTICAL DIP - LOW PROFILE - STAMPED

44 PIN SHOWN



MATERIAL:

SHELL: STEEL, NICKEL PLATED
 INSULATOR: PBT, UL 94V-O RATED, 230°C PROCESS TEMP
 CHEMICAL RESISTANCE, BLACK
 CONTACT: BRASS, GOLD FLASH IN MATING AREA
 TIN PLATING ON TAIL ENDS

ELECTRICAL:

CURRENT RATING: 2 AMPS
 WITHSTANDING VOLTAGE: 1,000VAC AT SEA LEVEL
 CONTACT RESISTANCE: 10 mOhms Max.
 INSULATION RESISTANCE: 5,000 MOhms min.
 VOLTAGE: 500VAC FOR 1 MINUTE
 TEMPERATURE: -55° C TO +125° C

RoHS COMPLIANT

No. OF PINS	DIMENSIONS			
	A	B	C	D
15	1.214	0.984	0.405	0.090
26	30.80	24.99	10.29	2.29
44	2.088	1.852	1.305	0.090
62	53.04	47.04	33.15	2.29
78	2.730	2.500	1.948	0.095
	69.34	63.50	49.47	2.41
4 ROWS	2.635	2.406	1.805	0.095
	66.93	61.11	45.85	2.41

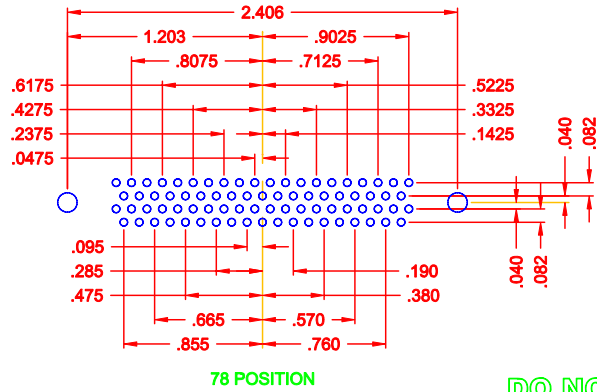
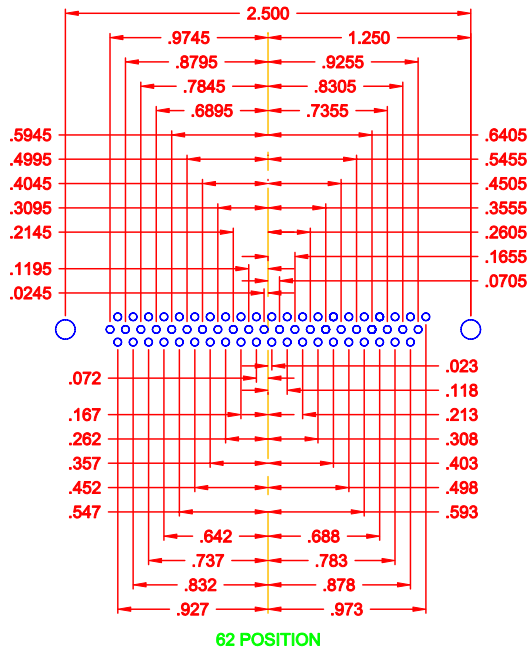
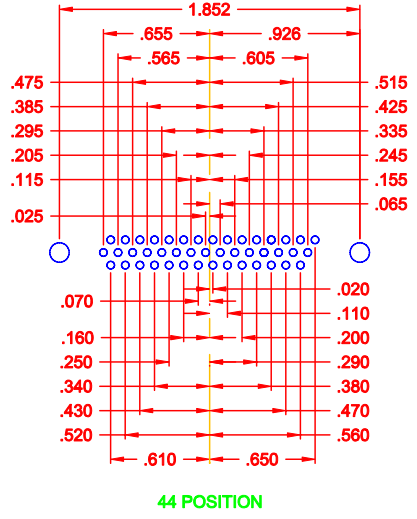
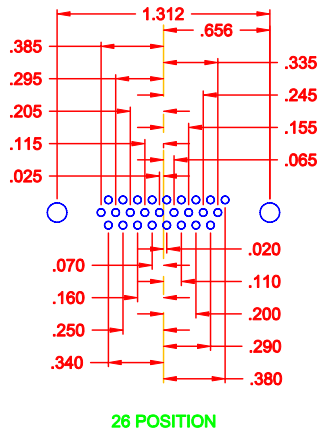
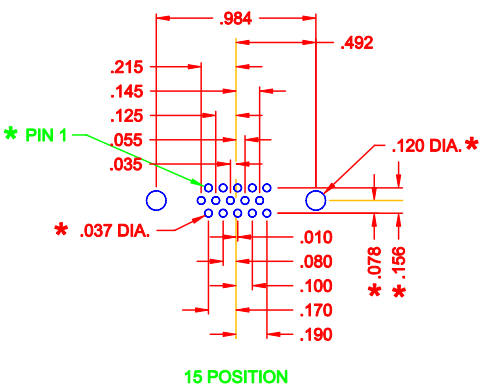
195-YYY-1 1 3 L YY 1

SERIES POSITIONS
 015
 026
 044
 062
 078
 GENDER
 1 = MALE
 TERMINATION
 1 = PC MOUNT
 SHELL PLATING
 3 = NICKEL (GROUND INDENTS)
 RoHS COMPLIANT
 LOW PROCESS TEMP. - 230°C
 HARDWARE OPTIONS
 00 = NO HARDWARE
 03 = 4-40 HEX STANDOFFS
 55 = 4-40 INSERTS
 PLATING OPTIONS
 1 = GOLD FLASH

DO NOT SCALE FROM DRAWING

	THESE DRAWINGS AND SPECIFICATIONS ARE THE PROPERTY OF NorComp AND SHALL NOT BE REPRODUCED, COPIED OR USED AS THE BASIS FOR THE MANUFACTURE OF SALE OF APPARATUS WITHOUT WRITTEN PERMISSION.	DRAWN: PAM JENKINS CHECKED:	DATE: 09-12-05 DATE:
	NorComp	SCALE: 1:1 DWG NO.	SHEET 1 OF 3


DESCRIPTION: PCB LAYOUT - H.D. VERTICAL - MALE



HIGH DENSITY VERTICAL

* TYP. ON ALL SIZES

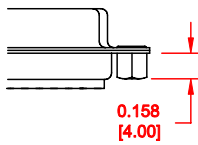
DO NOT SCALE FROM DRAWING

	THESE DRAWINGS AND SPECIFICATIONS ARE THE PROPERTY OF NorComp AND SHALL NOT BE REPRODUCED, COPIED OR USED AS THE BASIS FOR THE MANUFACTURE OF SALE OF APPARATUS WITHOUT WRITTEN PERMISSION.		DRAWN: C. SMITH	DATE: 03-09-06
			CHECKED:	DATE:
<h1>NorComp</h1>	SCALE: FULL	SHEET 2 OF 3	REV 3	
	DWG NO. 195-YYY-113LYY1			

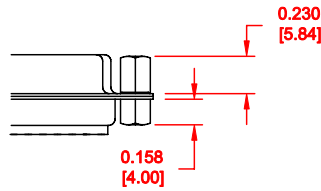
DESCRIPTION: HARDWARE

TOLERANCE:
ALL DIMENSIONS ARE ± 0.010

55X 0.158" (BOARD SIDE)




03X 0.158" (BOARD SIDE) - 0.230" MATING SIDE



DO NOT SCALE FROM DRAWING

RoHS COMPLIANT

	THESE DRAWINGS AND SPECIFICATIONS ARE THE PROPERTY OF NorComp AND SHALL NOT BE REPRODUCED, COPIED OR USED AS THE BASIS FOR THE MANUFACTURE OF SALE OF APPARATUS WITHOUT WRITTEN PERMISSION.	DRAWN:	C. SMITH	DATE:	12-21-09
		CHECKED:		DATE:	
NorComp	SCALE:	SHEET	OF	REV	
		3	3	3	
	DWG NO.	195-YYY-113LYY1			